

Inastyl®

Inastyl® is a roof decking profile specifically dedicated to the iNovaPV Lite integration process.

Inastyl® was developed to take into account the punctual loads generated by the iNovaPV Lite integration process with our Inastyl® 46, Inastyl® 56, Inastyl® 74 and Inastyl® 133 profiles.

The consideration of these punctual loads has led us to develop a new methodology for sizing our Inastyl® deck profile.

This process has been favorably evaluated through our different technical files presented to the experts of both the building authorities and control offices.

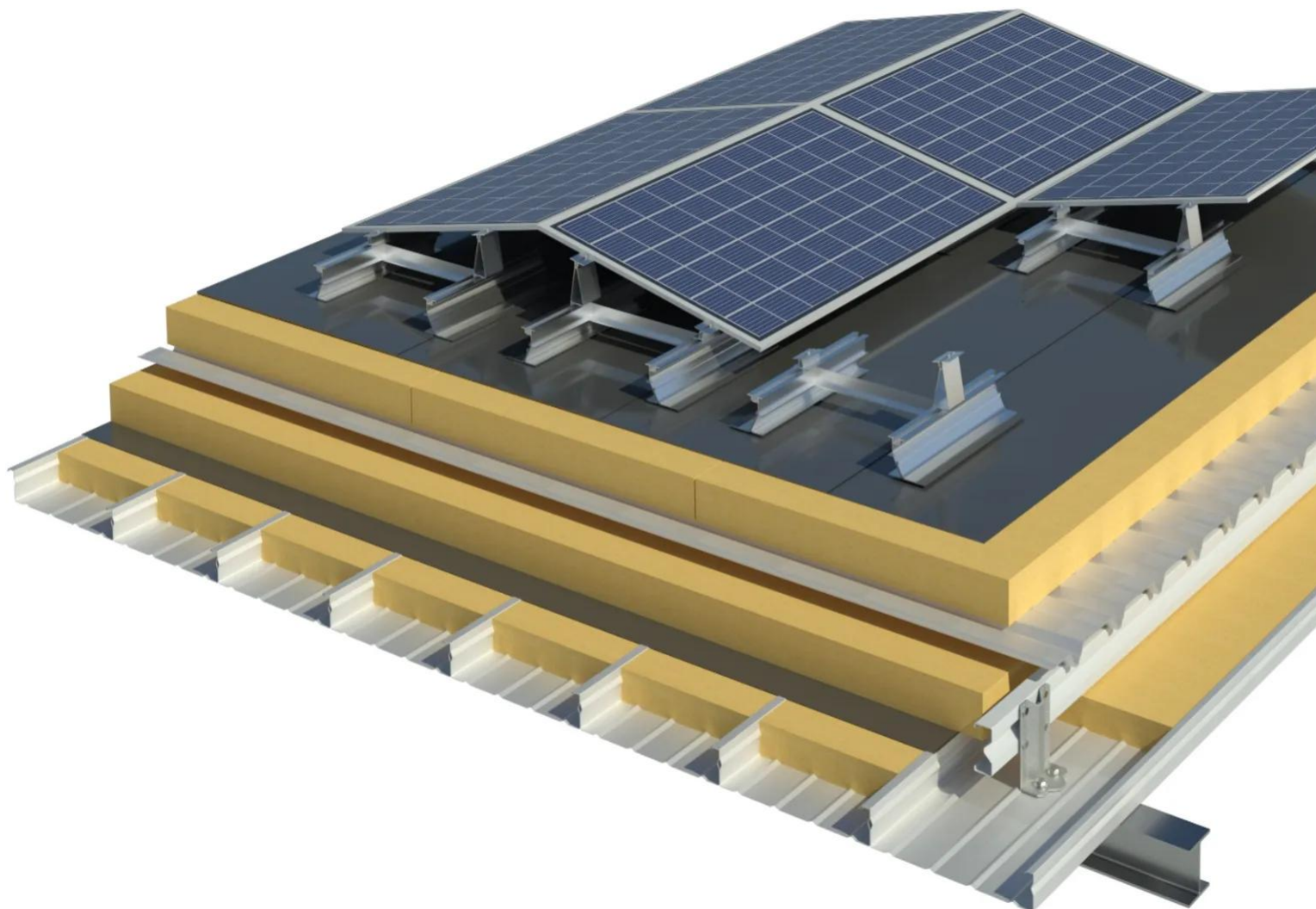
The iNovaPV Lite system:

- Is a mounting system for framed photovoltaic panels consisting of ½ rails of 400 or 580 mm in length
- Is thermo-welded, it does not require ballasting or perforation of the waterproofing membrane
- Composed of bitumen and synthetic PVC or FPO membranes
- Type of supports: concrete with insert, wood or steel
- Is intended for new projects
- For tertiary, industrial and collective buildings

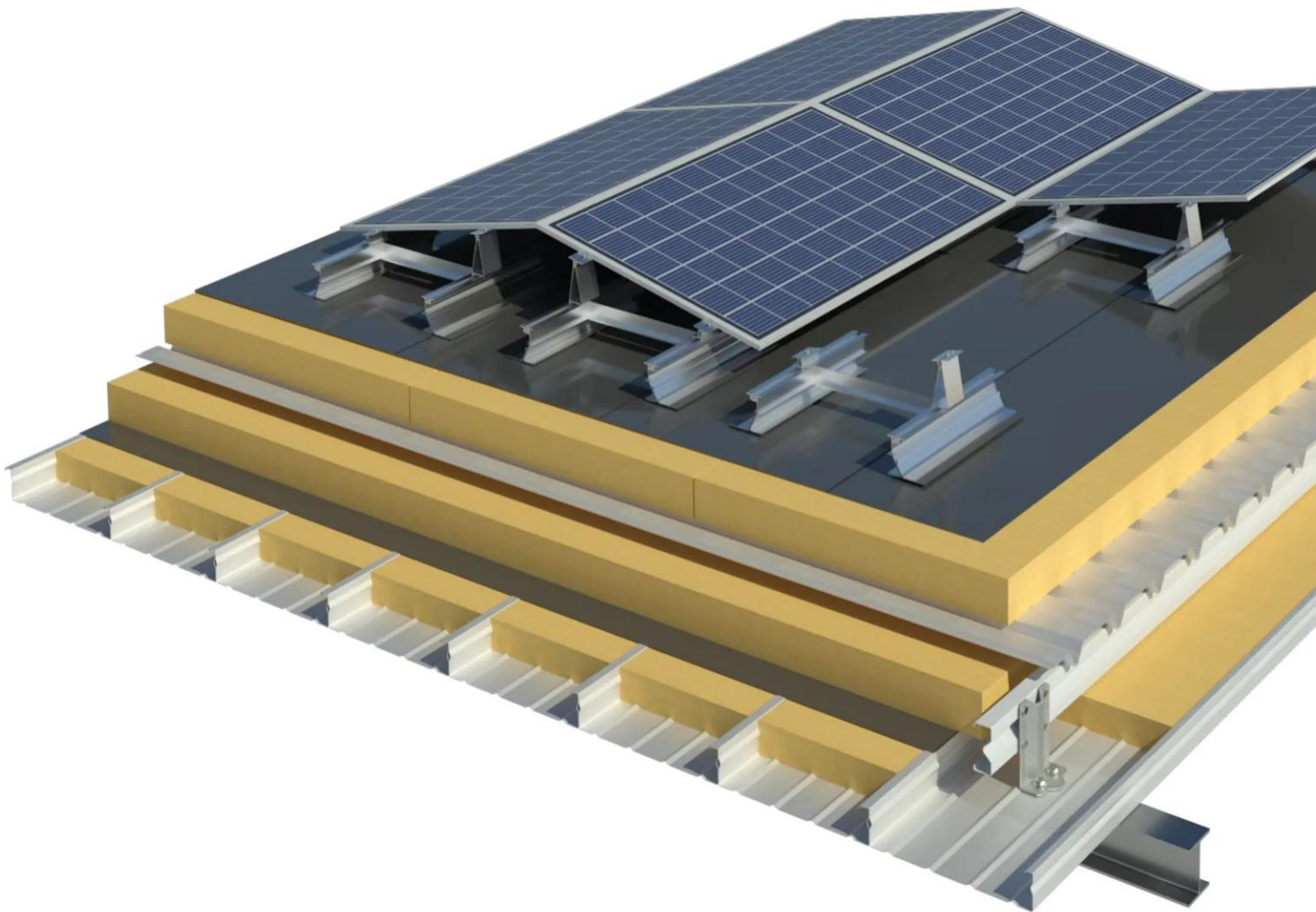
[Contact us](#)



•



•





Properties

Accessories

[Request informations](#)

Related products

[Request informations](#)

Technical documents

[Request informations](#)

Technical & commercial documentation

[Request informations](#)