

Soprastyl is a roof decking profile specifically validated for SOPRASOLAR FIX EVO system.  
SOPRASOLAR FIX EVO is a no-drill photovoltaic waterproofing process for flat roofs with the installation of inclined photovoltaic modules (portrait or landscape) on a patented stud system with integrated extensions.  
SOPRASOLAR FIX EVO allows the integration of rigid photovoltaic modules on a set of polymer studs connected to a self-protecting waterproofing coating on insulated/sealed roofs of new buildings without having to perforate the latter and without the need to add ballast in order to create installations that produce renewable solar electricity.

About the Soprasolar Fix Evo system:

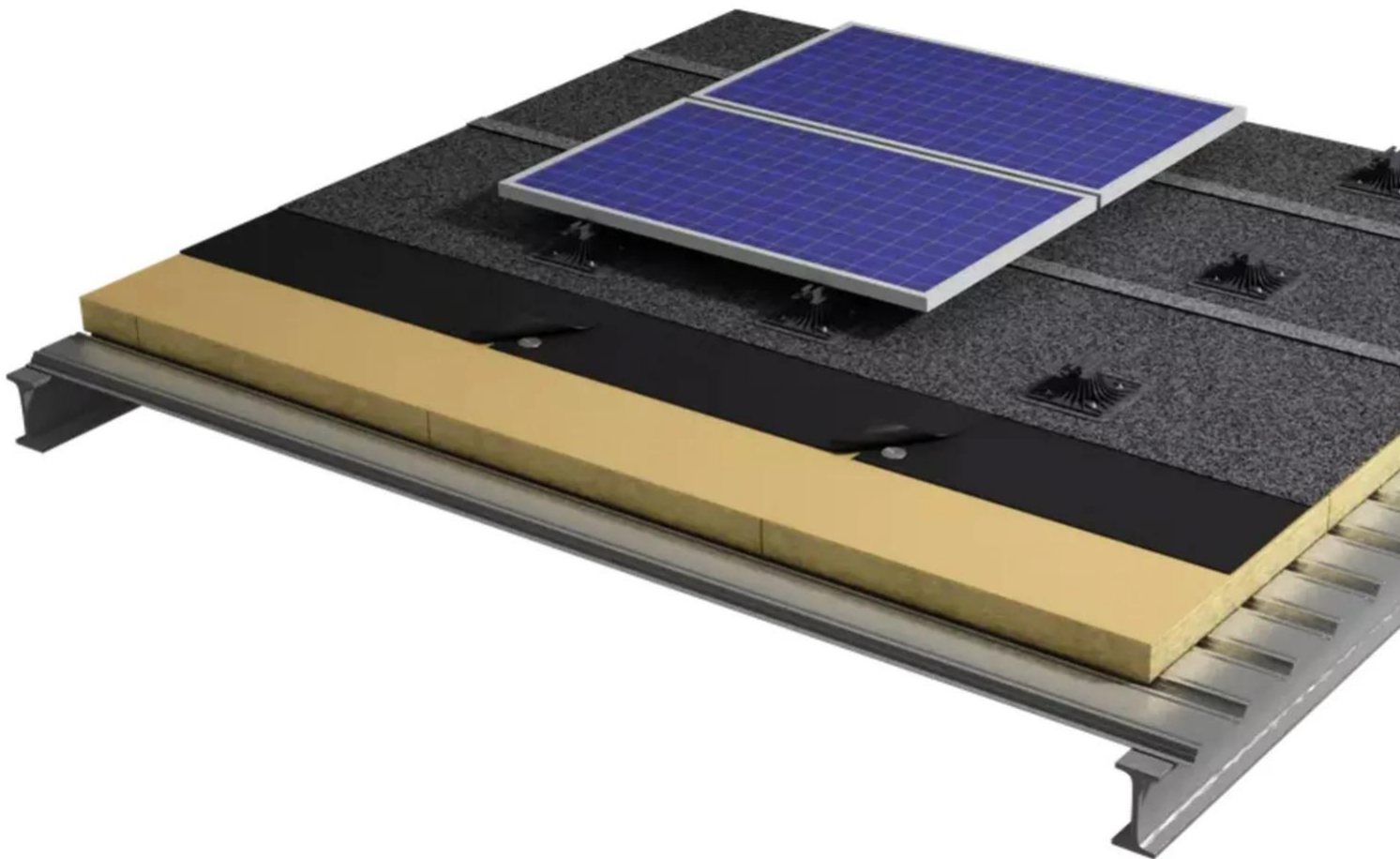
- Ready to install
- No rails/accessories
- No drilling or ballasting
- 10° tilt for the panel
- Easy to install and maintain + Height adjustable studs
- Numerous tests carried out by external laboratories
- No thermal bridges
- On adherent or semi-independent waterproofing
- Installation without drilling by welding
- On minimum class C insulation
- Admissible with no slope and higher (limited to 10%)
- Minimum module ventilation of 120 mm
- Weight of the complex: approximately 14 kg/m<sup>2</sup> (excluding insulation and waterproofing membranes).
- All types of atmosphere (including seafront)

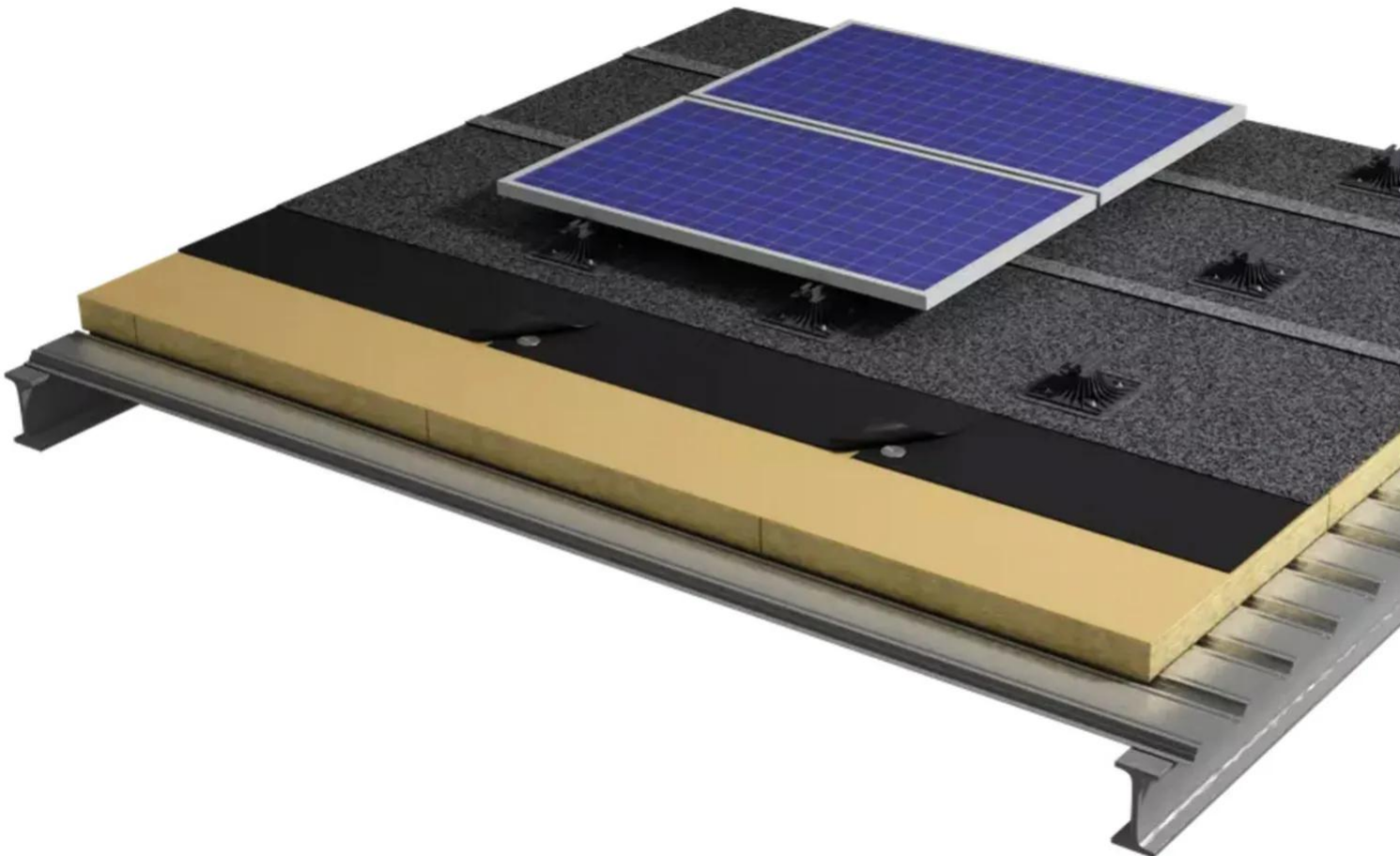
[Contact us](#)



•

•







## Properties

## Accessories

[Request informations](#)

## Related products

[Request informations](#)

## Technical documents

[Request informations](#)

## Technical & commercial documentation

[Request informations](#)

## Related projects

[test](#)



**[Kerloges shopping center - Chantepie](#)**

[France](#)

[Chantepie](#)

[White 912](#)

[Intérieur](#)