

Eklips A

The Eklips A 39 and Eklips A 45 profiles are suitable for use with Adiwatt's Prima and Optima mounting systems for optimal installation of framed photovoltaic modules in landscape mode.

Eklips®, Optima & Prima solutions are designed and manufactured in France.

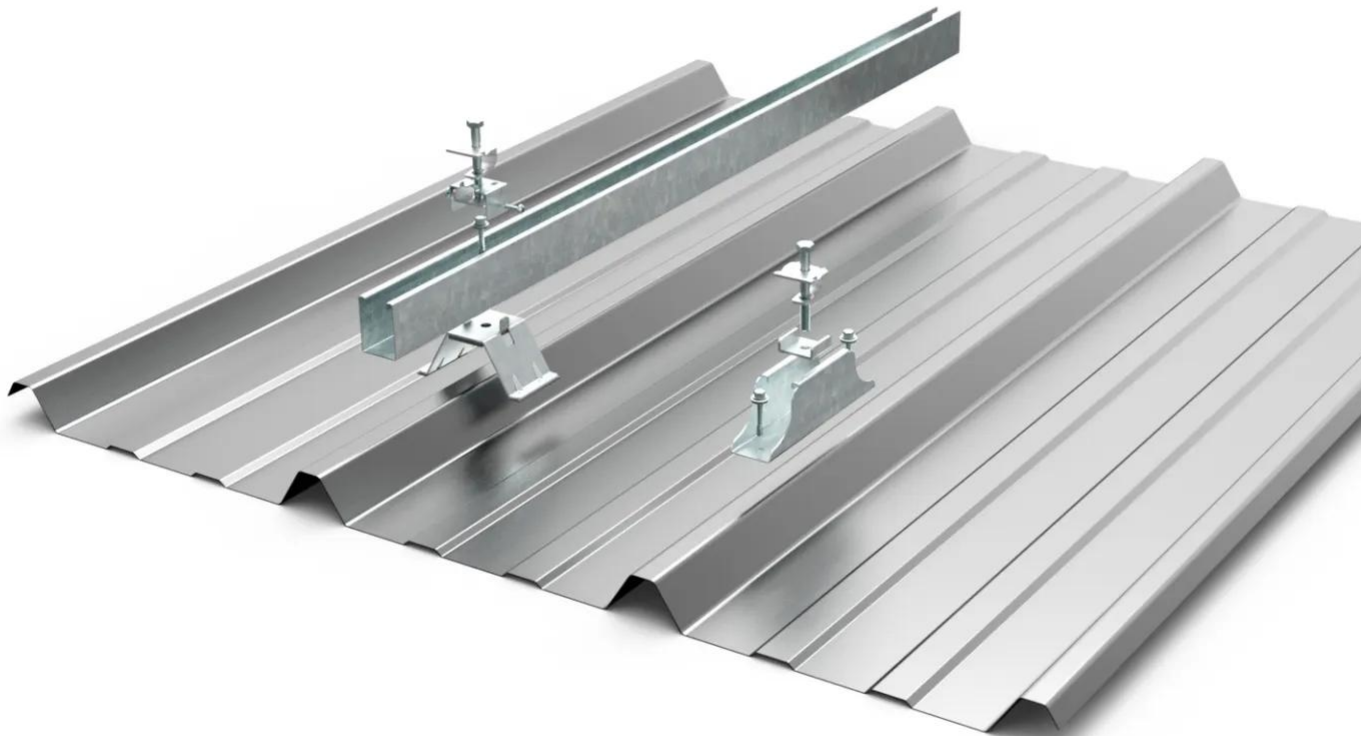
About Optima:

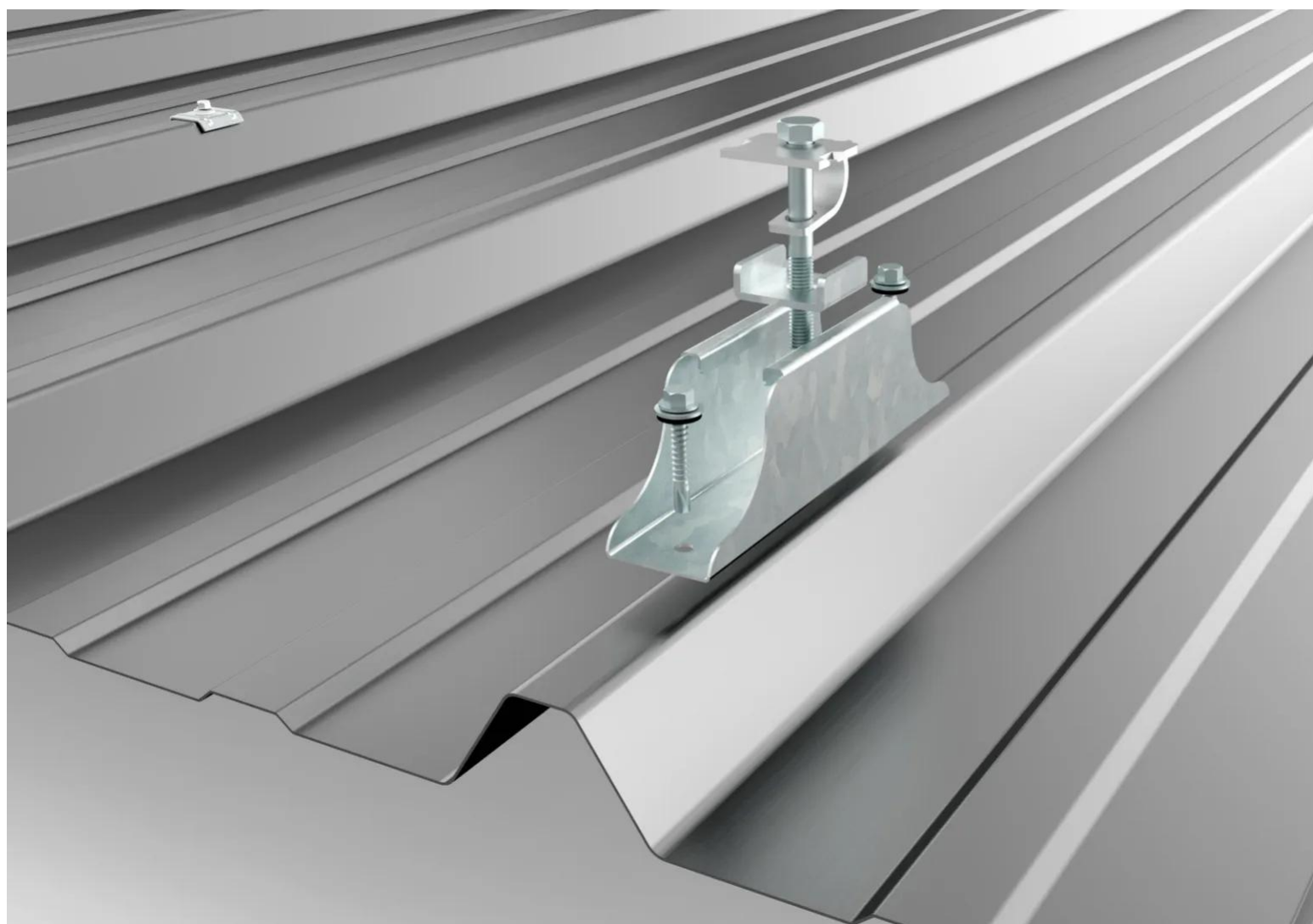
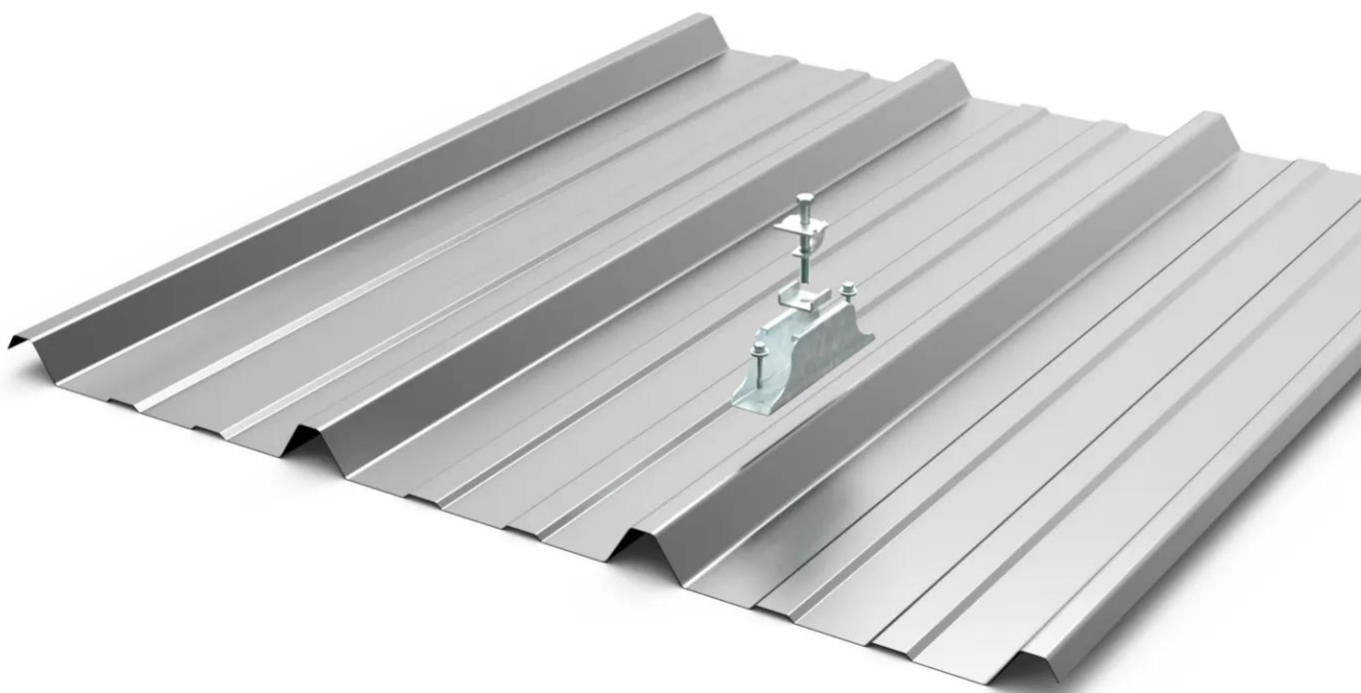
- The Optima system is directly attached to the roof structure, so no stress is applied to the roof
- No differential expansion between the bridge, the rail and the Eklips A profiles thanks to the use of steel
- The system is made entirely of corrosion-resistant Magnelis® or Z600 steel
- The design of the system allows for purlin attachment and is suitable for the photovoltaic modules listed in the technical certification (ETN)
- Optima system's bridge with its waterproofing gasket adapts to Eklips A 39 and Eklips A 45 profiles and is fixed in place of the existing jumper
- Optima provides 9.6 cm of ventilation under the modules and ensures excellent productivity and a longer lifespan of the photovoltaic modules
- A 3rd rail per module can be added in order to increase the distance between panels, upon validation by Adiwatt's technical teams

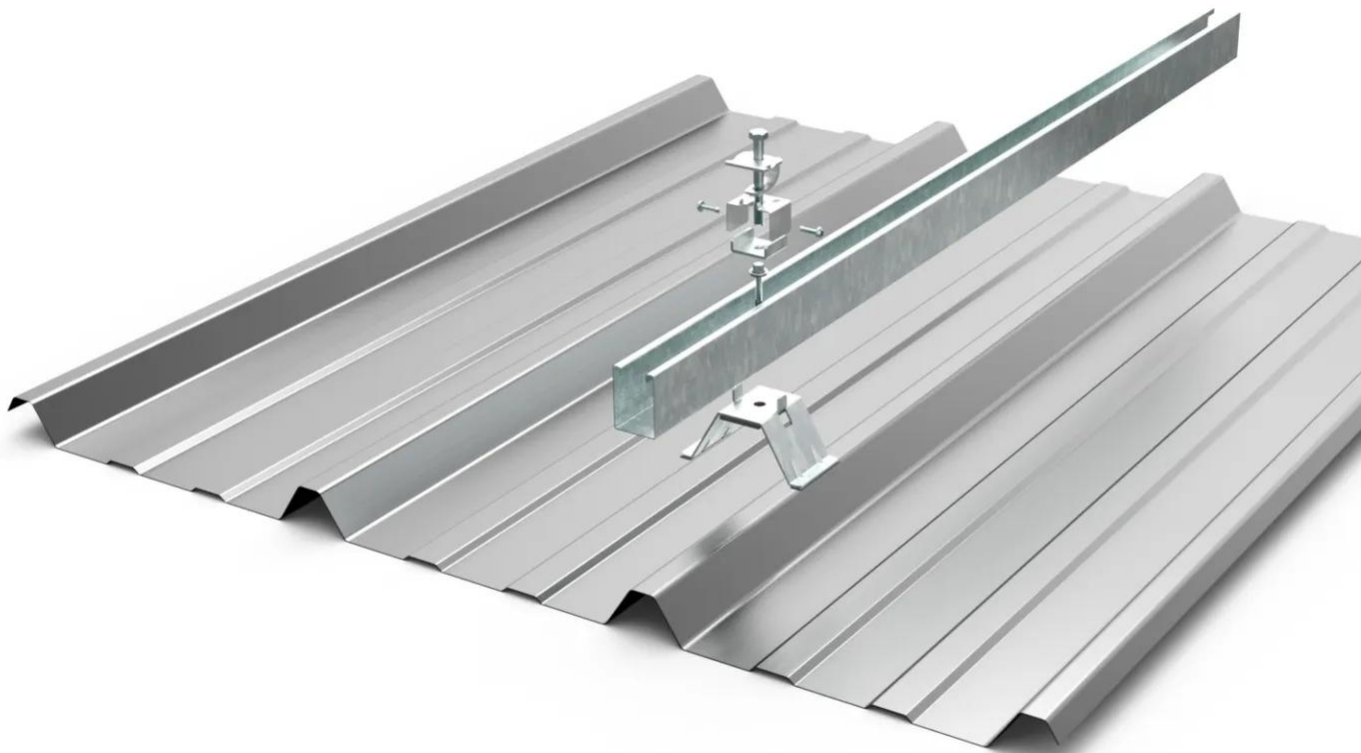
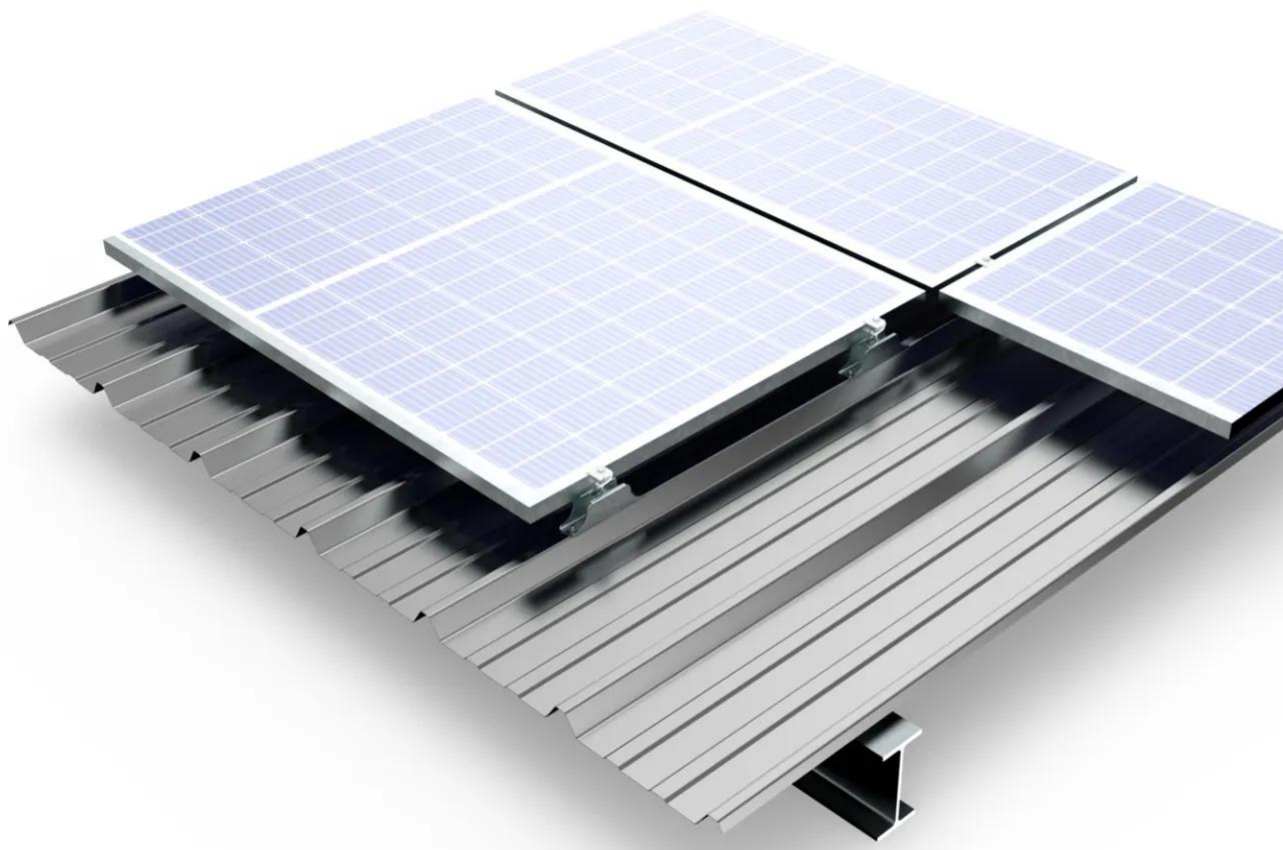
About Prima:

- Prima rail is made of Magnelis® steel, resistant to corrosion
- No differential expansion between the rail and the Eklips® A profiles
- The Prima® system is easily and safely installed using self-drilling screws
- The fastening system reduces assembly work for faster installation by one person
- Pre-drilled, one-size-fits-all packaging ensures optimized and simplified logistics
- Easy and cost-effective grounding directly to the rail using the fasteners
- Prima offers a 9.6 cm waterproofing and ventilation under the modules for better productivity and lifetime of the modules
- Certification for the Prima® system with our Eklips® A profiles

[Contact us](#)

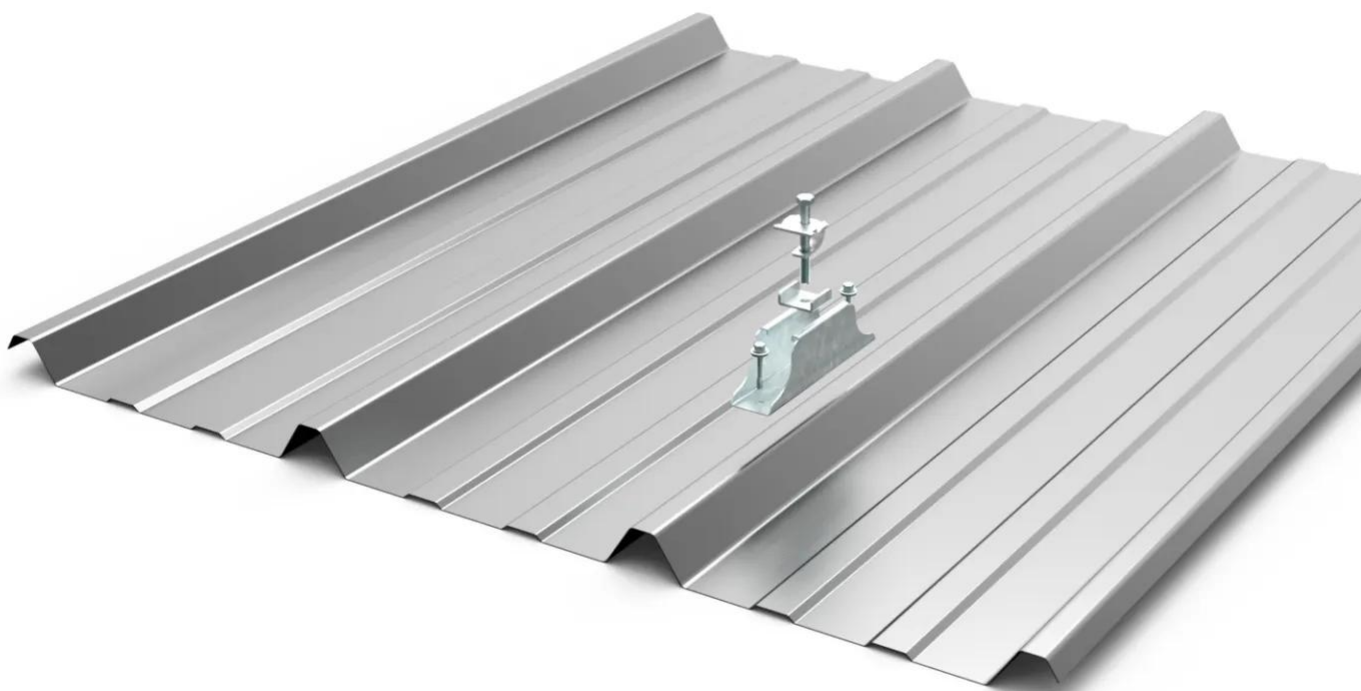
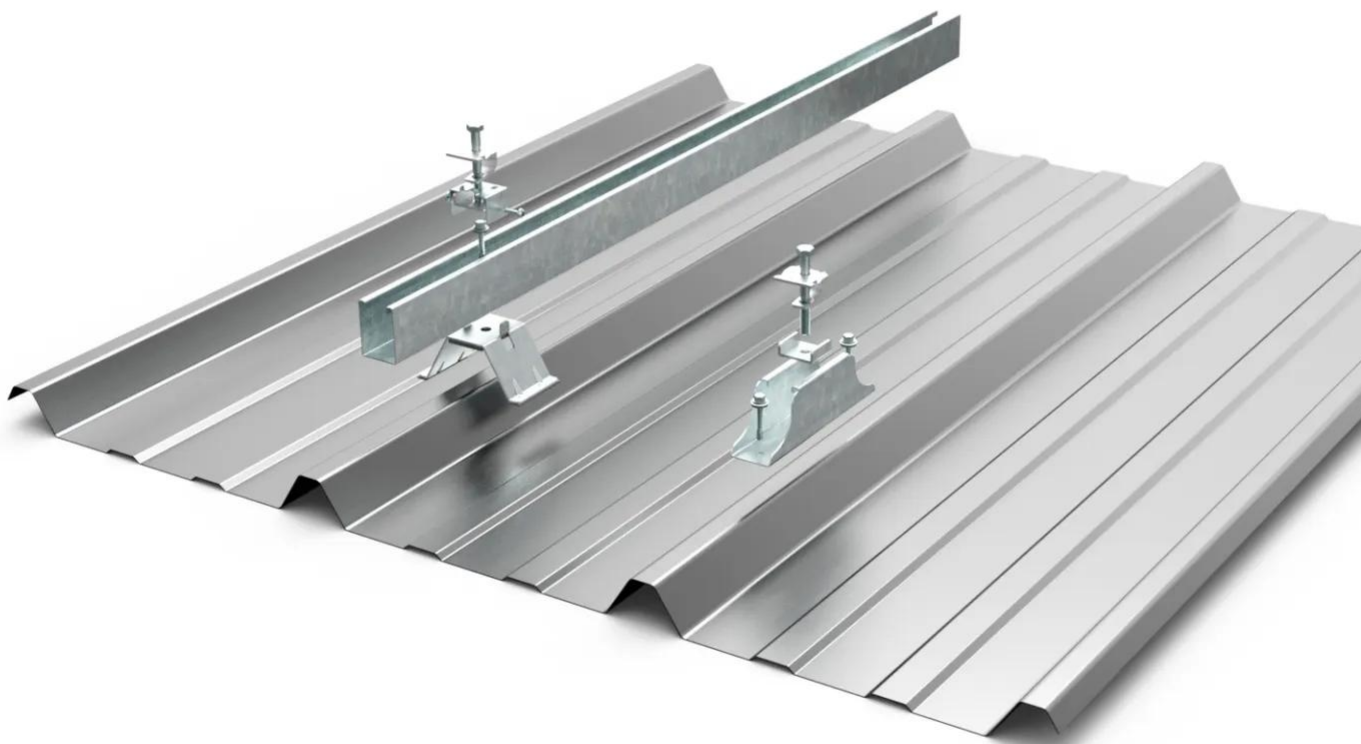


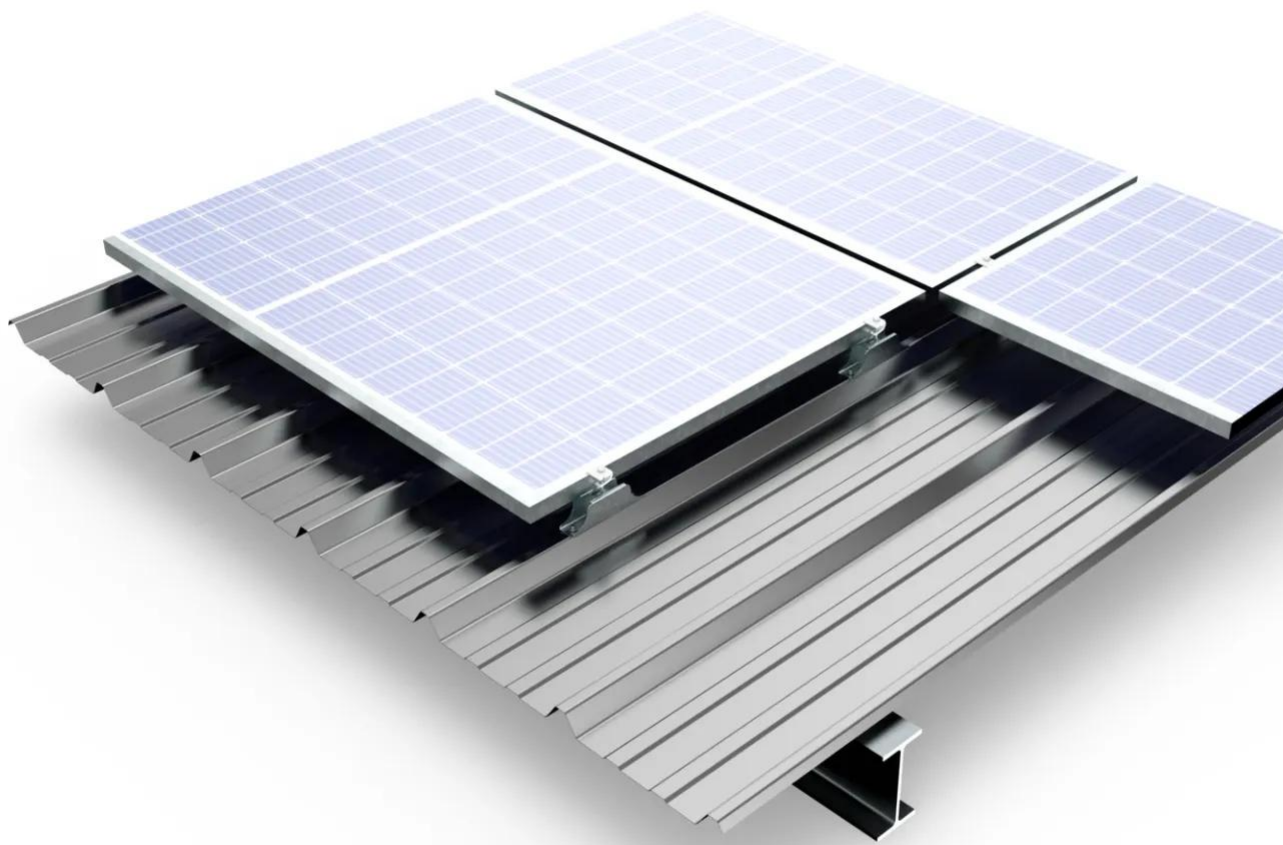
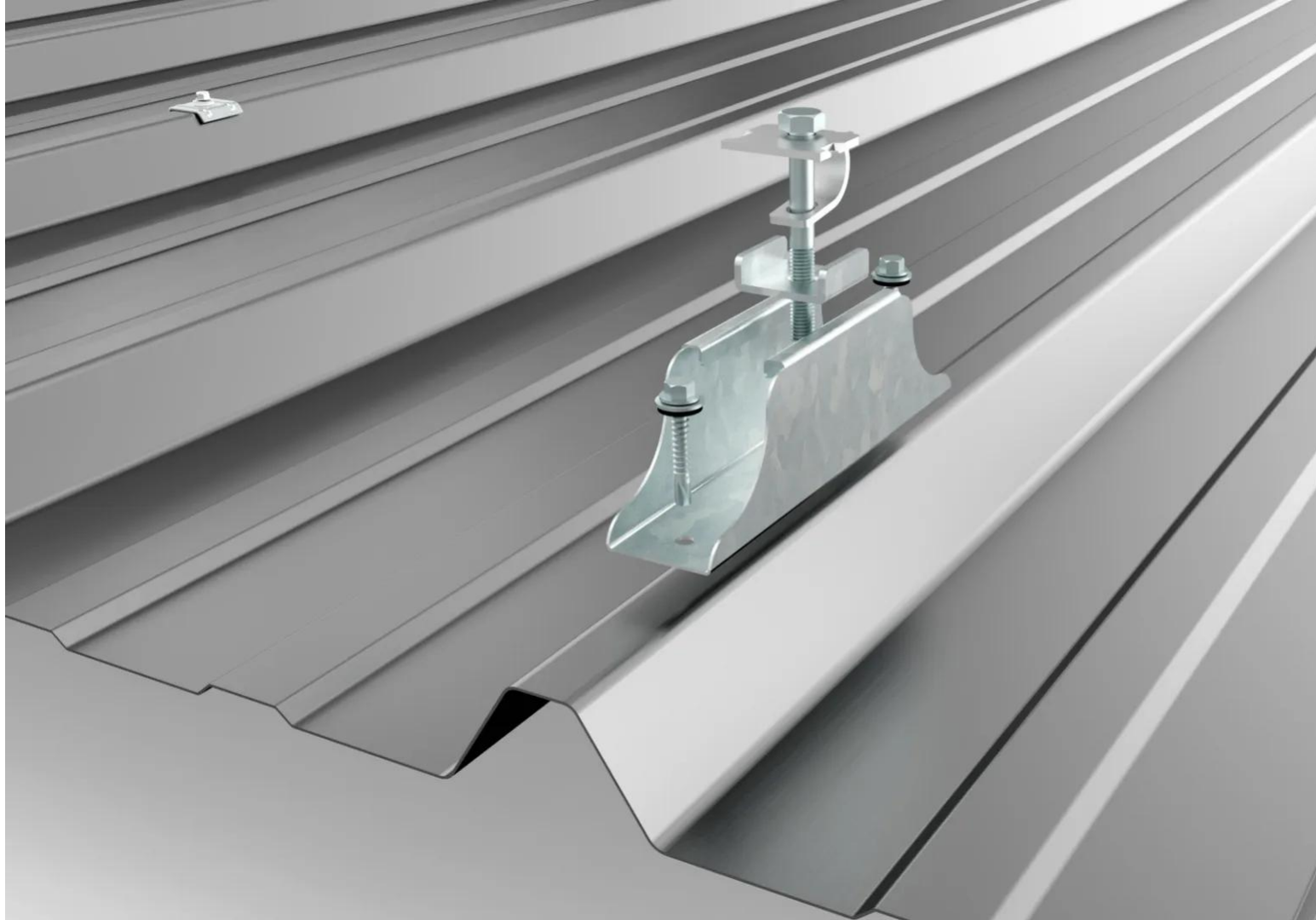


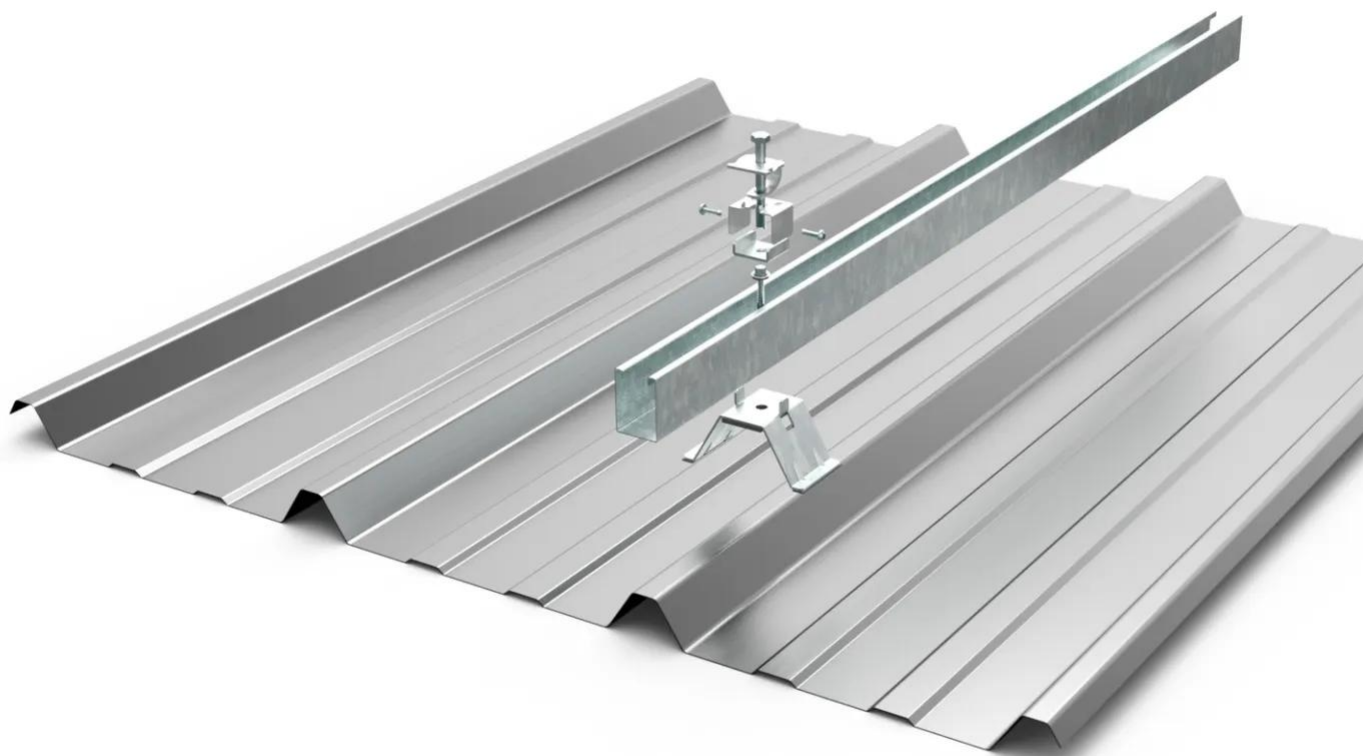


Eklips A Optima Clamp

- Eklips A Optima System







• Eklips A Optima Clamp

Properties

Accessories

[Request informations](#)

Related products

[Request informations](#)

Technical documents

[Request informations](#)

Technical & commercial documentation

[Request informations](#)