

D2B® Promisol®

Unique concept of prefabricated facades, D2B® (Designed to Build) Promisol® is a waterproof curtain wall constructive system that combines pre-assembled high performance insulating sandwich panels with an innovative mounting system and external facing in ribbed, micro-ribbed, smooth or linea finish, in the full range of colors [Colorissime®](#). D2B® Promisol® is compatible with a choice of aluminum, wood and PVC joinery both in interior wall installation and in tunnel.

Thanks to its dry and lightweight design, D2B® Promisol® allows quick and easy installation, which improves on-site safety and the quality of off-site construction.

D2B® Promisol® consists of [Promisol® S](#) panels in vertical installation, ensuring both external skin and insulation roles.

- Maximum length: 12 000 mm
- Standard height: 2 700 mm
- Acermi certified PIR foam insulation
- Thermal Resistance of the constructive system up to 7.41 m².K /W (U = 0.135 W/m².K)
- Air permeability: Class A4 (EN 12152)
- Water tightness: Class R6 (EN 12154)
- Shock resistance: M 50/900 J

D2B® Promisol® complies with current building and fire safety regulations and can be used in several locations and buildings where the floor of the highest level is less than 28m, such as:

- Individual and collective housing
- Public Access Buildings (ERP) for up to 1 500 occupants
- Office and commercial buildings
- Constructions in several seismic zones and soil classes
- Wind loads : adaptable to constructions in several regions and terrain's roughness
- Discover D2B® Promisol® [in video](#).

For different project configurations and further information, [contact us](#).

[Contact us](#)

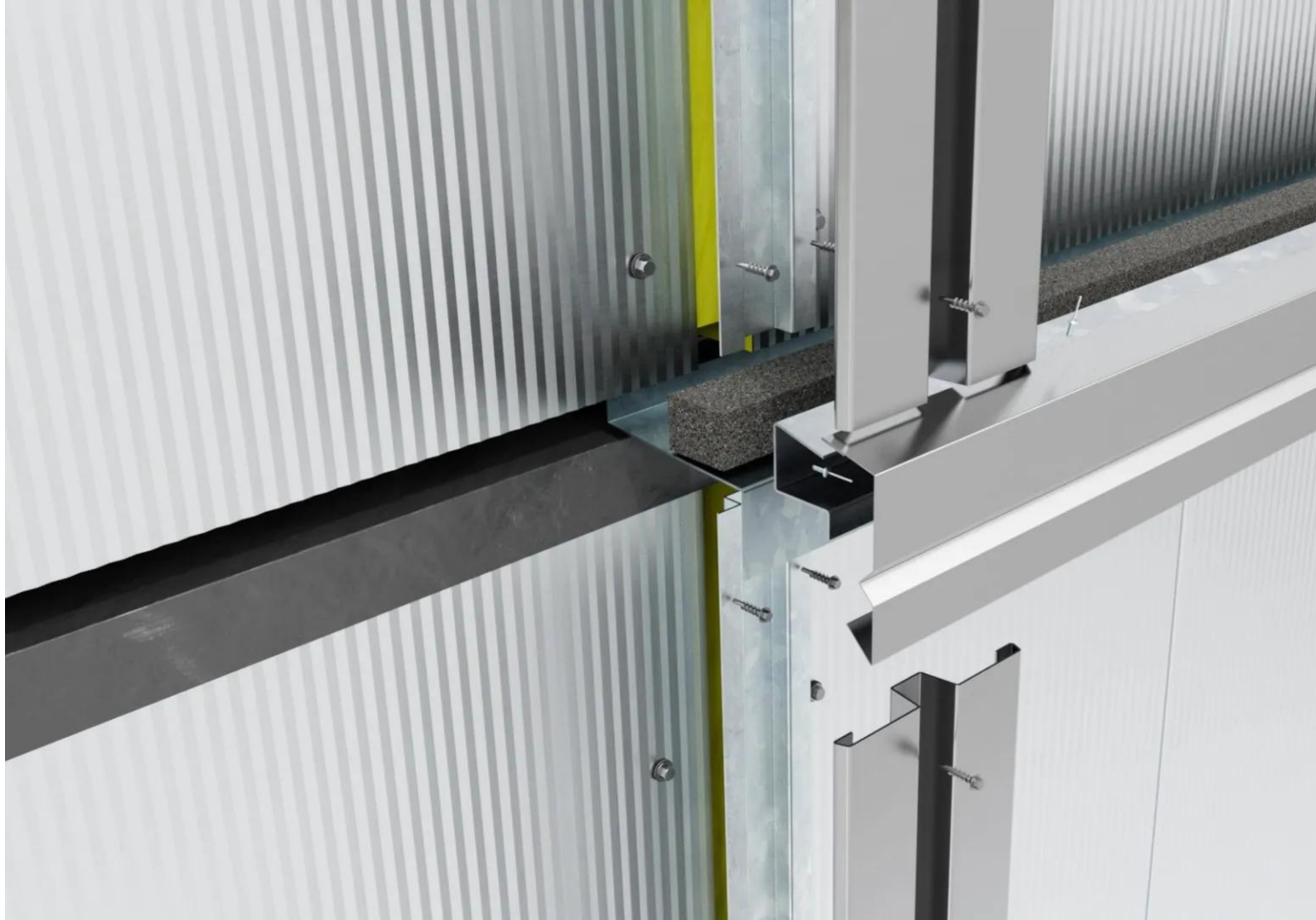


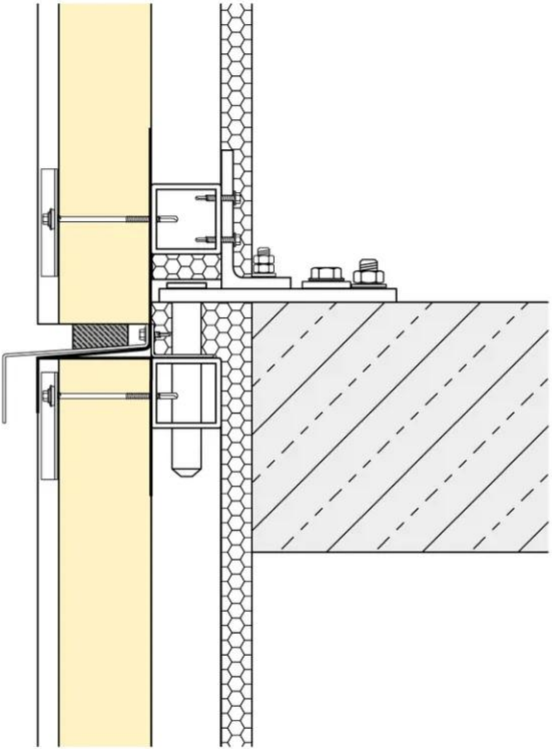
•



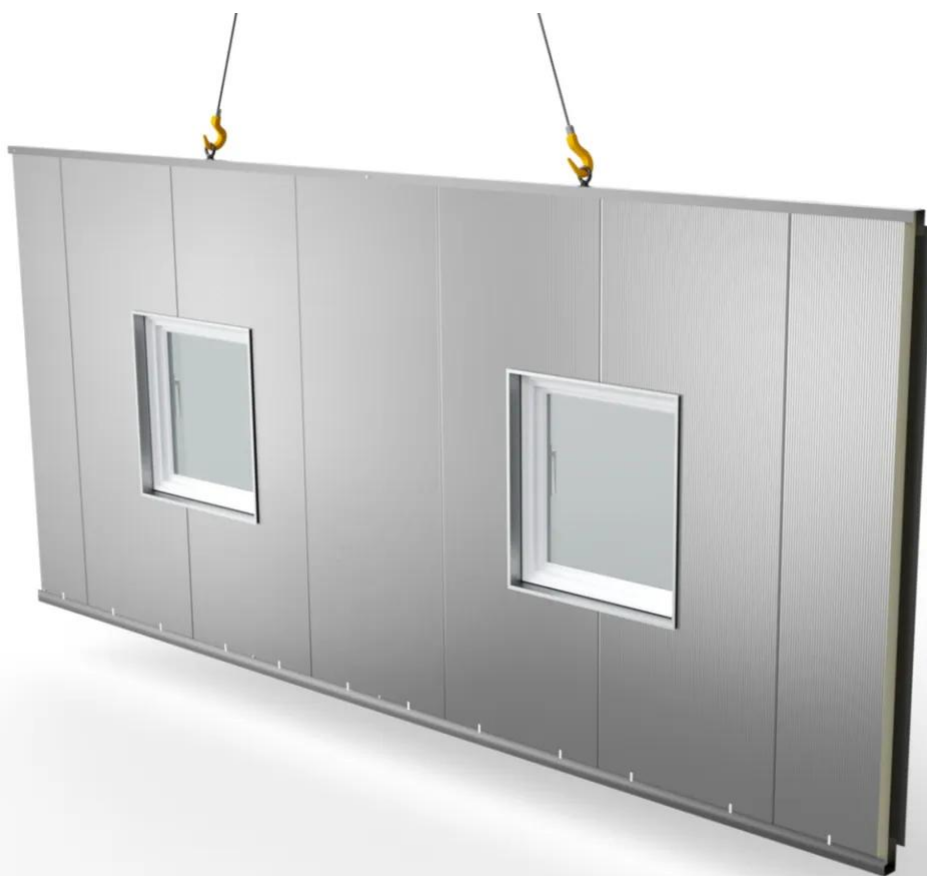
•

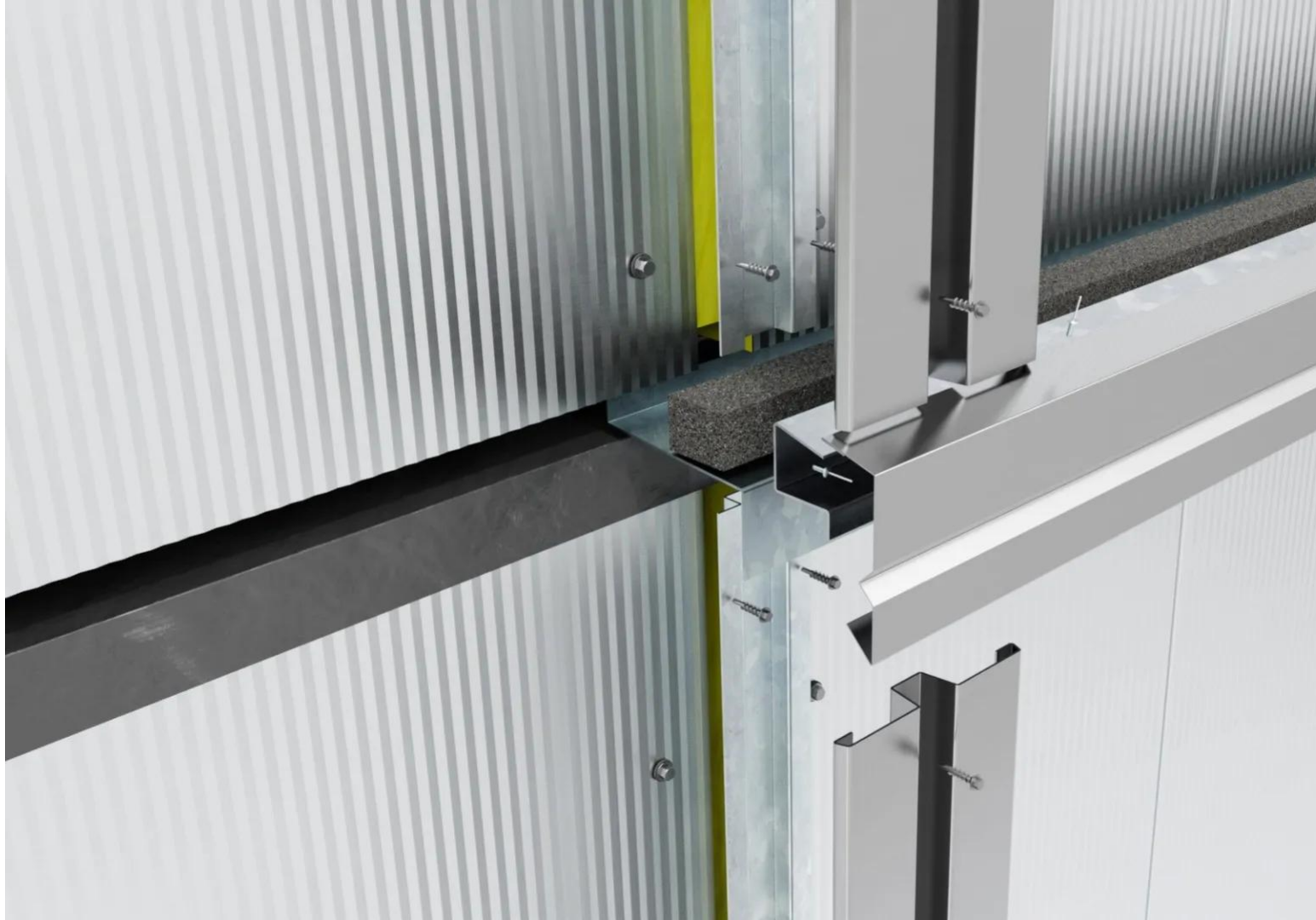


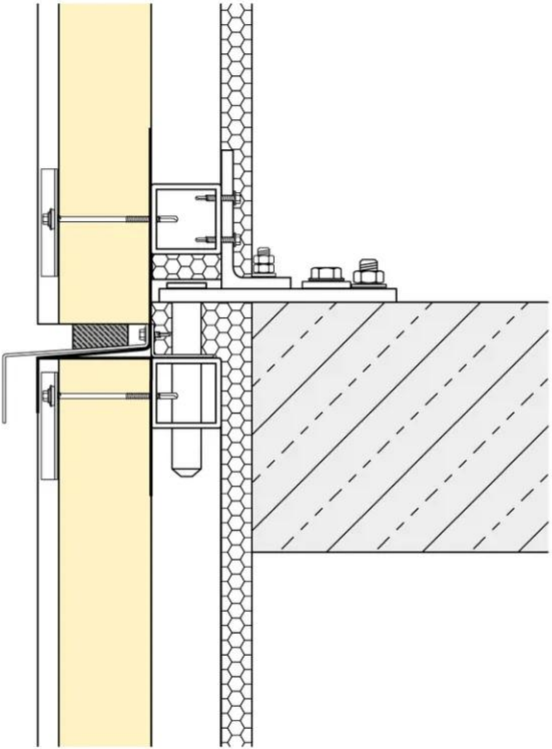


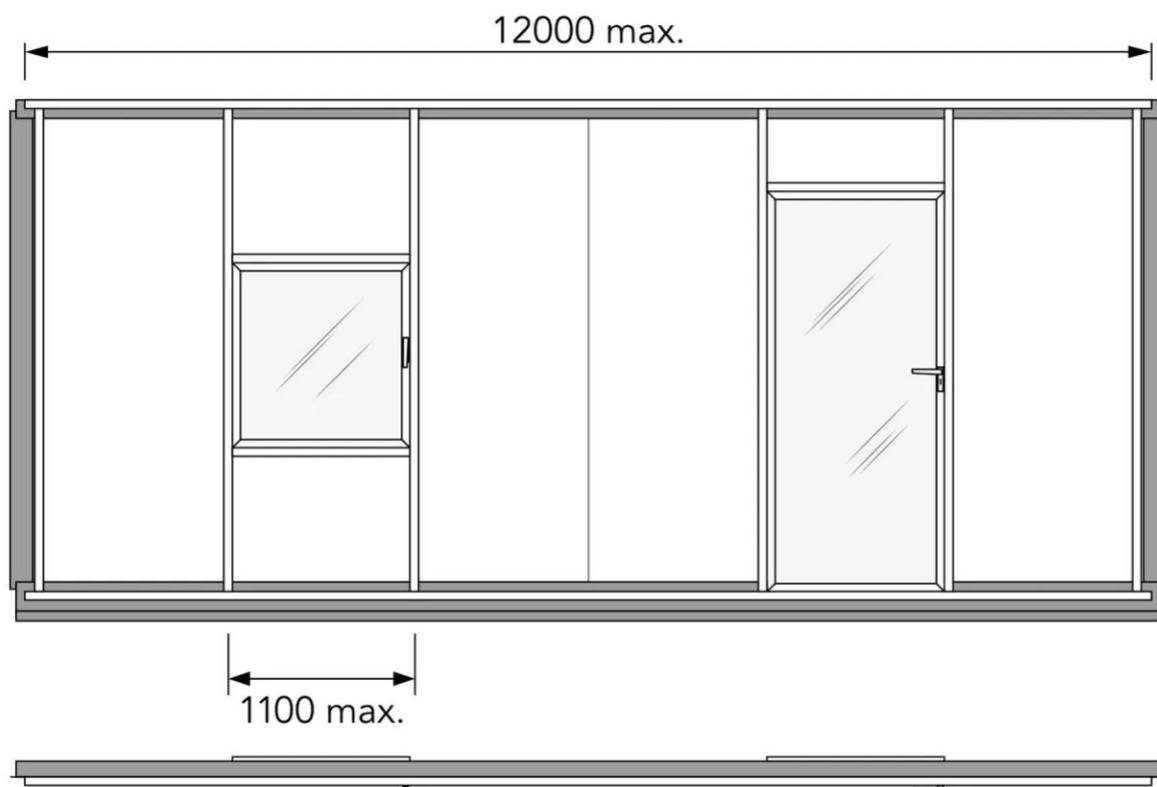












Properties

Accessories

[Request informations](#)

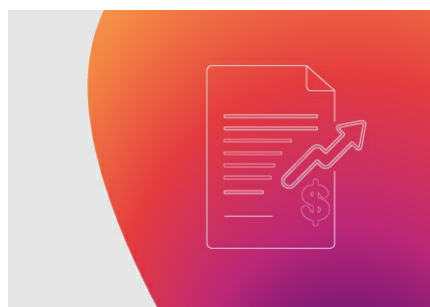
Related products

[Request informations](#)

Technical documents

[Request informations](#)

Technical & commercial documentation



D2B® Brochure

[View document](#)

Related projects



Pierre and Marie Curie College - Héricourt

[Public](#)

[France](#)

[Héricourt](#)

[79SB Swan](#)

[Irysa®](#)