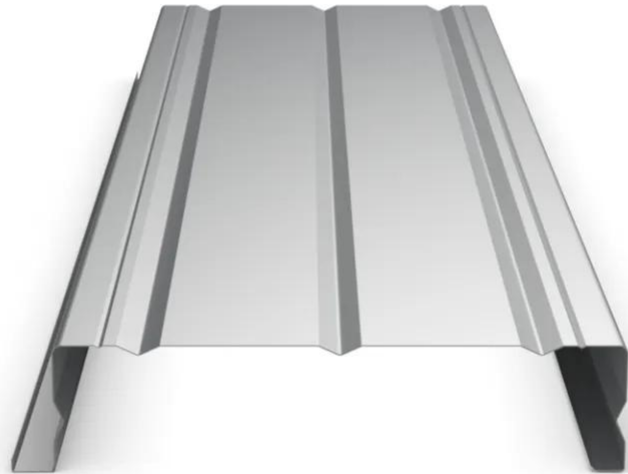


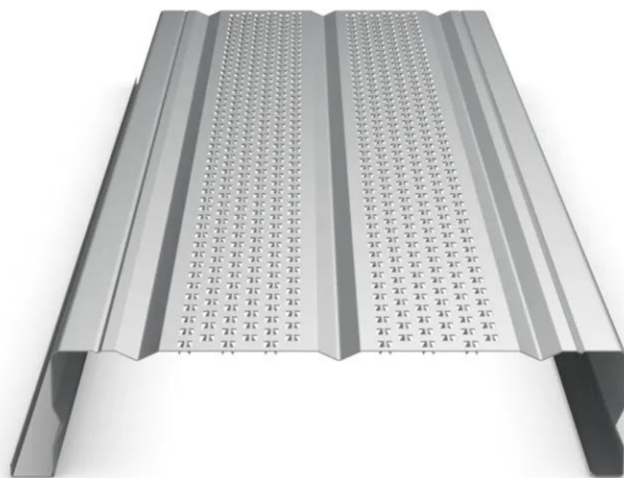
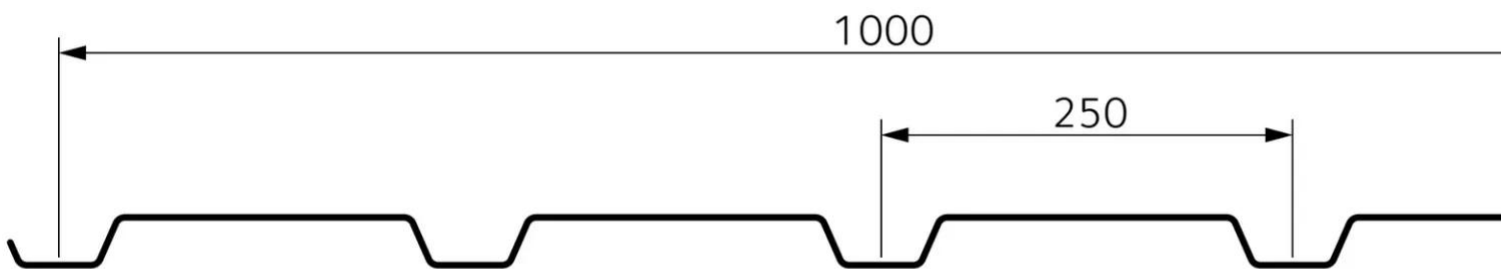
## Supportwall 1.400.90

Structural liner tray for double skin system made of sidings like cassettes or sandwich panels.

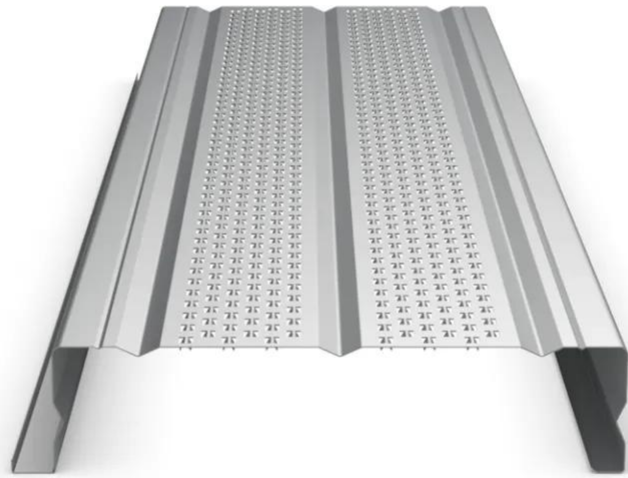
- Horizontal installation of the Supportwall
- Unlimited architecture diversity due to various whether cladding variations : our cassettes and design façade components Coque MD, ST évolution 2, Isofran, Promisol S
- When perforated, our systems offer high sound absorption values in technically important frequency ranges

[Contact us](#)









## Properties

## Accessories

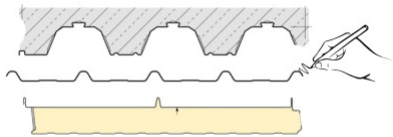
[Request informations](#)

## Related products

[Request informations](#)

## Technical documents

## Documents



2D DWG Supportwall 1.400.90

[View document](#)

## Technical & commercial documentation

[Request informations](#)