

Hacierba® 1.500.90 with stiffeners

Liner tray for steel wall cladding build up solution.

- Cover width of 500mm
- Unlimited architecture diversity due to various cladding variations and colors
- Load-bearing liner trays are used in our double skin "Globalwall systems" with good thermal insulation and sound insulation
- When perforated, our Global wall systems offer high sound absorption values in technically important frequency ranges

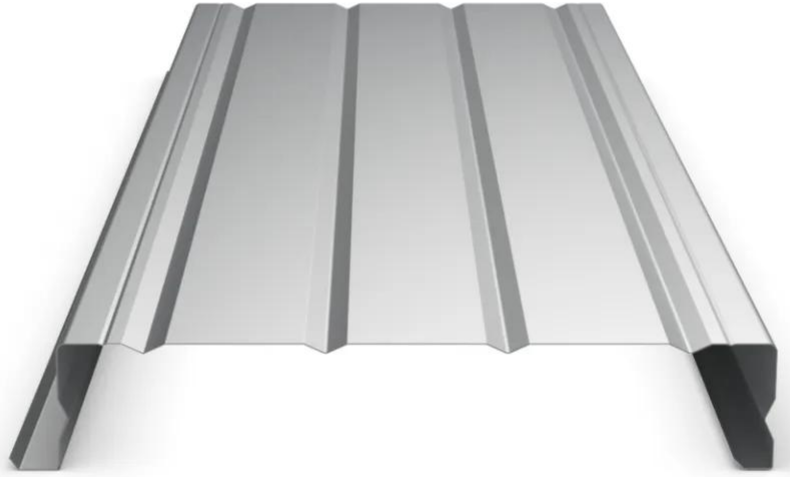
[Contact us](#)

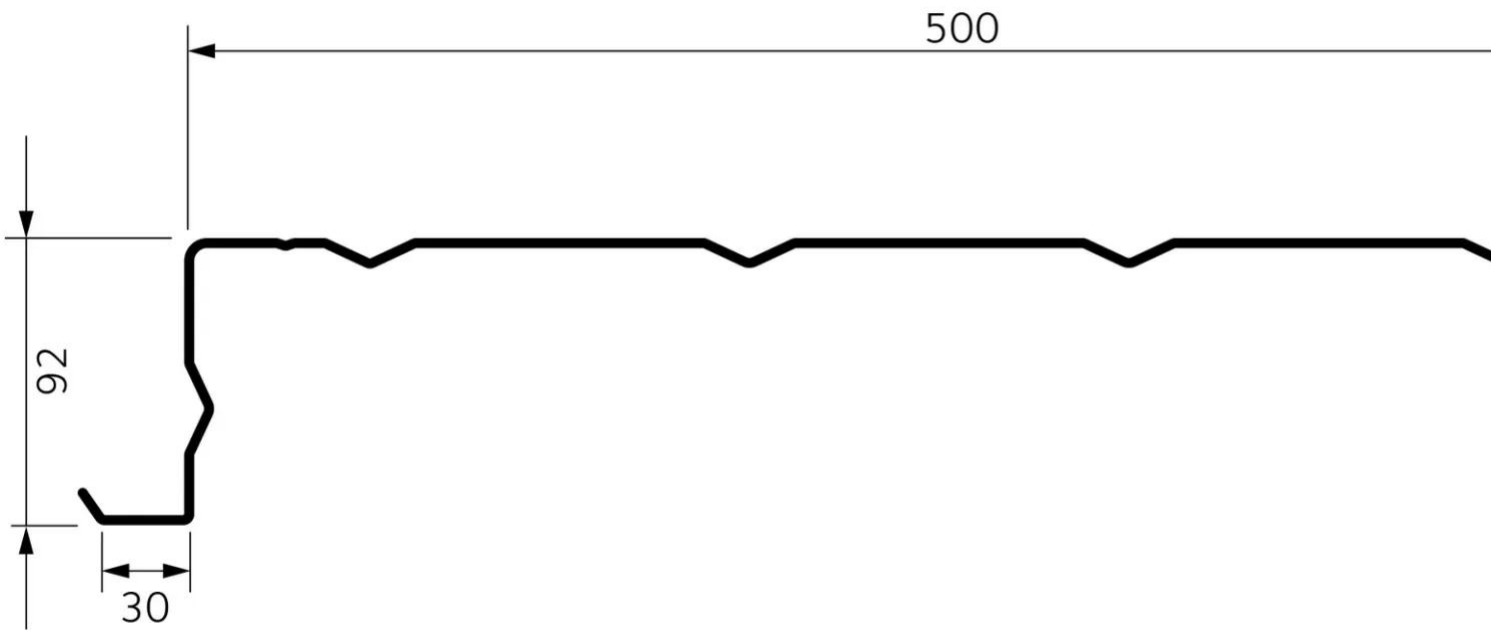
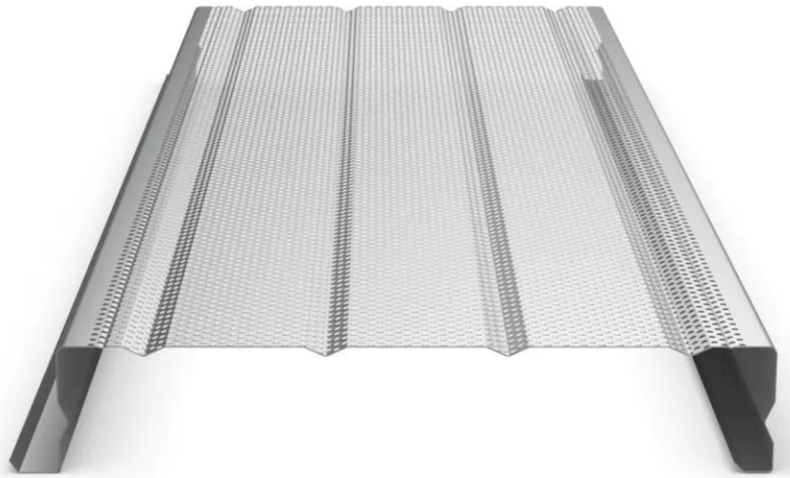


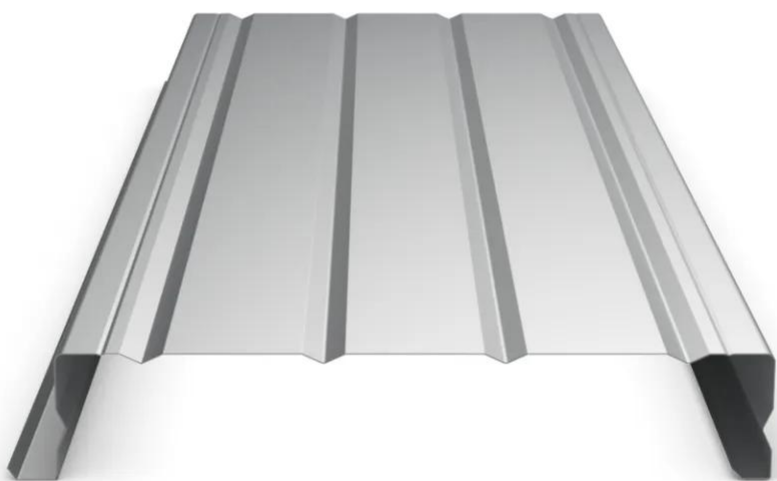
-

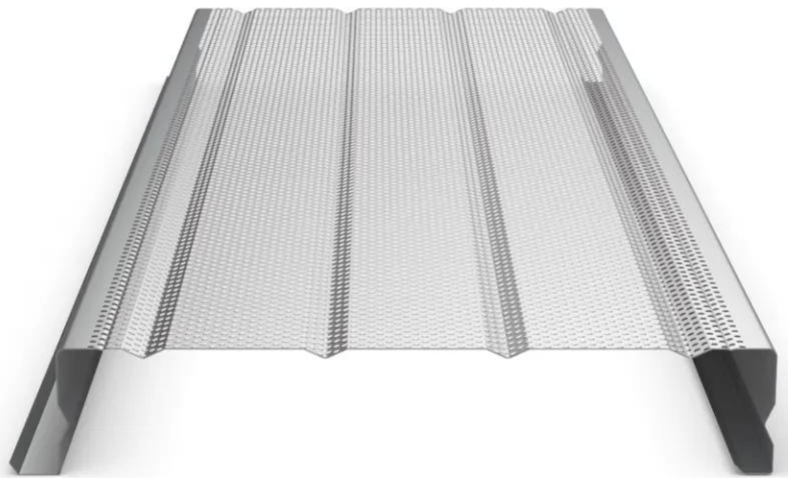


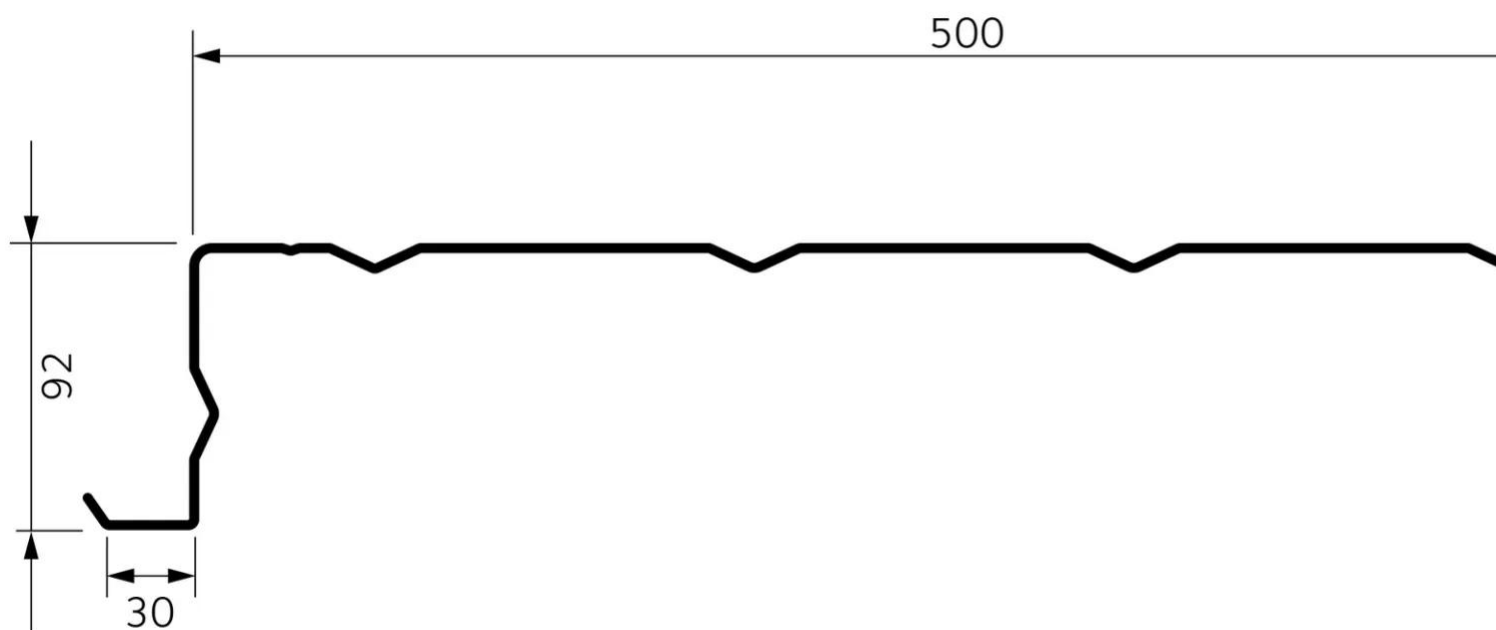
-











Properties

Accessories

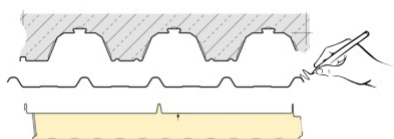
[Request informations](#)

Related products

[Request informations](#)

Technical documents

Documents



2D DWG Hacierba® 1.500.90 with stiffeners

[View document](#)

Technical & commercial documentation

[Request informations](#)

Related projects



[SNCF technicenter Val Notre-Dame - Argenteuil](#)

[Industrial & Logistic](#)

[France](#)

[Argenteuil](#)

[6995 Gold - \[7022\] Umbra - 4978 white & galvanised](#)