

Hacierba® 1.500.90

Liner tray for steel wall cladding build up solution.

- Cover width of 500 mm
- Unlimited architecture diversity due to various cladding and colors variations
- Load-bearing liner trays are used in our double skin "Globalwall systems" with good thermal insulation and sound insulation
- When perforated our Globalwall systems offer high sound absorption values in technically important frequency ranges
- BIM object available [here](#)

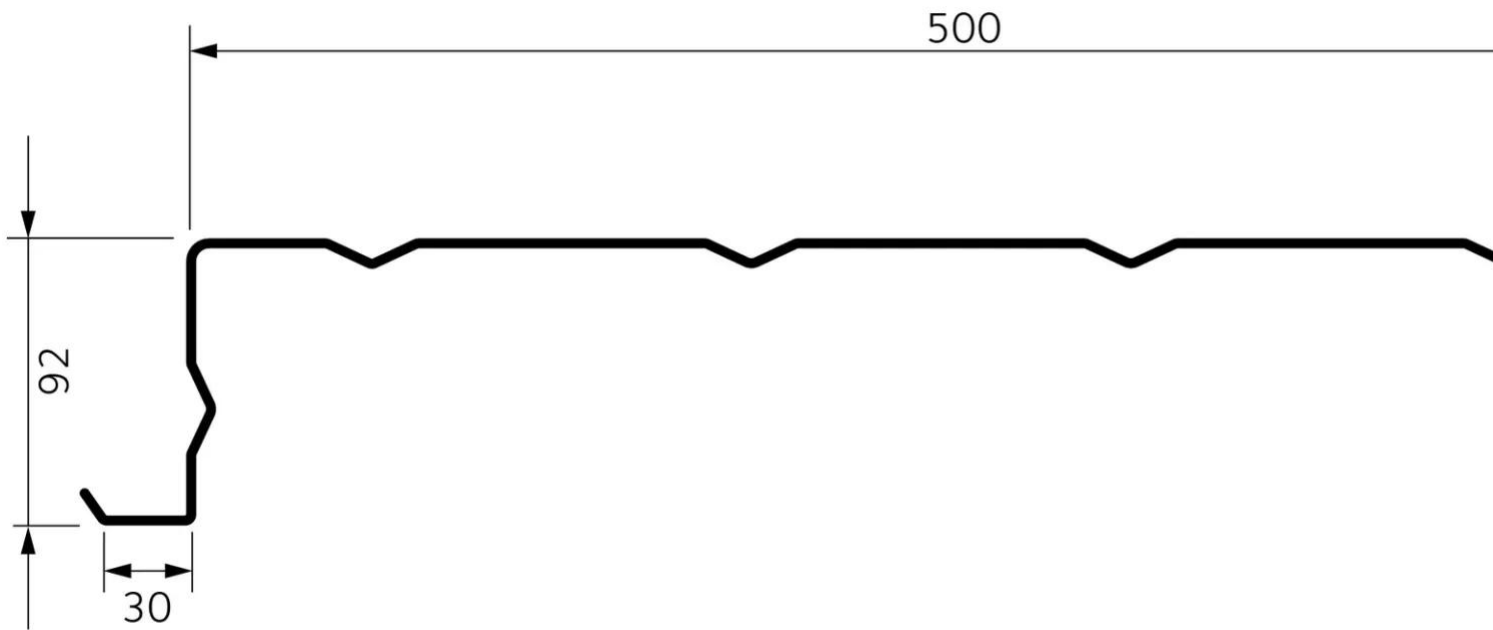
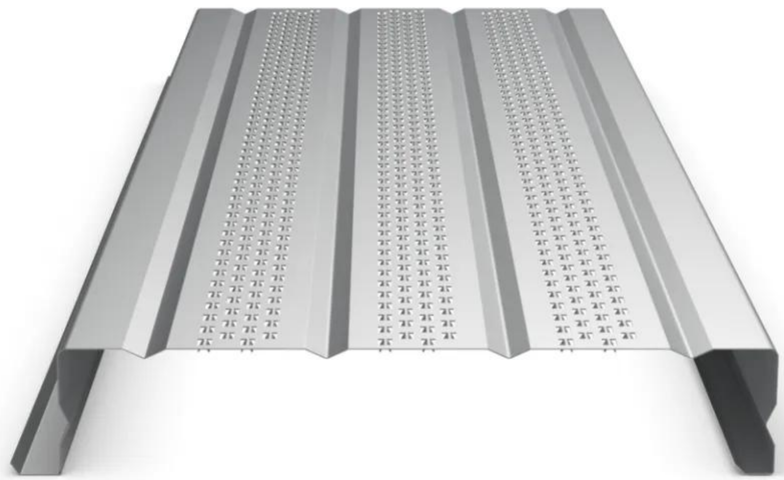
[Contact us](#)

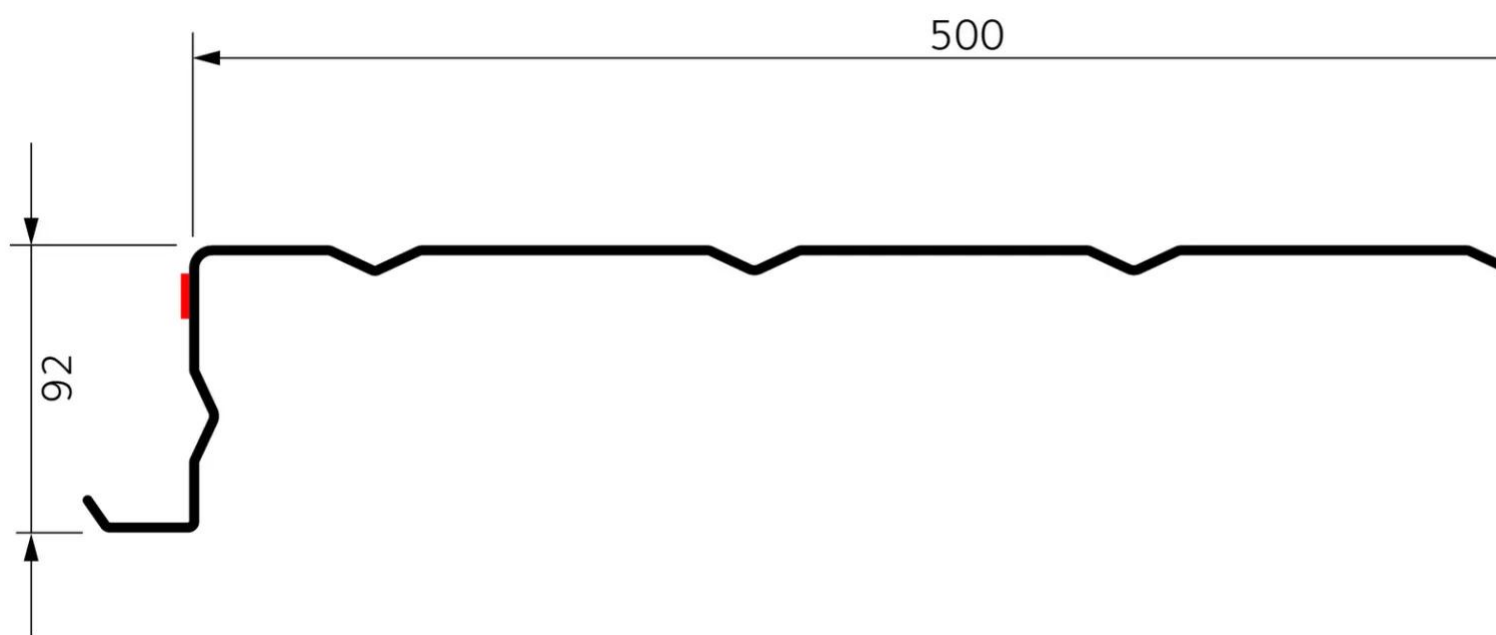
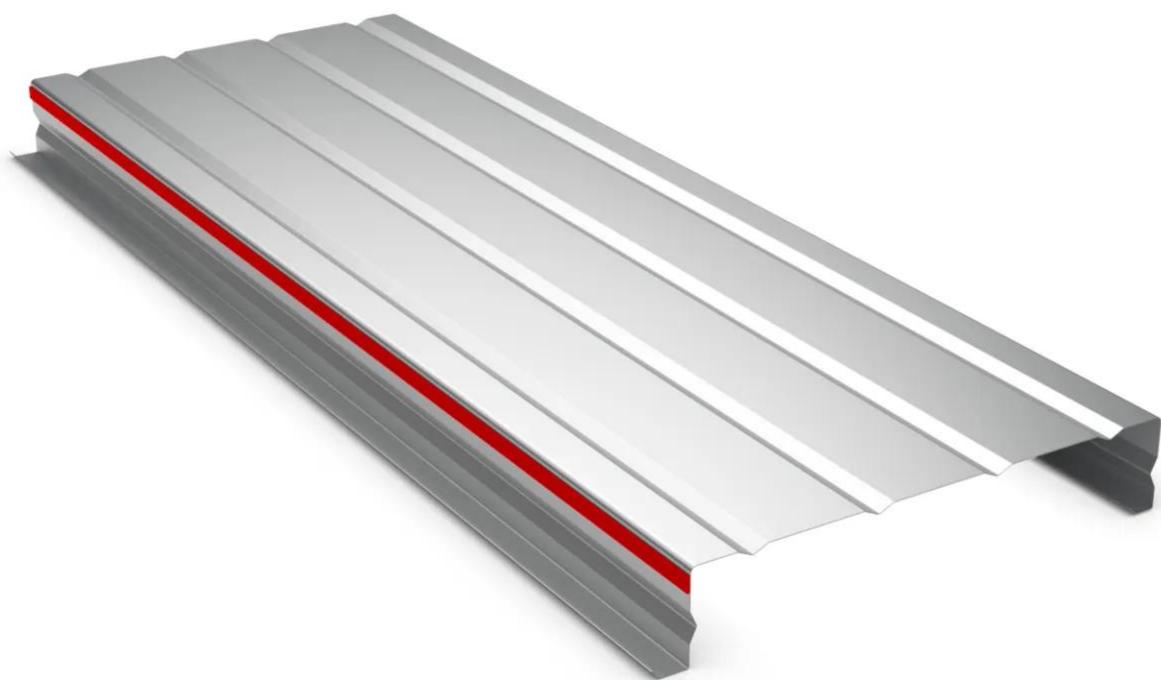


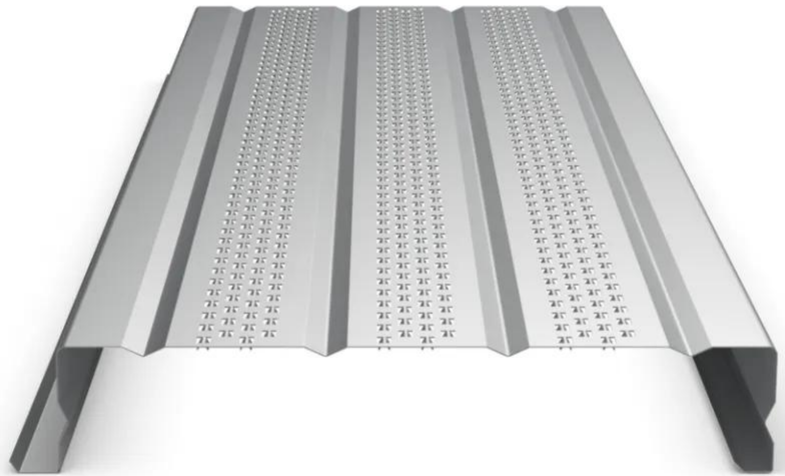
•

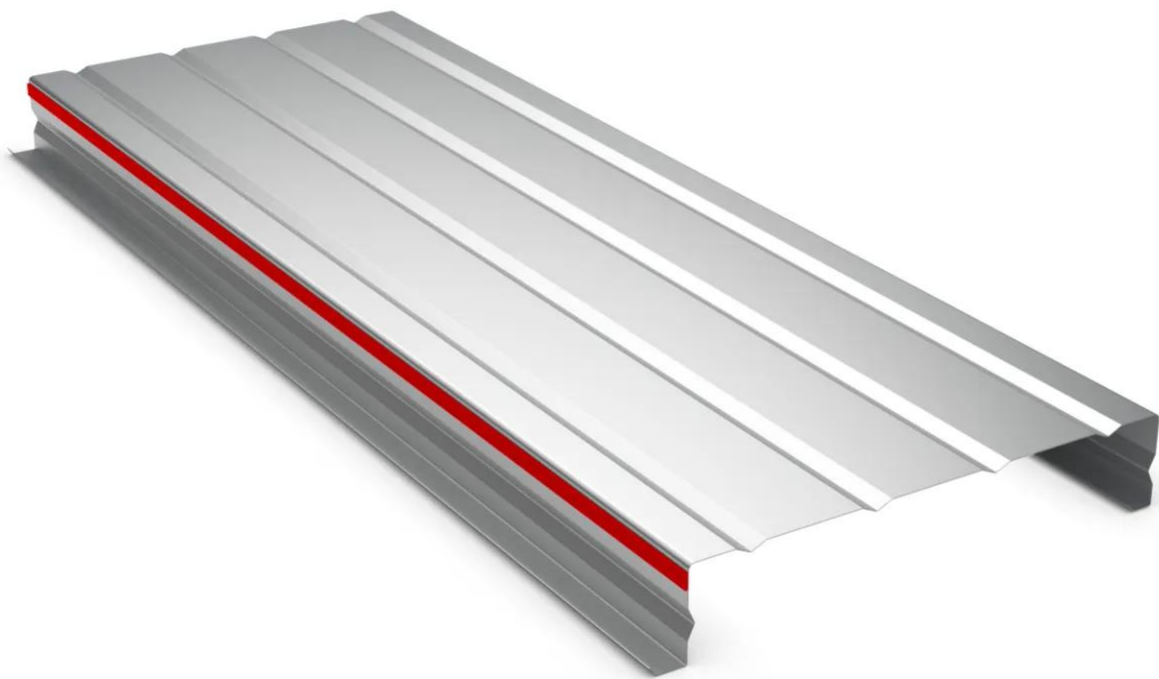
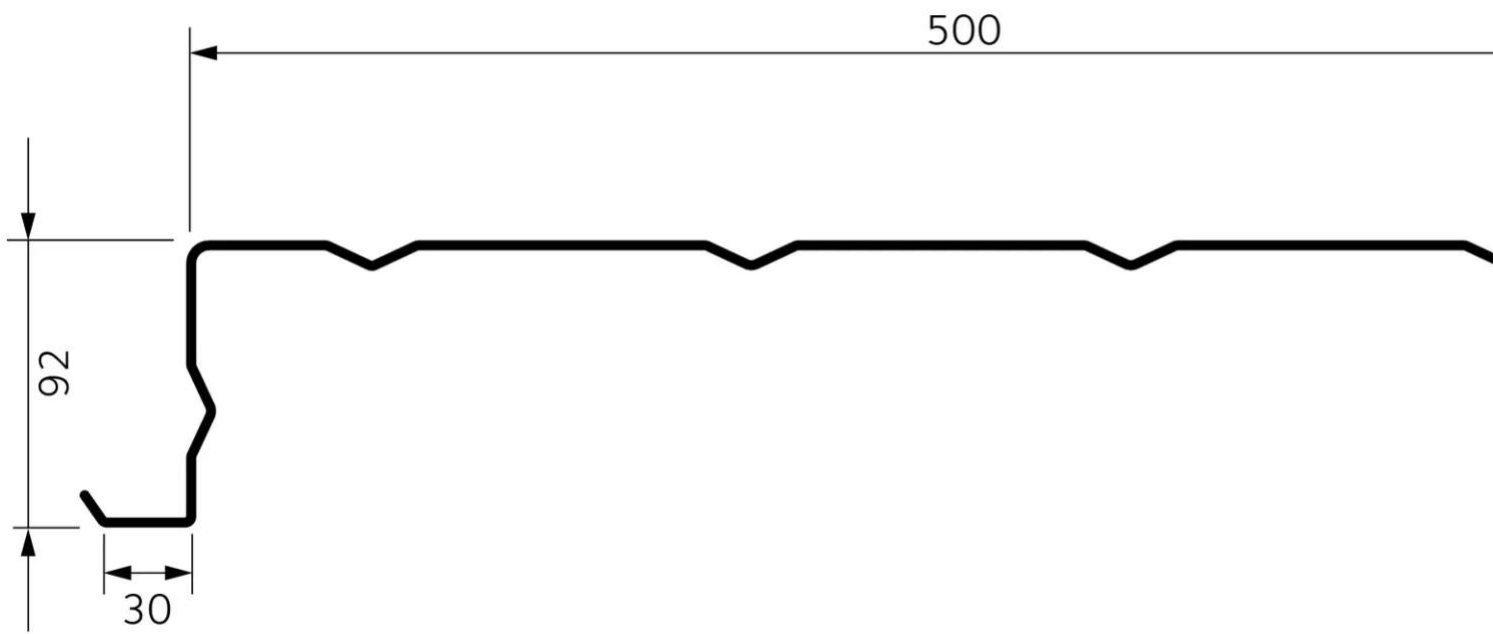


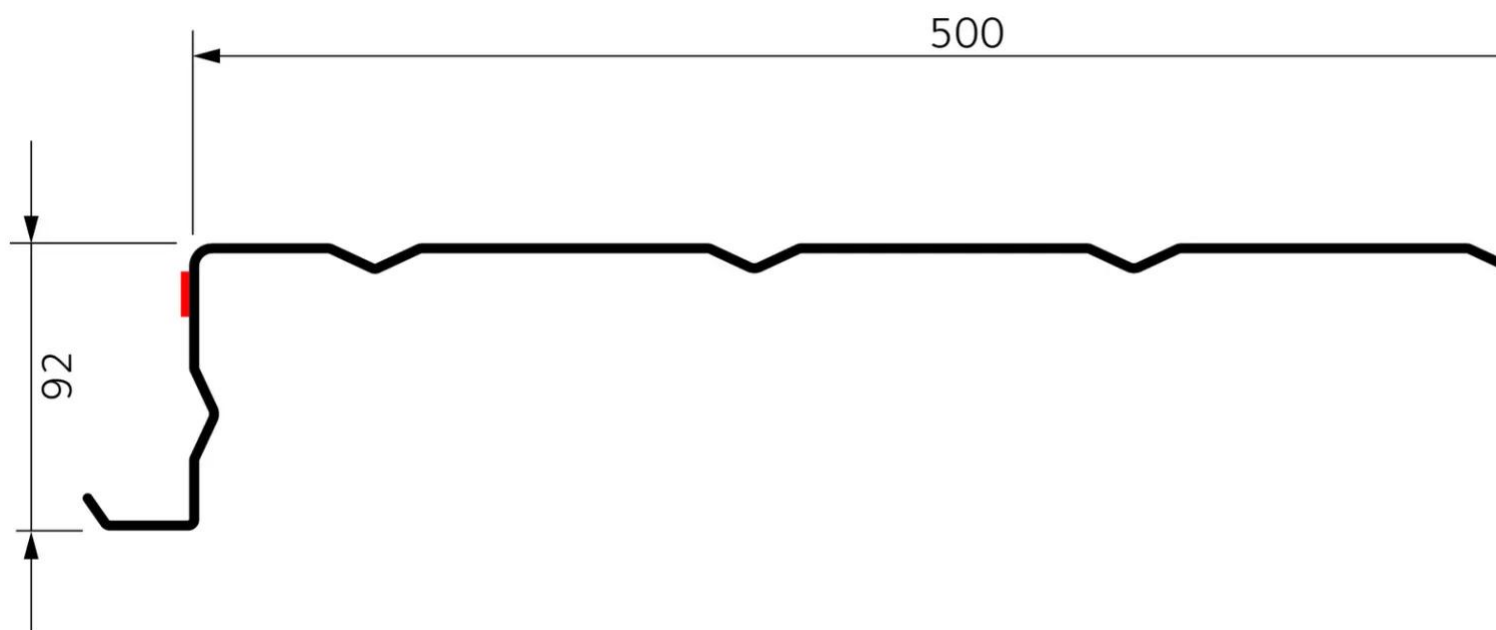
•











Properties

Accessories

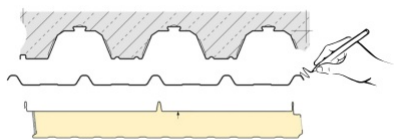
[Request informations](#)

Related products

[Request informations](#)

Technical documents

Documents



2D DWG Hacierba® 1.500.90

[View document](#)

Technical & commercial documentation

[Request informations](#)