

Globalwall® Tophtherm 15 Promirock®

Double skin system with an inner structural tray and an external prefabricated sandwich panel (non combustibile insulation) with an estimated Up of 0.15W/m².K .

Composition :

- Tray Supportwall 500.90 non perforated or perforated type P with a thickness of 1mm or more according to the span
- Glass wool or mineral wool with a thickness of 90mm (in the bottom of the tray , λ = 0.040W/m.K maximum)
- Airtight Vapor barrier film
- Purlin Multibeam on cleats
- Glass wool or mineral wool with a thickness of 150mm (unrolled between spacers, λ = 0.040W/m.K maximum)
- Sandwich panel Promistyl®S or V with a thickness of 100mm

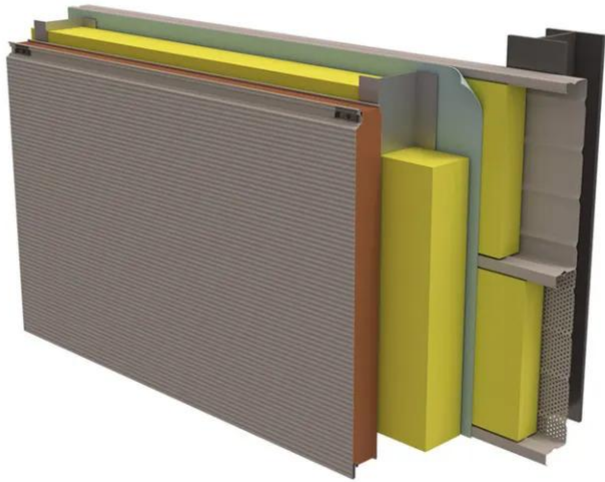
Performance and characteristics :

- Thermal transmittance Up = 0.15W/m².K
- Spacing: about 34cm overall

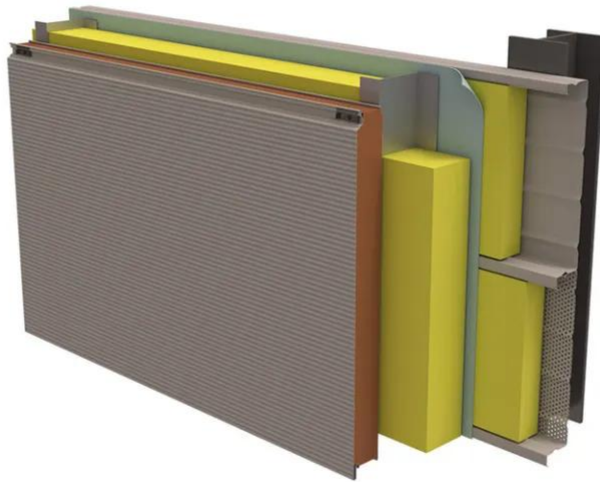
[Contact us](#)



-



-



Properties

Accessories

[Request informations](#)

Related products

[Request informations](#)

Technical documents

[Request informations](#)

Technical & commercial documentation

[Request informations](#)