

Globalwall® DPE 25

Double skin system with an inner structural tray and an external weather steel profile with an estimated Up of 0.25W/m².K.

Composition :

- Hacierba Tray 1.500.90 non perforated ou perforated type P (SR ou SRP). Thickness according to the span
- Glass wool or mineral wool with a thickness of 90mm (in the bottom of the tray, $\lambda = 0.040\text{W/m.K}$ maximum)
- Airtight vapor barrier film
- Glass wool with a thickness of 60mm (nipped under spacers, $\lambda = 0.040\text{W/m.K}$ maximum)
- Height of spacer = thickness of insulation 4 + 6 in case of vertical installation of wall profile or = thickness of insulation 4 + 6 +20mm in case of horizontal installation of the wall profile
- Glass wool or mineral wool with a thickness of 120mm (unrolled between spacers, $\lambda = 0.040\text{W/m.K}$ maximum)
- Wall cladding profile Frequence. Oceane or Trapeza. or siding ST 500. Mascaret. ST Lumière

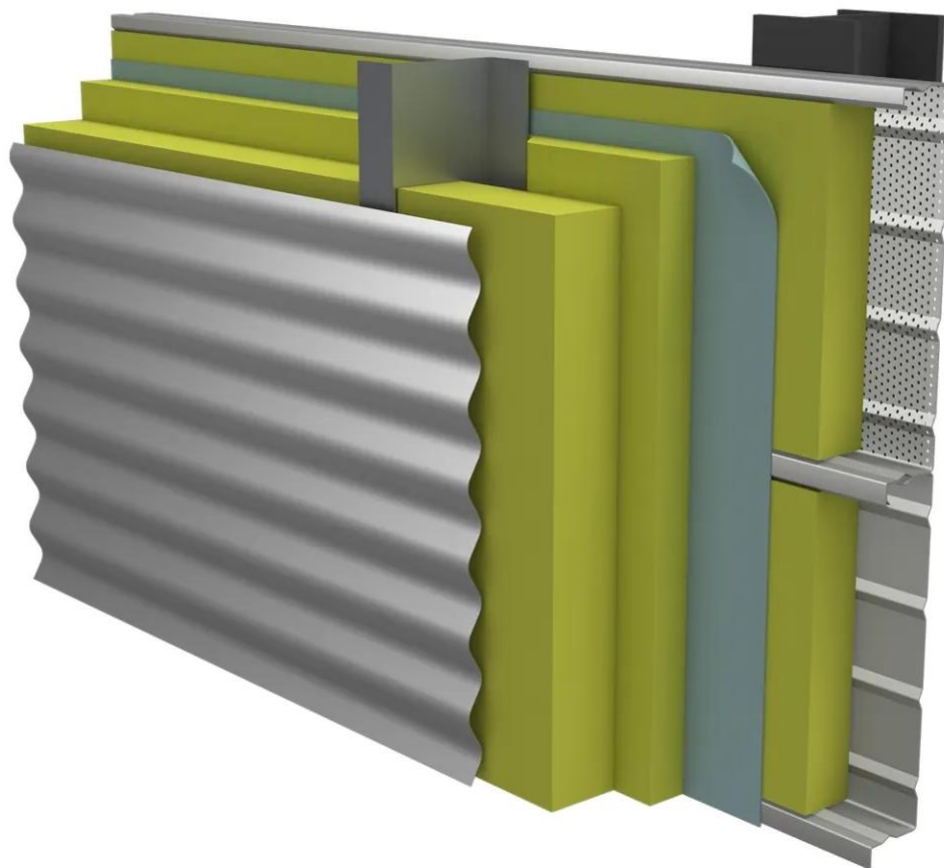
Performance and characteristics :

- Thermal transmittance Up = 0.25W/m².K
- Spacing: about 27cm. not including the height of the external weather profile

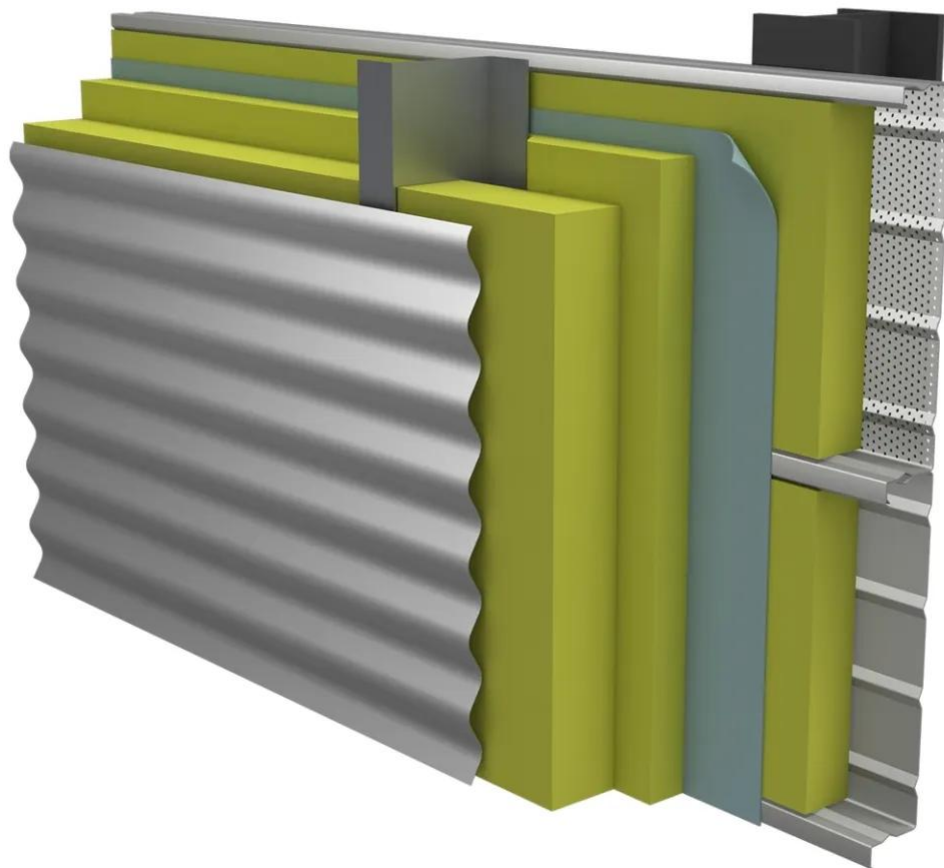
[Contact us](#)



-



-



Properties

Accessories

[Request informations](#)

Related products

[Request informations](#)

Technical documents

[Request informations](#)

Technical & commercial documentation

[Request informations](#)