

Globalwall® IN 235 Doublage

IN 235 is a double skin system with an inner structural tray and an external weather steel profile of minimum 0.75mm horizontally laid. Additonnal an inner gypsum plaster board is included in the system offering an exceptionnel sound insulation of 62dB.

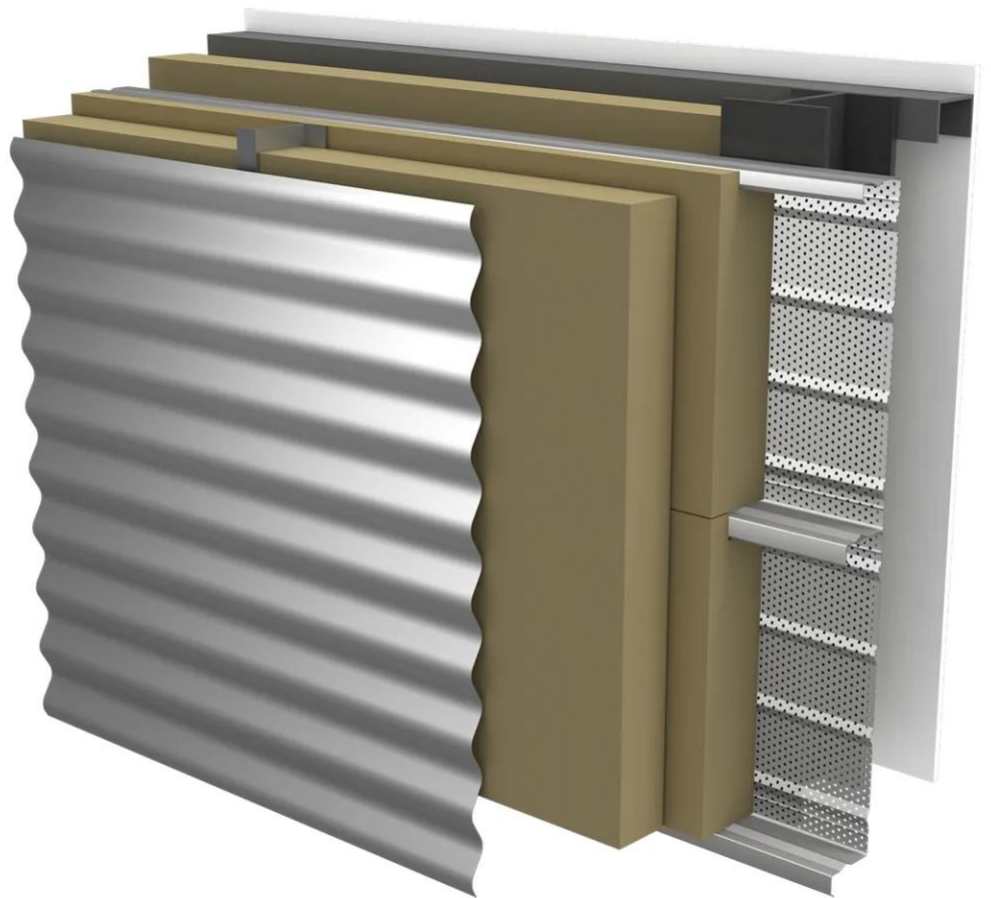
Composition

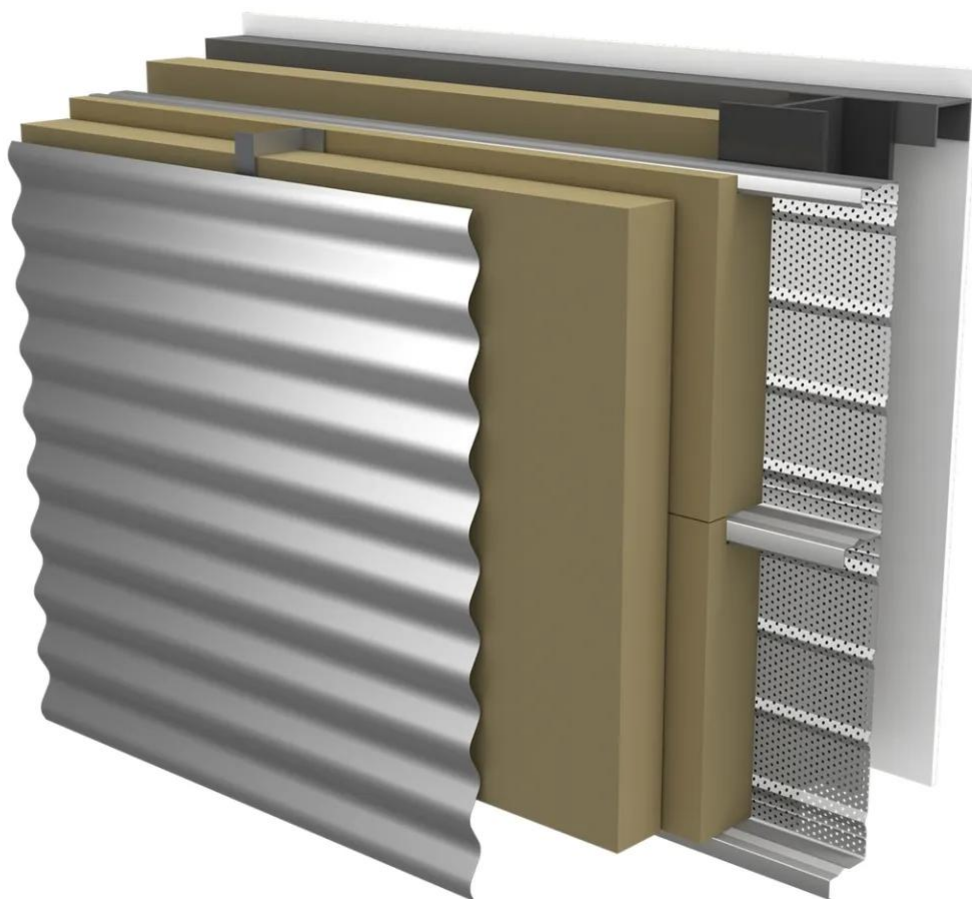
- Hacierba Tray 1.500.90 SRP perforated P in thickness 0.75mm
- Rockbardage Energy in thickness 150mm (Rockwool)
- Zed
- Rockfaçade in thickness 100mm (Rockwool)
- Profile Trapeza. Frequence or Oceane in thickness 0.75mm
- Rockmur kraft in thickness 100mm (Rockwool)
- Structure
- Plaster board BA 13

Performance and characteristics

- Sound reduction index $R_w(C;Ctr) = 62(-6;-13)$ dB
- Thermal transmittance $U_p = 0.16W/m^2.K$ estimated
- Weight: $40kg/m^2$
- Spacing: 38cm. not including the height of the external weather profile

[Contact us](#)





Properties

Accessories

[Request informations](#)

Related products

[Request informations](#)

Technical documents

[Request informations](#)

Technical & commercial documentation

[Request informations](#)