

## Globalwall® IN 600R

IN 600R is a double skin system with an inner structural tray and an external weather steel profile of minimum 0.75mm vertically installed offering an estimated  $U_p$  of  $0.24 \text{ W/m}^2 \cdot \text{K}$  and a very good sound insulation.

### Composition

- Hacierba Tray 1.600.150 VK -thickness 0.75mm
- Sorock 50mm thick +Rockbardage Energy 160mm thick
- or rockbardage Energy thickness 210mm
- Wall cladding profile Trapeza. Frequence or Oceane 0.75mm

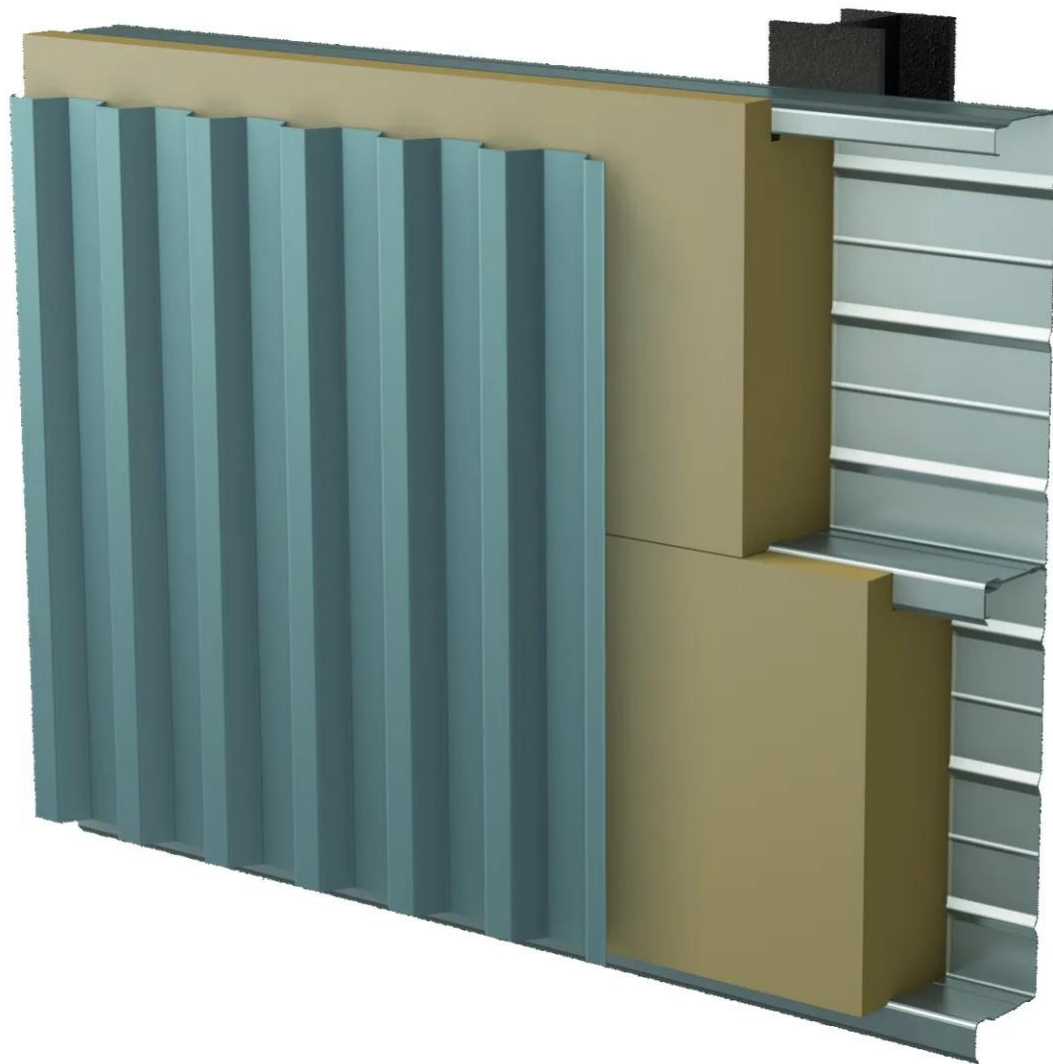
### Performance and characteristics

- Sound reduction index  $R_w(C;Ctr) = 50(-4;-12) \text{ dB}$
- Thermal transmittance  $U_p = 0.24 \text{ W/m}^2 \cdot \text{K}$  estimated
- Weight:  $27 \text{ kg/m}^2$
- Spacing: 21cm . not including the height of the external weather profile

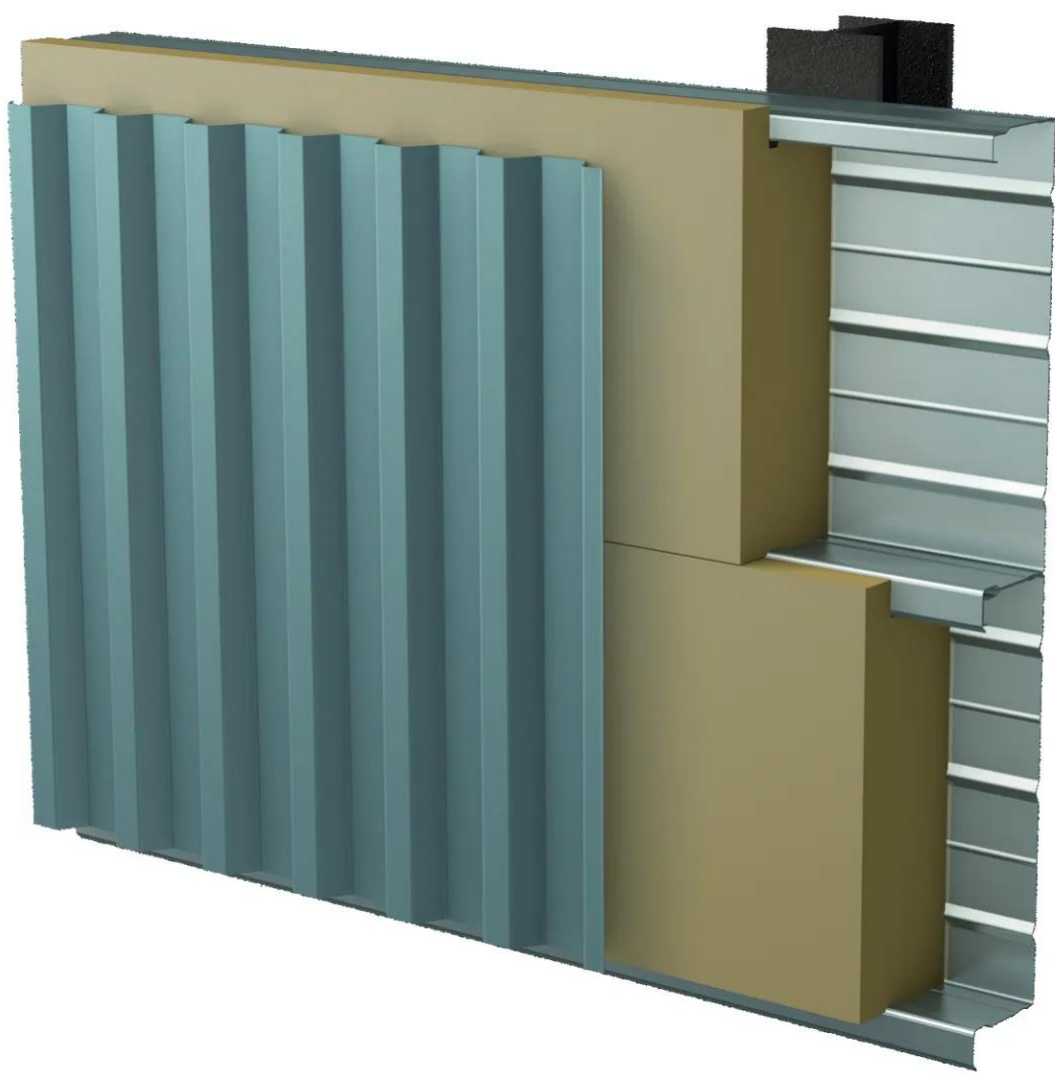
[Contact us](#)



•



•



## Properties

## Accessories

[Request informations](#)

## Related products

[Request informations](#)

## Technical documents

[Request informations](#)

## Technical & commercial documentation

[Request informations](#)