

Globalwall® IN 620R

IN 600 R is a double skin system with an inner structural tray and an external weather steel profile of minimum 0.75mm horizontally installed offering an estimated Up of 0.18W/m².K and an excellent sound insulation.

Composition

- Hacierba Tray 1.600.150 VK in tThickness 0.75mm
- Sorock 50mm thick +Rockbardage Energy 160mm thick
- Or Rockbardage Energy in thickness 210mm
- Spacer
- Rockfaçade 100mm thick
- Wall cladding profile Trapéza. Fréquence or Océane in thickness 0.75mm

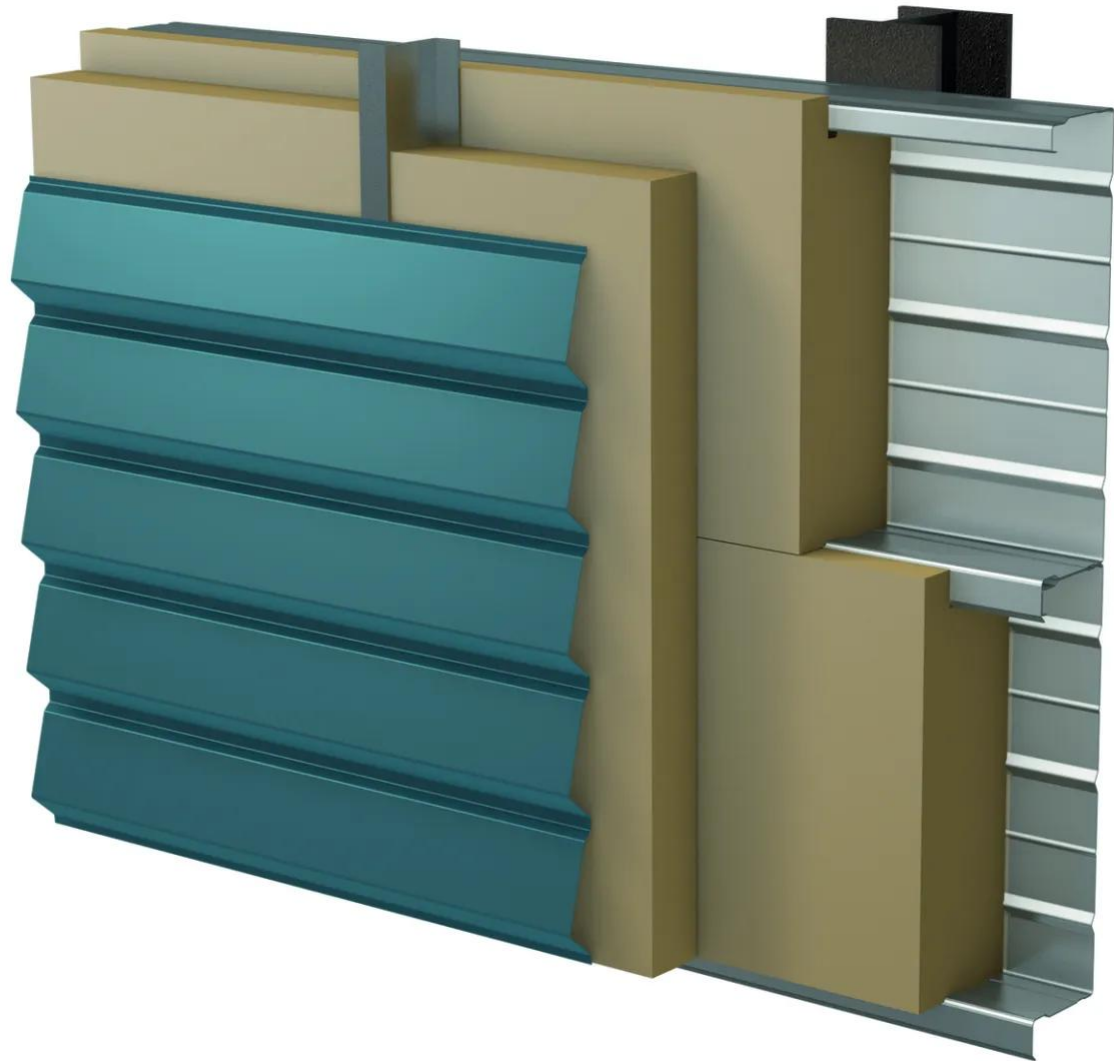
Performance and characteristics

- Sound reduction index $R_w(C;Ctr) = 57(-6;-14)$ dB
- Thermal transmittance $U_p = 0.18W/m^2.K$ estimated
- Weight: 31kg/m²
- Spacing: 31cm . not including the height of the external weather profile

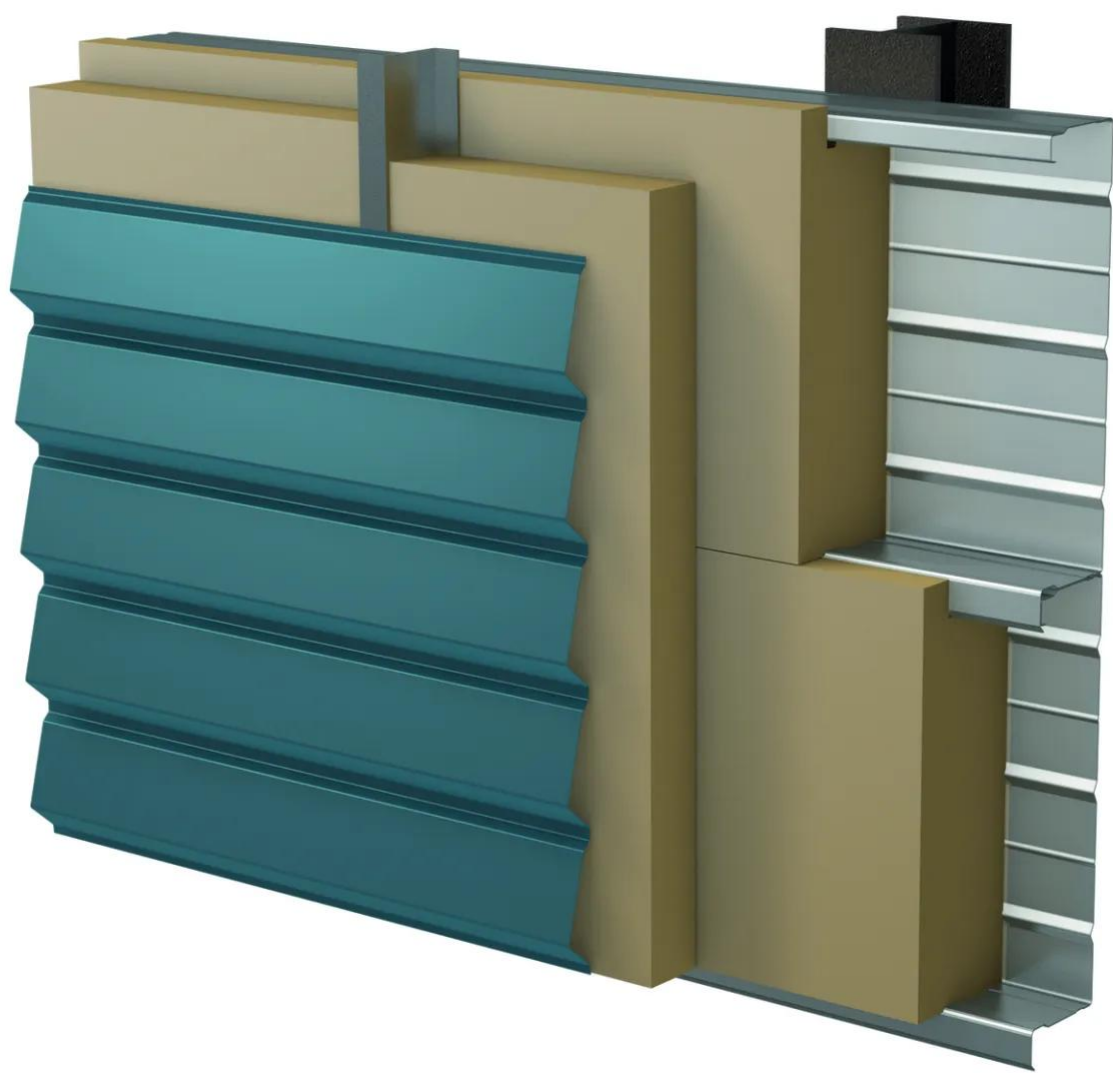
[Contact us](#)



•



•



Properties

Accessories

[Request informations](#)

Related products

[Request informations](#)

Technical documents

[Request informations](#)

Technical & commercial documentation

[Request informations](#)