

Globalwall® CIN 326i

Double skin system with an inner structural perforated tray and an external weather steel profile of minimum 0.75mm for excellent acoustic absorption. Good sound insulation performance and a thermal Up estimated value of 0.15W/m².K.

Composition :

- Hacierba Tray 1.500.90 SRP perforated P with a of thickness 0.75mm
- Cladoustic with a thickness of 20mm
- Cladipan 32 with a thickness of 130mm
- Spacer
- Isobardage 32 with a thickness of 120mm
- Wall cladding profile Trapeza, Frequence or Oceane with a thickness of 0.75mm

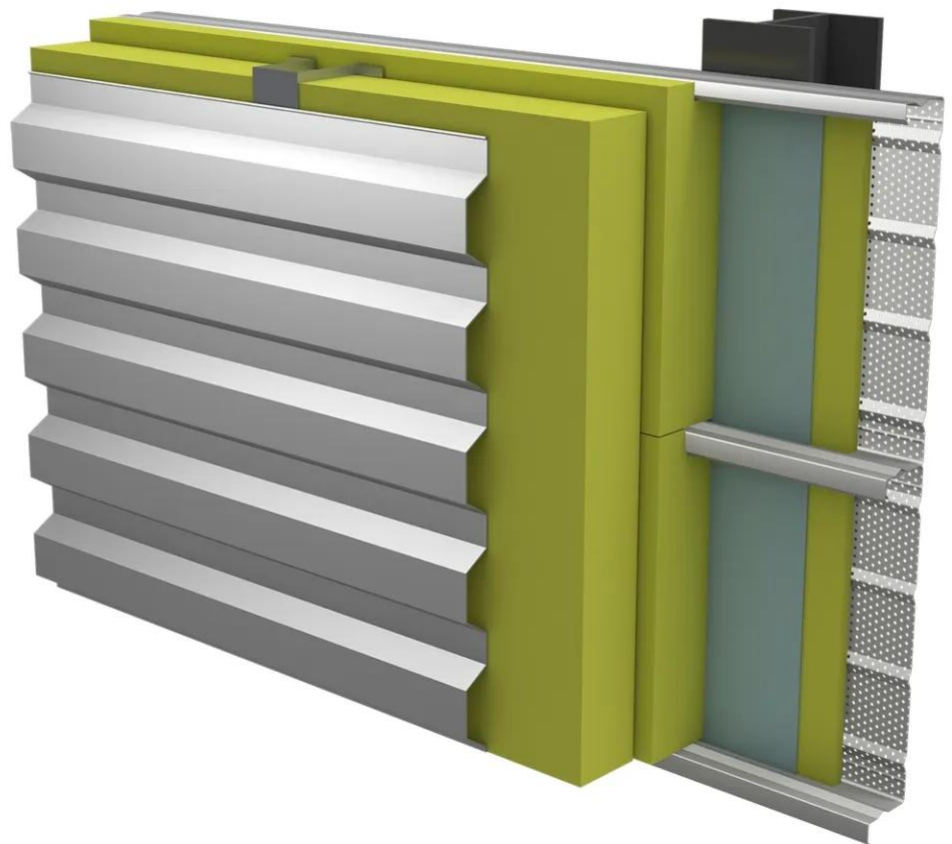
Performance and characteristics :

- Sound reduction index $R_w(C;Ctr) = 43(-4;-12)$ dB
- Acoustic absorption $\alpha_w = 1.00$
- Thermal transmittance $U_p = 0.15\text{W/m}^2\cdot\text{K}$ estimated
- Weight: 25kg/m²
- Spacing: 27cm . not including the height of the external weather profile

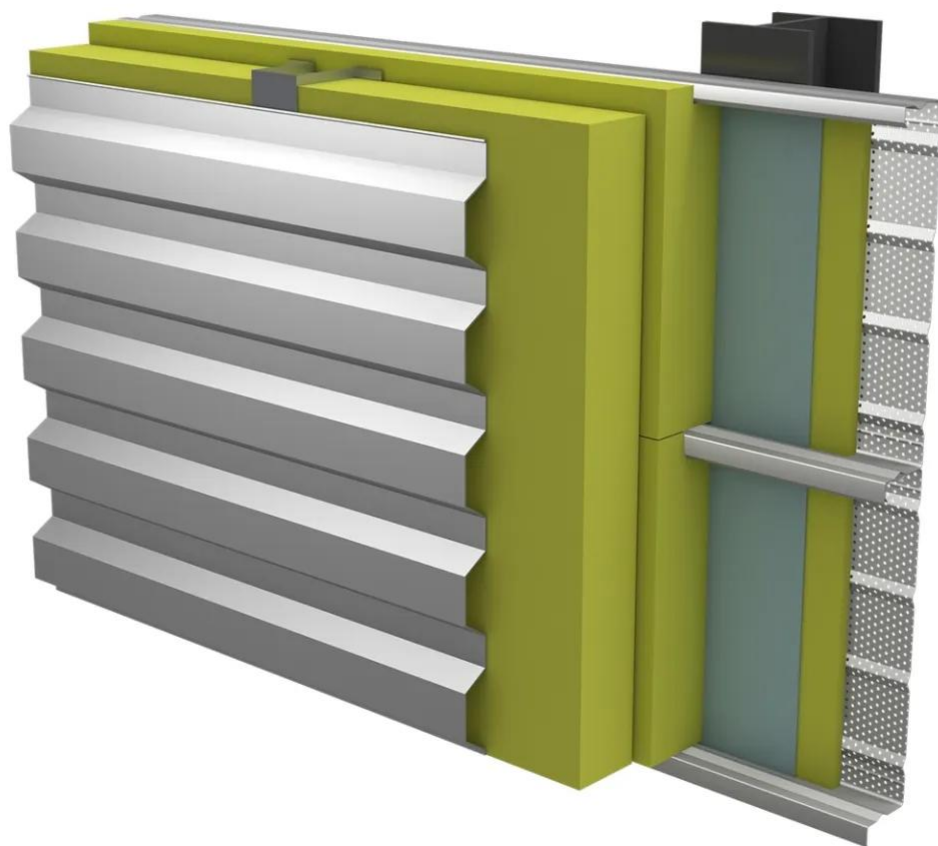
[Contact us](#)



•



•



Properties

Accessories

[Request informations](#)

Related products

[Request informations](#)

Technical documents

[Request informations](#)

Technical & commercial documentation

[Request informations](#)