

Globalwall® CN 125RTP

Double skin system with an inner structural perforated tray and an external weather steel profile of 0.75mm or more. Vertical laid for good sound insulation.

Composition :

- Hacierba Tray perforated P with a thickness of 0.75mm
- Panolene cladding with a thickness of 50mm (black glass veil)
- Spacer
- Flexible glass wool roll coated with an aluminum vapor barrier with a thickness of 100mm
- Profile Trapeza. Frequence or Oceane

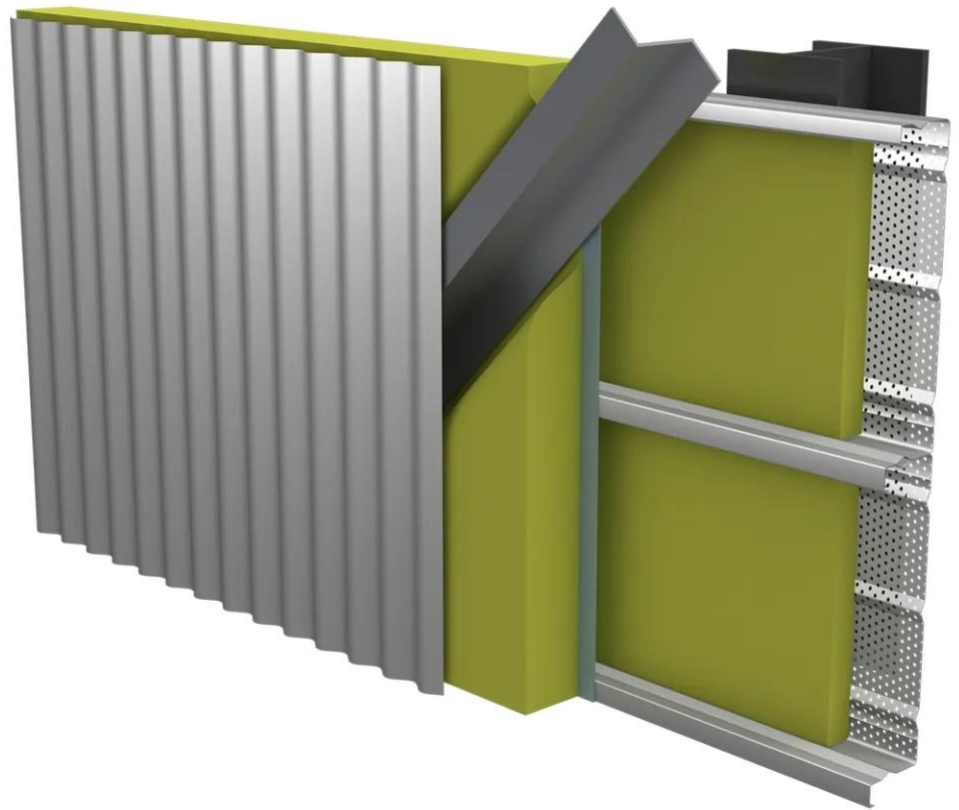
Performance and characteristics :

- Sound reduction index $R_w(C;Ctr) = 35(-1;-6)$ dB
- Acoustic absorption $\alpha_w = 0.85$
- Thermal transmittance $U_p = 0.36W/m^2.K$ estimated
- Weight: 18kg/m²
- Spacing: 15cm. not including the height of the external weather profile

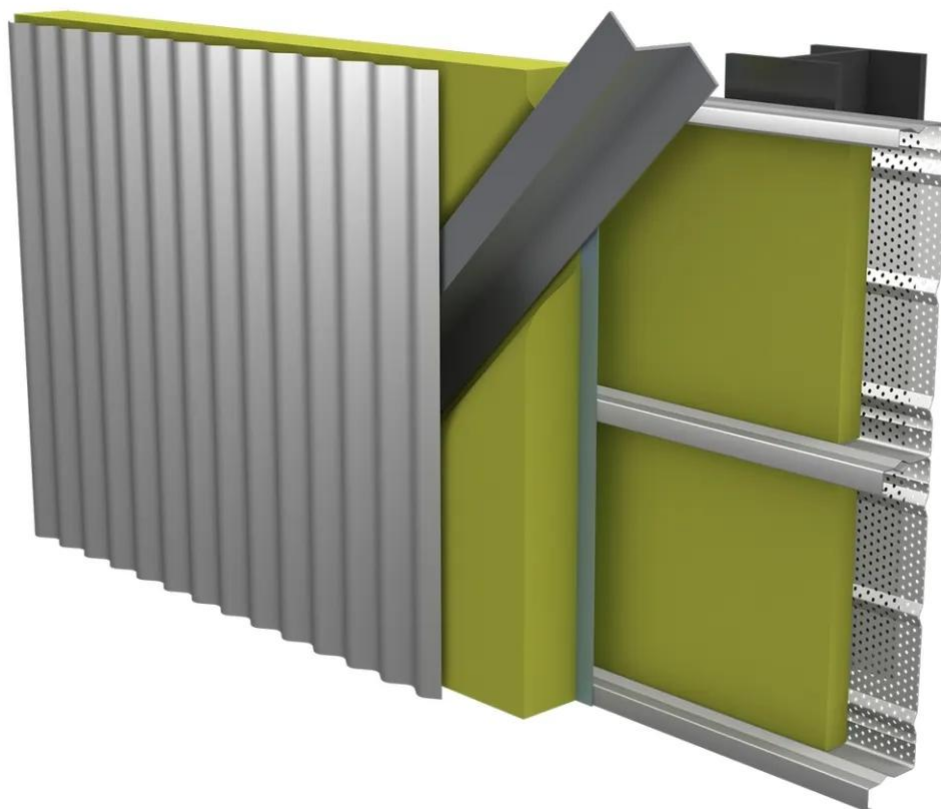
[Contact us](#)



•



•



Properties

Accessories

[Request informations](#)

Related products

[Request informations](#)

Technical documents

[Request informations](#)

Technical & commercial documentation

[Request informations](#)