

## Globalwall® CN 610R

Double skin system with an inner structural perforated tray and an external weather steel profile of minimum 0.75mm for excellent acoustic absorption and a thermal Up estimated value of 0.24W/m².K.

Composition :

- Hacierba Tray 1.600.150 VKP with a thickness of 0.75mm
- Sorock with a thickness of 50mm
- Rockbardage Energy with a thickness of 160mm or 2 + 3 Rockbardage Energy thickness 210mm
- Wall cladding profile Trapeza. Frequence or Oceane with a thickness of 0.75mm

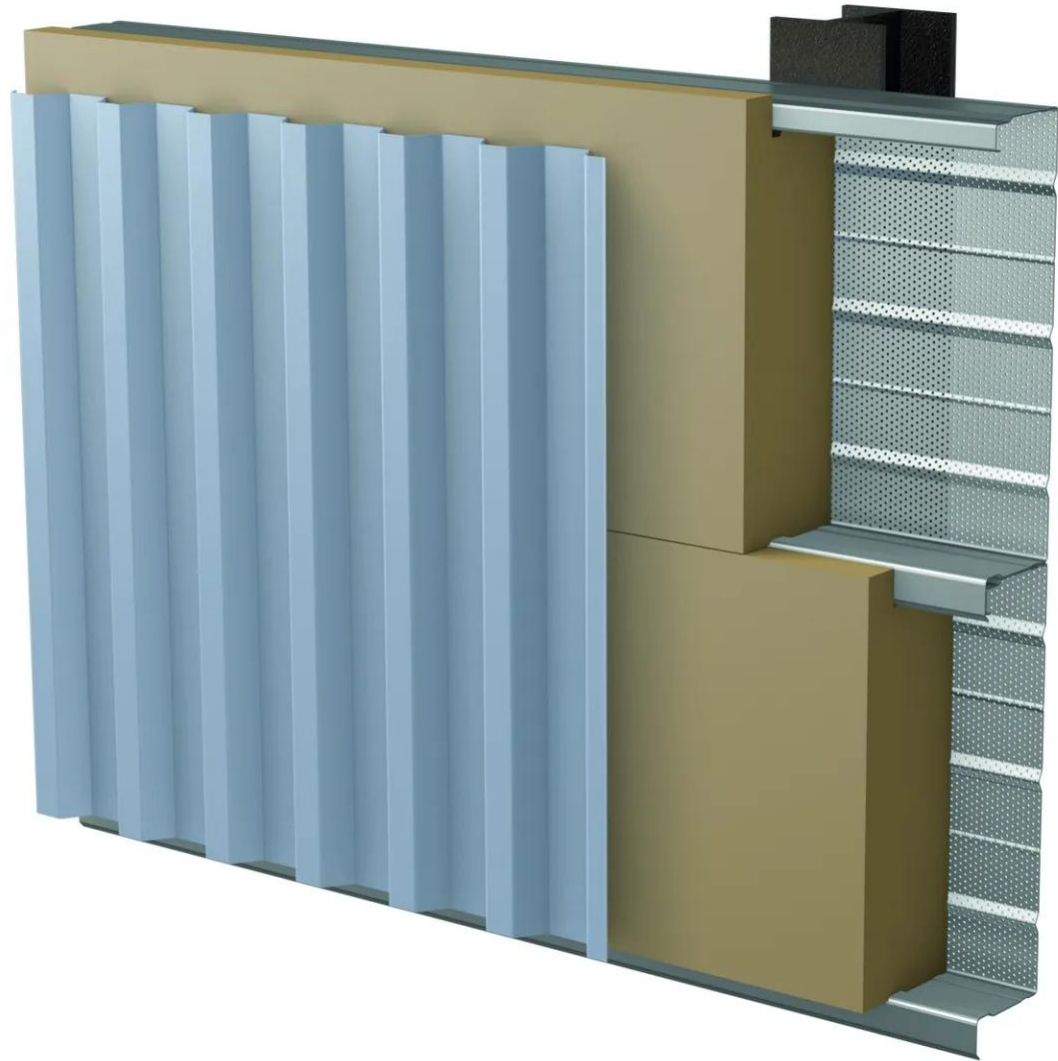
Performance and characteristics :

- Sound reduction index  $R_w(C;Ctr) = 40(-3;-10)$  dB
- Acoustic absorption  $\alpha_w = 0.95$
- Thermal transmittance  $U_p = 0.24W/m^2.K$  estimated
- Weight: 27kg/m²
- Spacing: 21cm. not including the height of the weather external profile

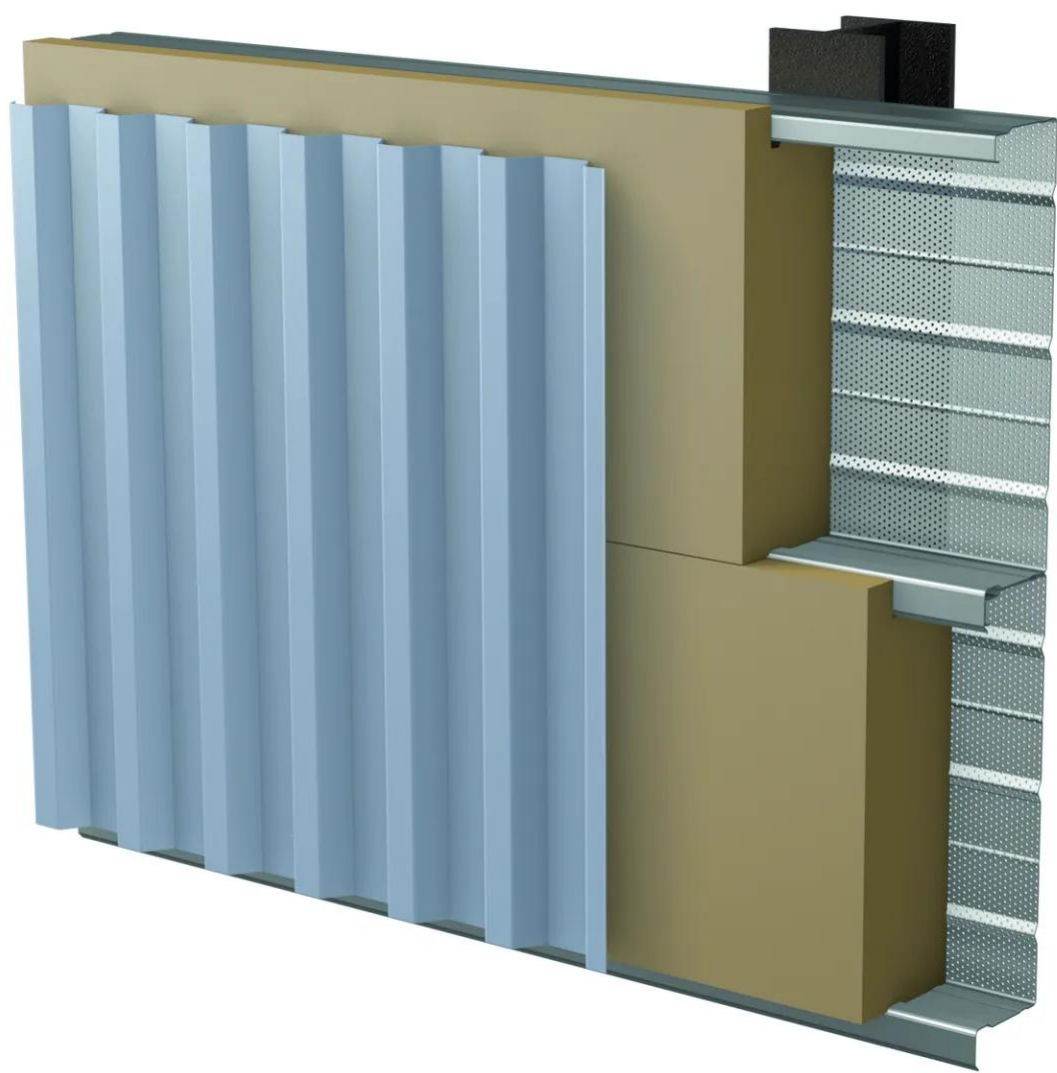
[Contact us](#)



•



•



## Properties

## Accessories

[Request informations](#)

## Related products

[Request informations](#)

## Technical documents

[Request informations](#)

## Technical & commercial documentation

[Request informations](#)