

Globalwall® IN 220RT

Basic double skin system with an inner structural tray and an external weather steel profile and its sound insulation performance.

Composition :

- Tray Hacierba with a thickness of 0.75mm
- Panolene bardage with a thickness of 50mm
- Spacer
- Flexible glass wool for cladding covered with reinforced glass veil with a thickness of 100mm
- Profile Trapeza, Frequence or Oceane

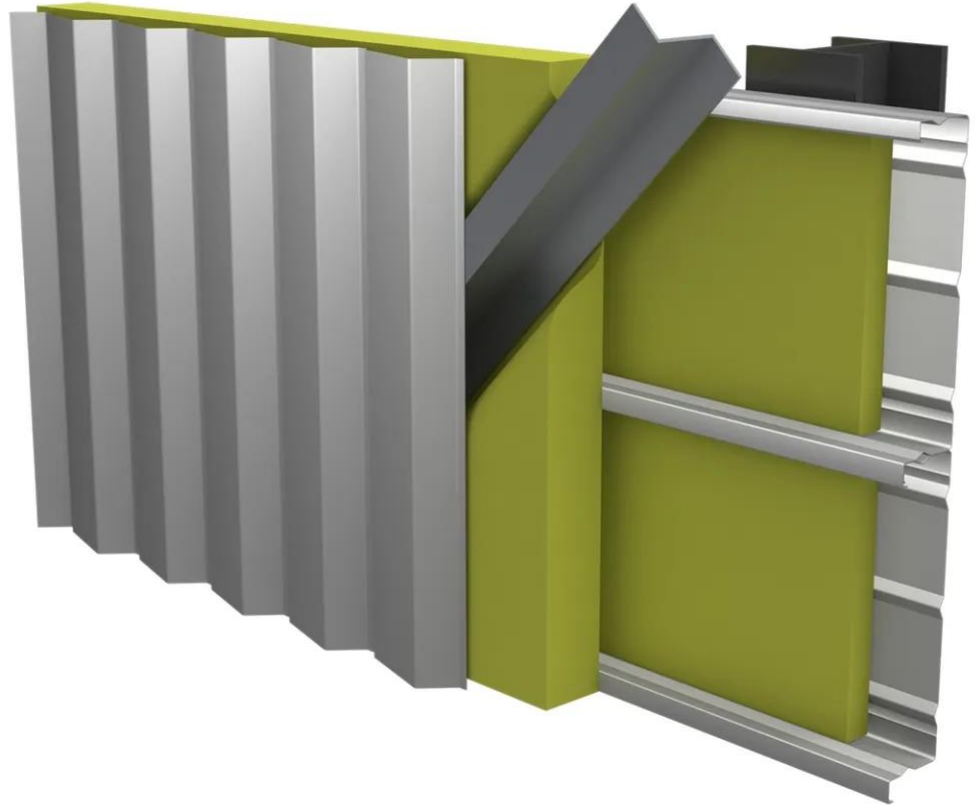
Performance and characteristics :

- Sound reduction index $R_w(C;Ctr) = 42(-4;-11)$ dB
- Thermal transmittance $U_p = 0.36W/m^2.K$ estimated
- Weight: $18kg/m^2$
- Spacing: 15cm . not including the height of the external weather profile

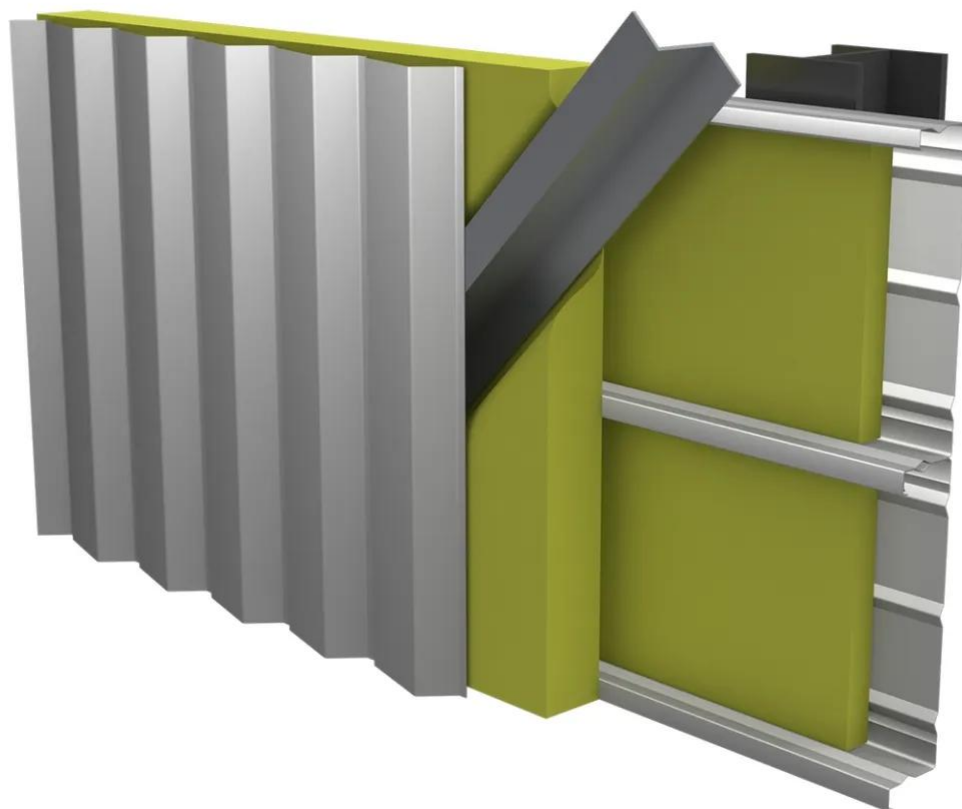
[Contact us](#)



-



-



Properties

Accessories

[Request informations](#)

Related products

[Request informations](#)

Technical documents

[Request informations](#)

Technical & commercial documentation

[Request informations](#)