

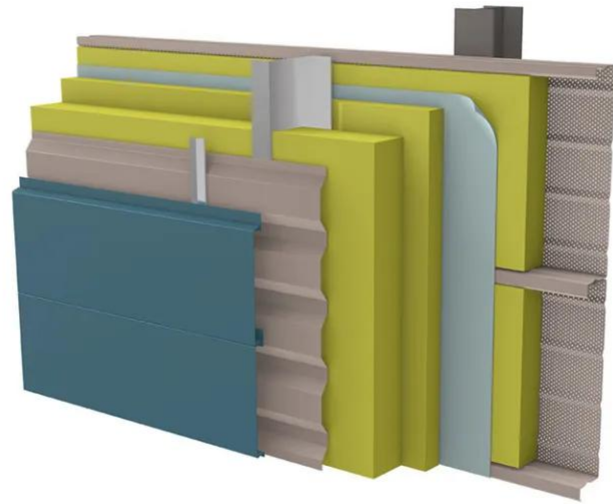
Globalwall CIN 339ST

This system combines precision and performance with carefully selected components for structural and thermal efficiency. It features 1.500.90P liner trays, glass wool insulation, vapor and rain barriers, and Omega spacers. Cladding felts provide additional insulation, while the ST300 blade ensures durability. With optimized thicknesses for each layer, this solution is designed for long-lasting, efficient construction.

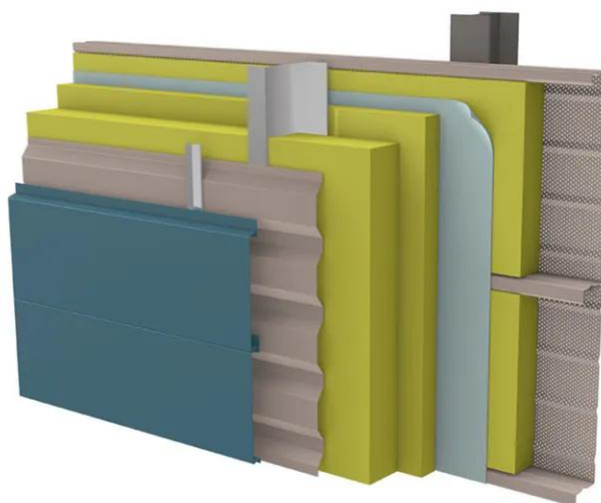
[Contact us](#)



•



•



Properties

Accessories

[Request informations](#)

Related products

[Request informations](#)

Technical documents

[Request informations](#)

Technical & commercial documentation

[Request informations](#)