

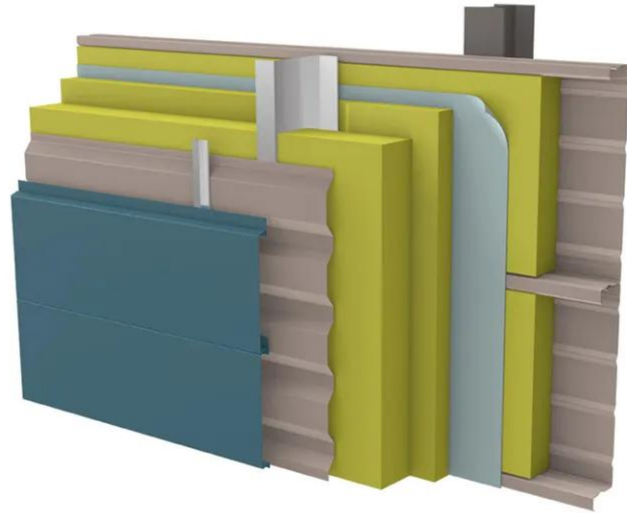
Globalwall IN 236ST

This construction system combines durable materials and precise layering for optimal performance. It features a Hacierba deck with stiffeners, high-quality insulation, vapor and rain barriers, and strategically placed spacers for structural integrity. Each component, from cladding felt to the ST 300, is designed to ensure durability, thermal efficiency, and weather resistance, making it ideal for robust and efficient building solutions.

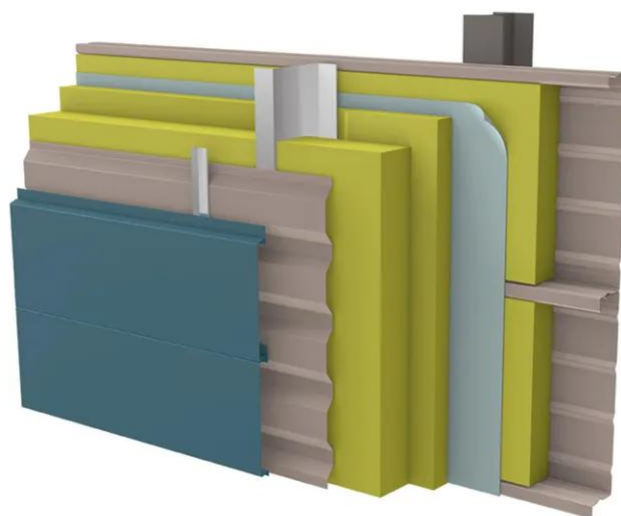
[Contact us](#)



•



•



Properties

Accessories

[Request informations](#)

Related products

[Request informations](#)

Technical documents

[Request informations](#)

Technical & commercial documentation

[Request informations](#)