

# Coque MD® Evolution

Coque MD is an open joints wall metallic cassette, reinforced with a polypropylene honeycomb and a back sheet of steel, intended for the realisation of flat facades. It is implemented through notches located in its vertical folds on supporting rails fitted with adjustable brackets.

- Can be used for cladding facades on masonry, concrete walls or timber frame houses, including blind walls or with openings
- Suitable for new construction as well as for rehabilitation
- Installation in seismic zone
- Hollow joints from 3 to 30 mm
- Very discreet bracket axis
- Invisible fixings
- Removable, a Coque MD panel located in the middle of the facade can be changed without removing a complete row of cassettes (or complete gable wall) with a vertical hollow joint of 10/15 mm and the locking of the cassette by setting opposition of the stirrups (Except by horizontal grid on 3 supports)
- Watch the assembling of a family product Coque MD in [video](#)

[Contact us](#)

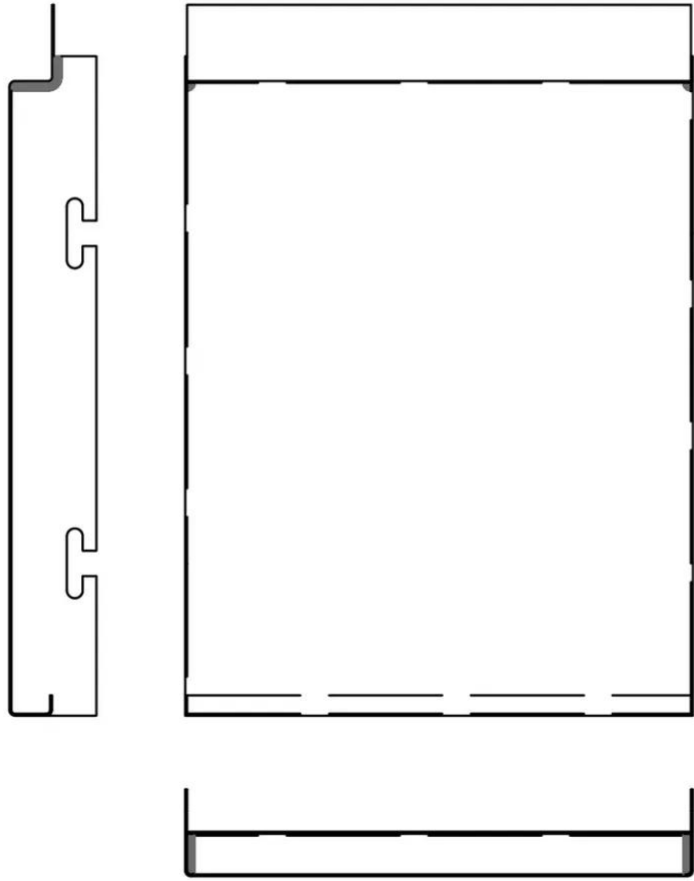


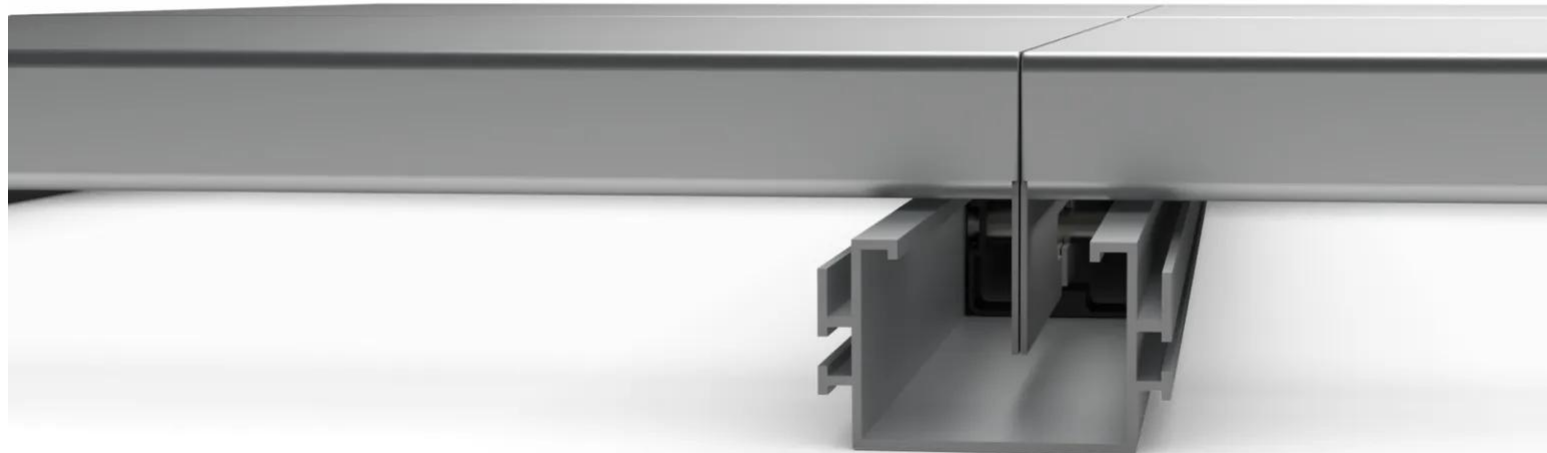
- 

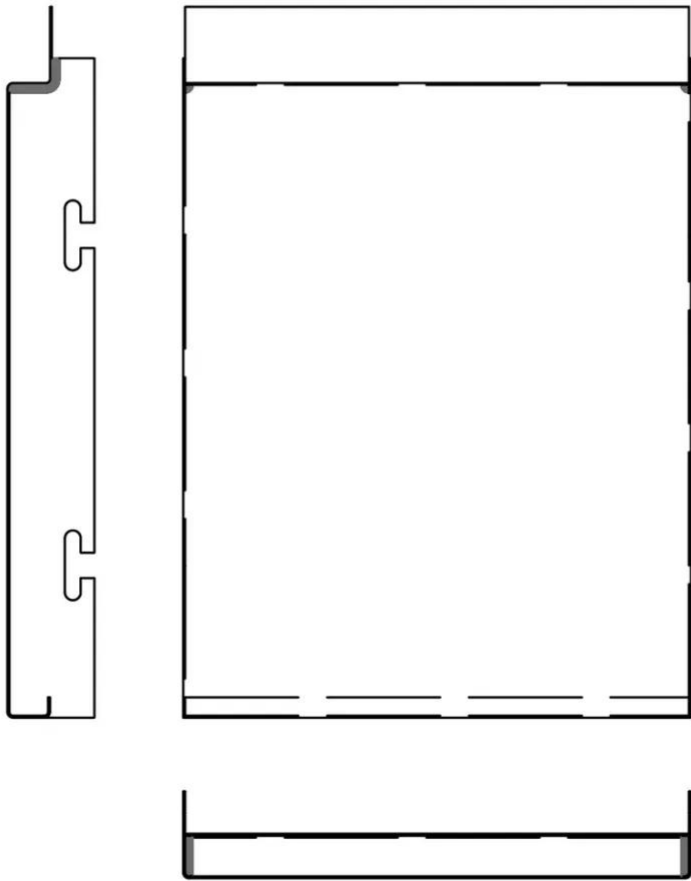


-









## Properties

## Accessories

[Request informations](#)

## Related products

[Request informations](#)

## Technical documents

[Request informations](#)

## Technical & commercial documentation

[Request informations](#)

## Related projects



## **Office - Saint-Pierre-du-Mont**

Office

France

Saint Pierre Dumont

6968 Topazio - 7035 Light grey - 9010 Pure white & RAL 7043

Hairexcel® & Hairplus®