

Coque SP

Coque SP is an open joints metallic cassette intended for the realisation of flat facades. It is implemented by interlocking and fixed on omegas.

- Can be used for cladding facades on masonry, concrete or timber frame houses, including blind walls or with openings
- Suitable for new construction as well as for rehabilitation
- Installation is done from bottom to top on vertical galvanised Omega-type steel frames steel 1.5 mm thick
- Hollow joint up to 20 mm
- In prepainted steel and stainless steel 1.5 mm thick & in aluminum 2 mm thick
- Height up to 1,000 mm for length up to 3,000 mm in steel or aluminum
- Height up to 2,000 mm for length up to 1,000 mm in steel
- Height up to 1,500 mm for length up to 1,000 mm in aluminum
- Hidden fixings
- Perforations on request (contact us)

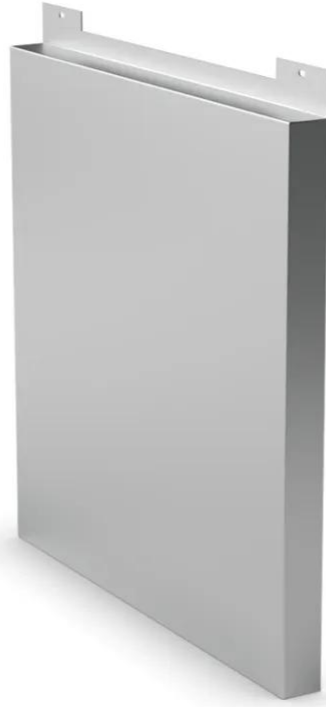
[Contact us](#)

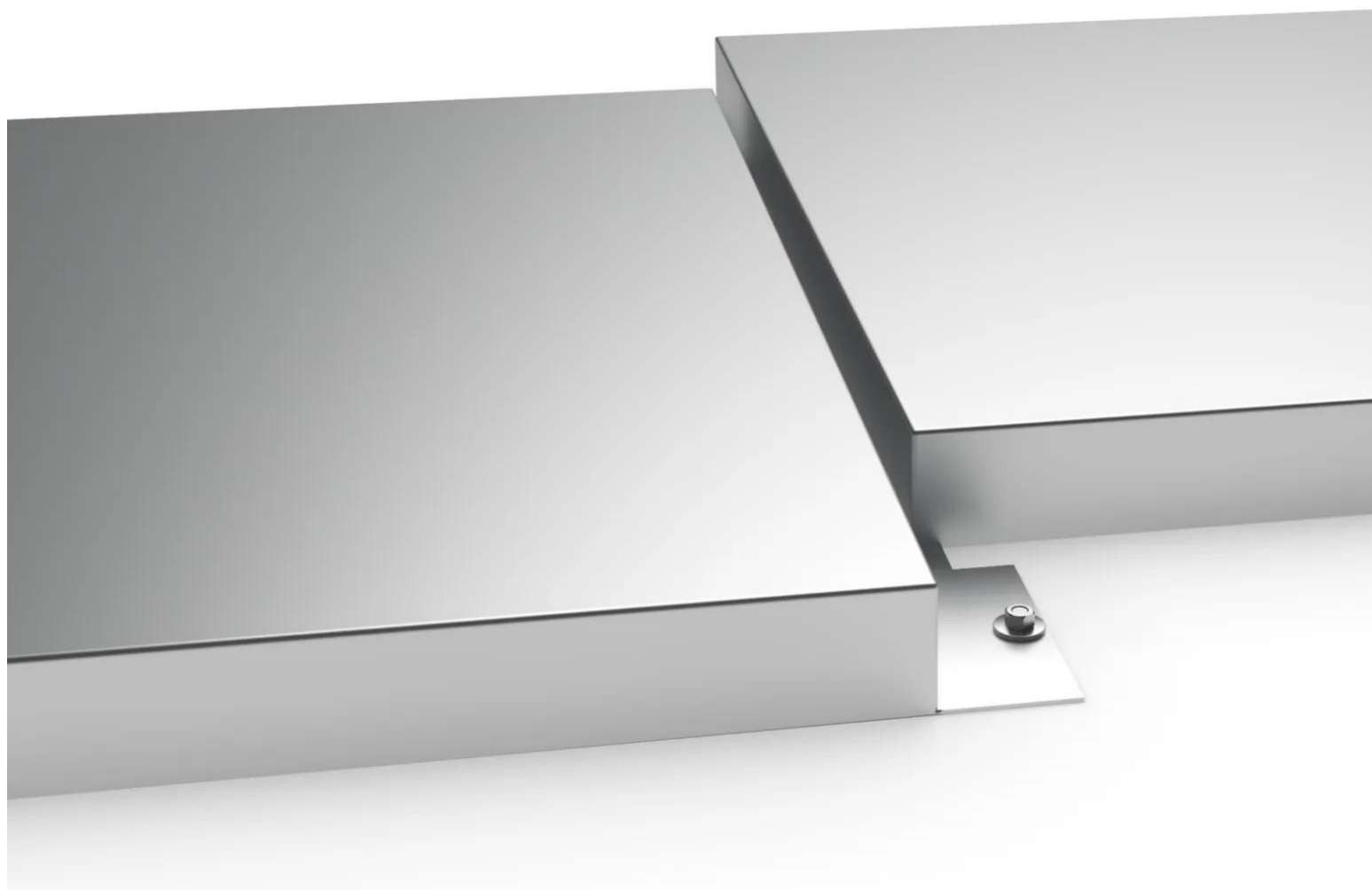
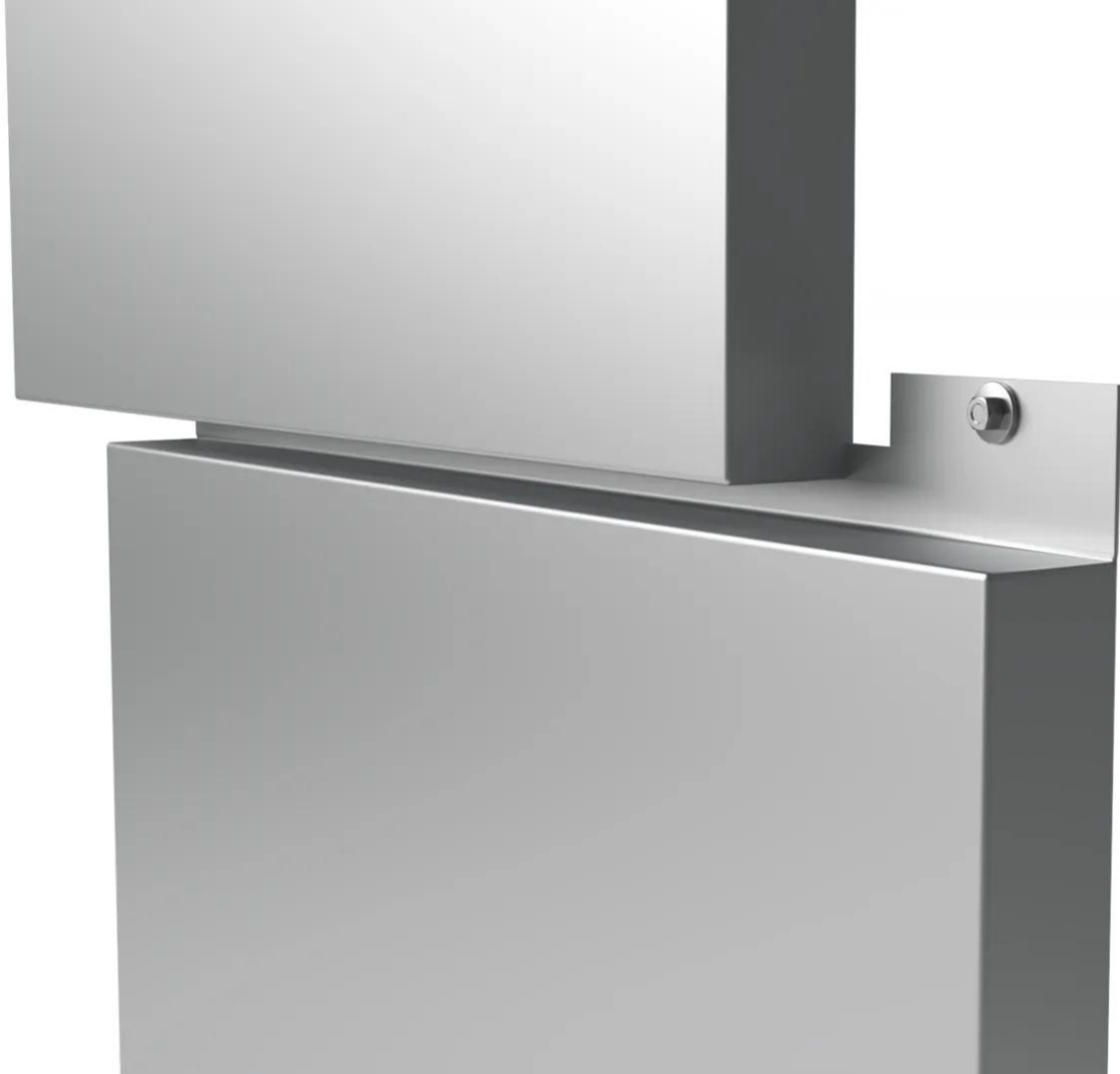


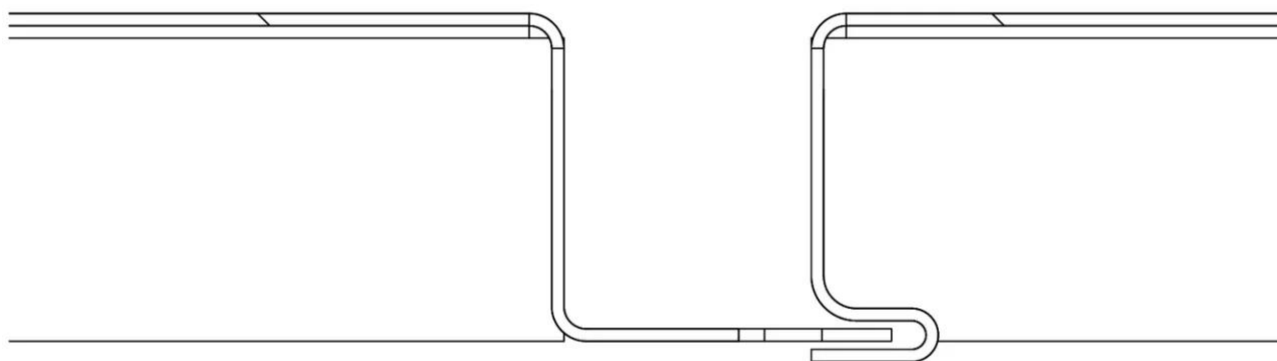
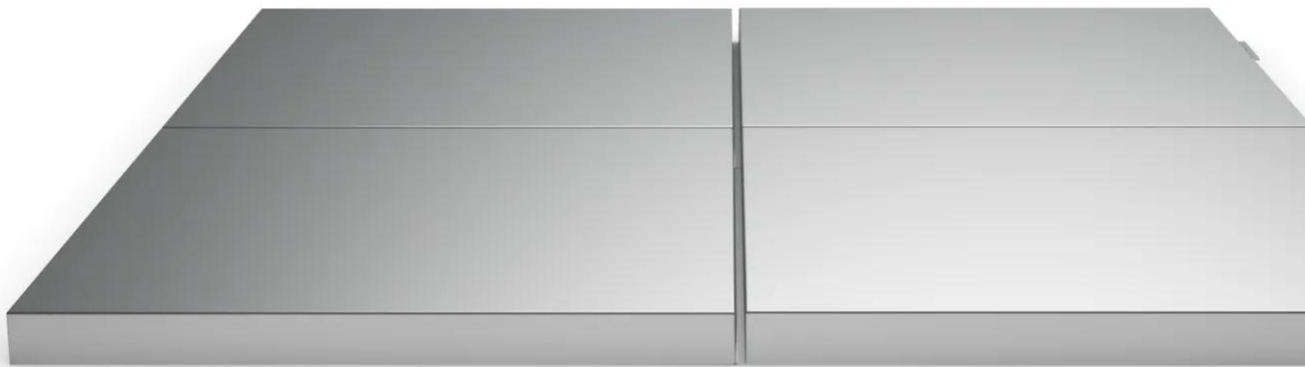
•

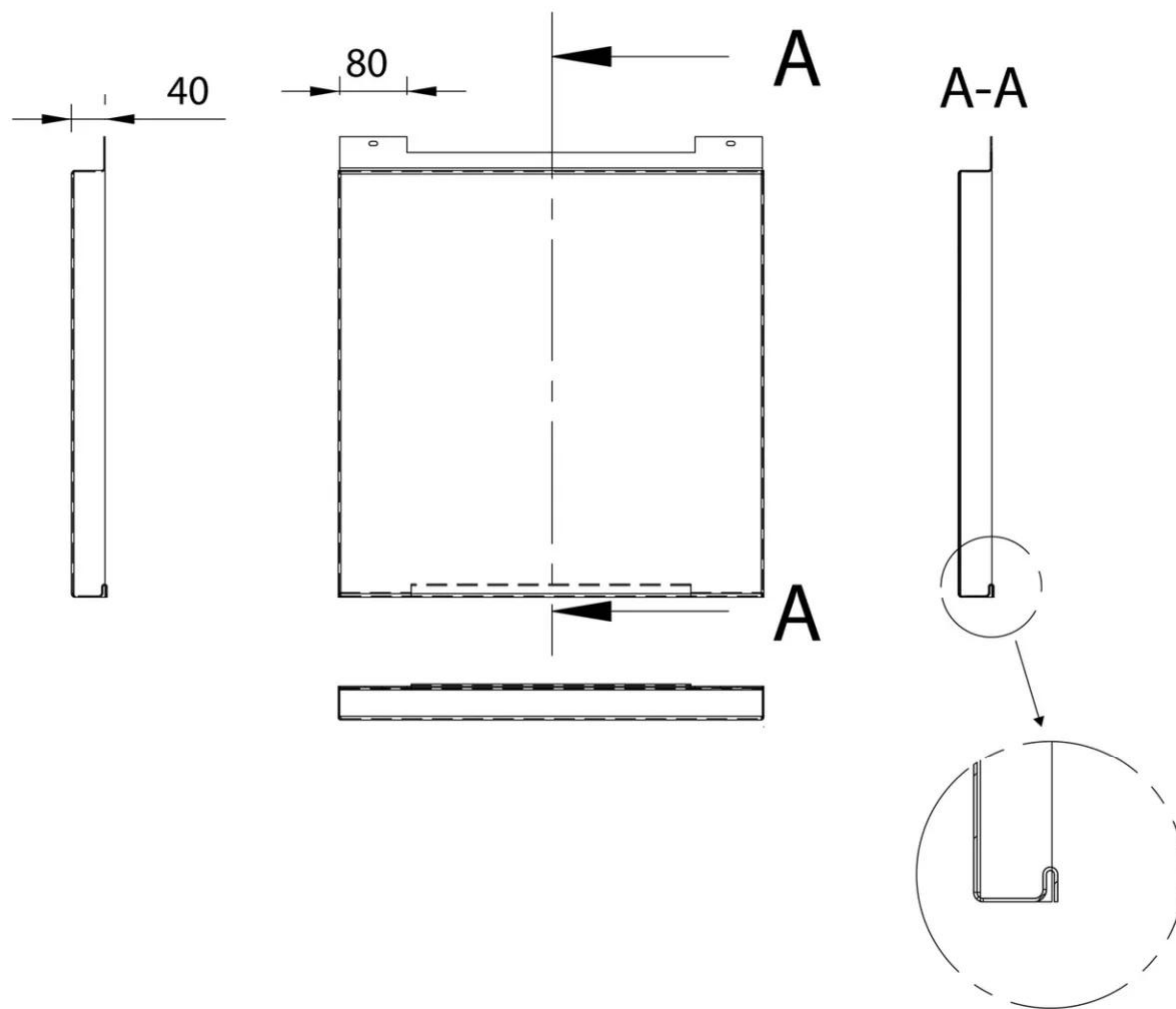


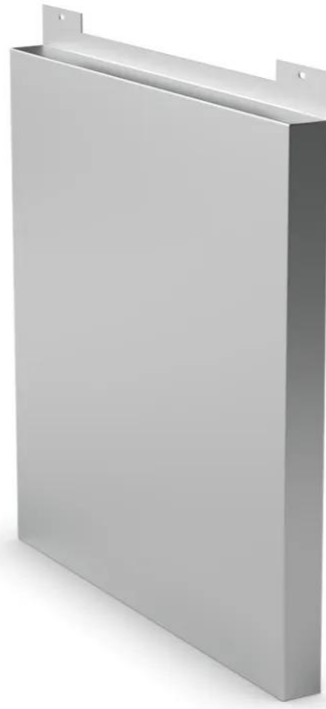
•

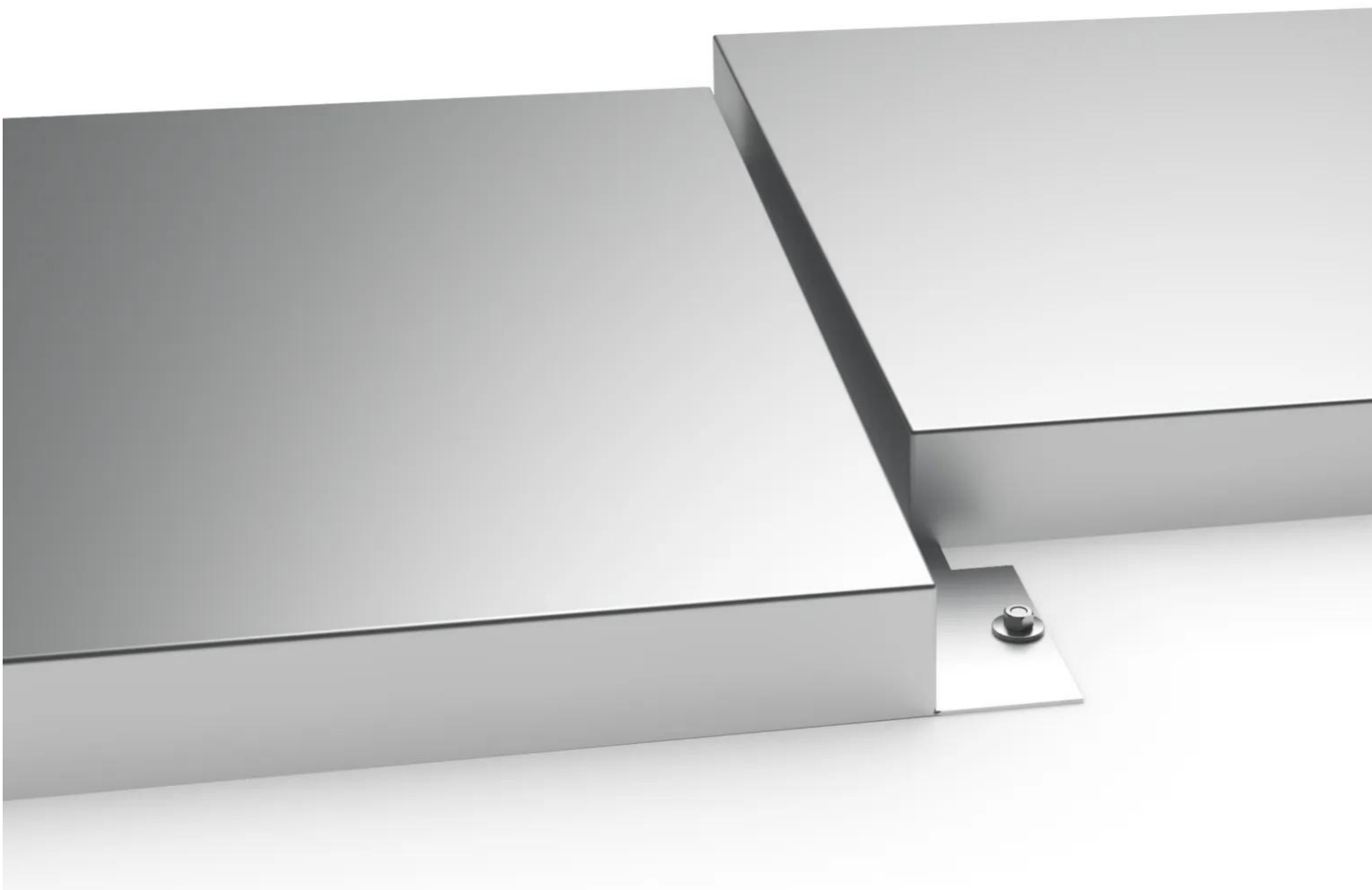
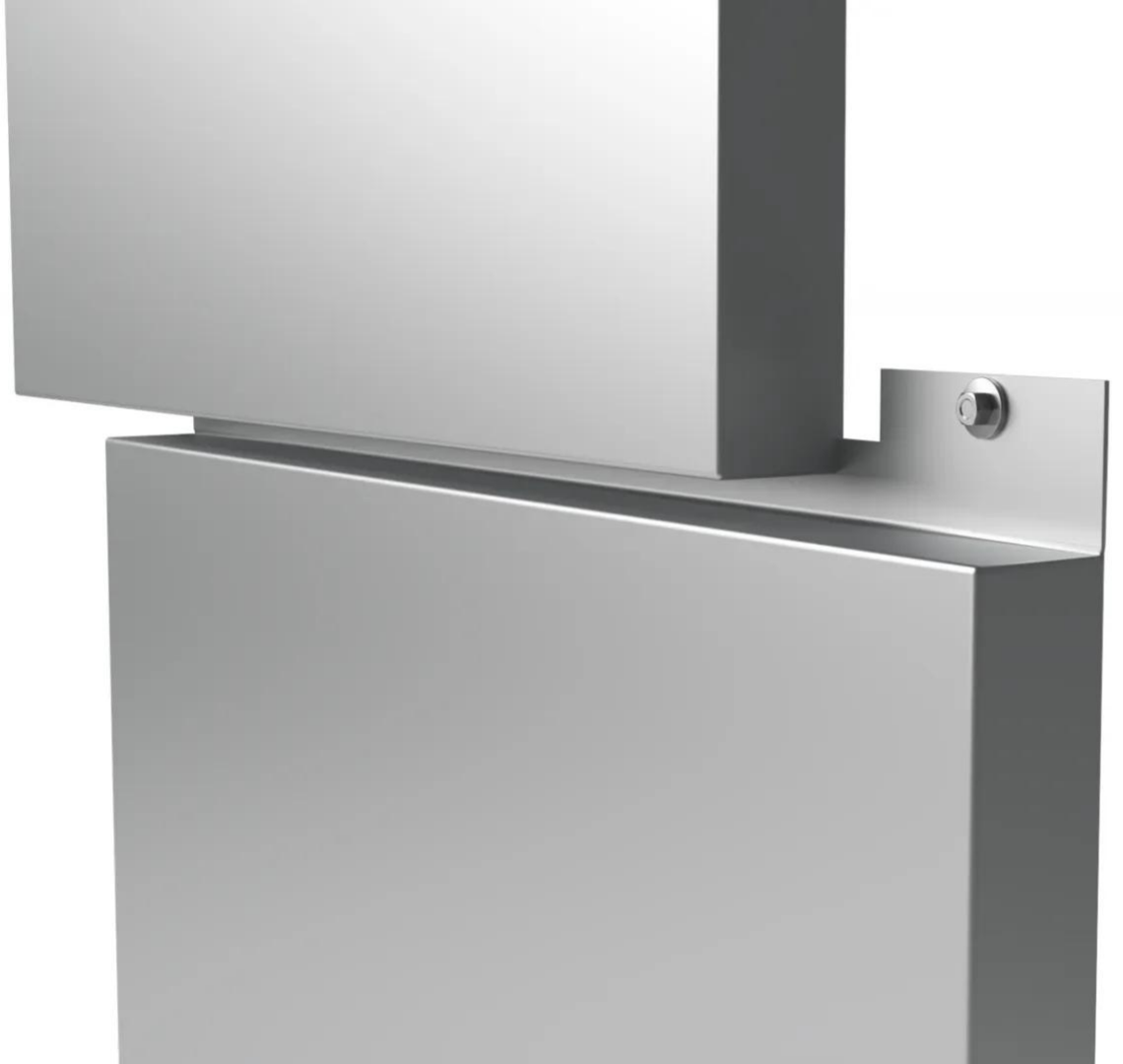


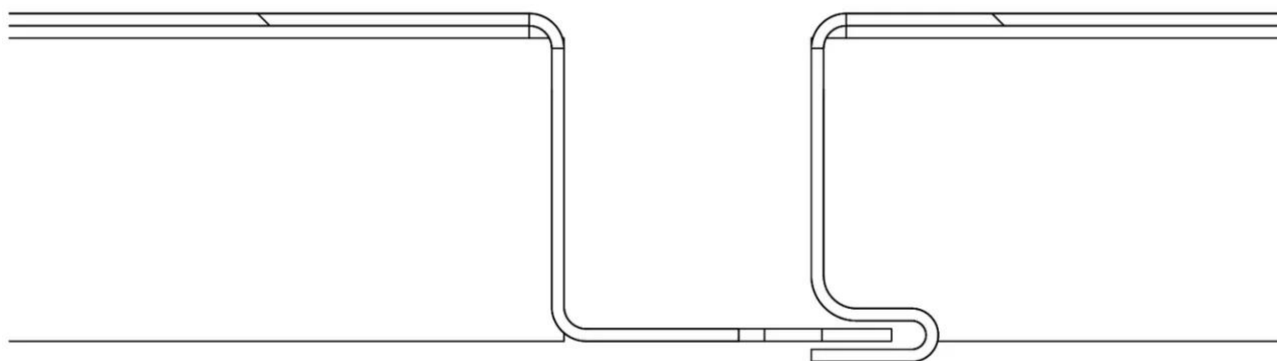
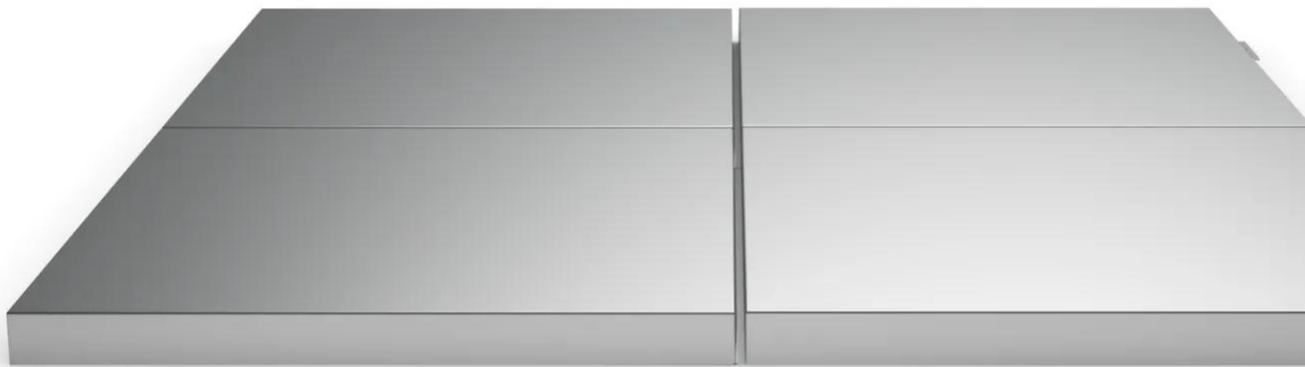


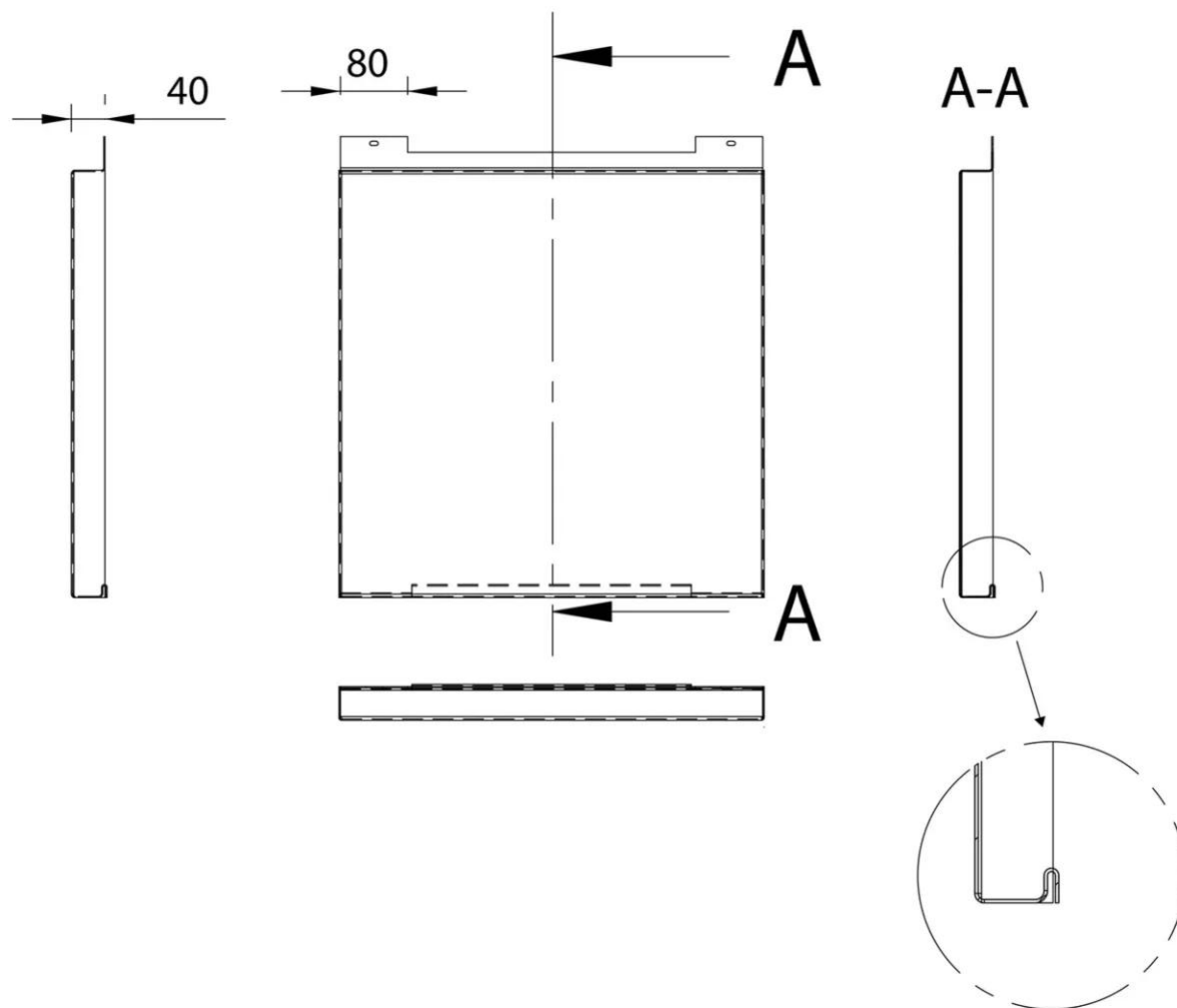












Properties

Accessories

[Request informations](#)

Related products

[Request informations](#)

Technical documents

[Request informations](#)

Technical & commercial documentation

[Request informations](#)