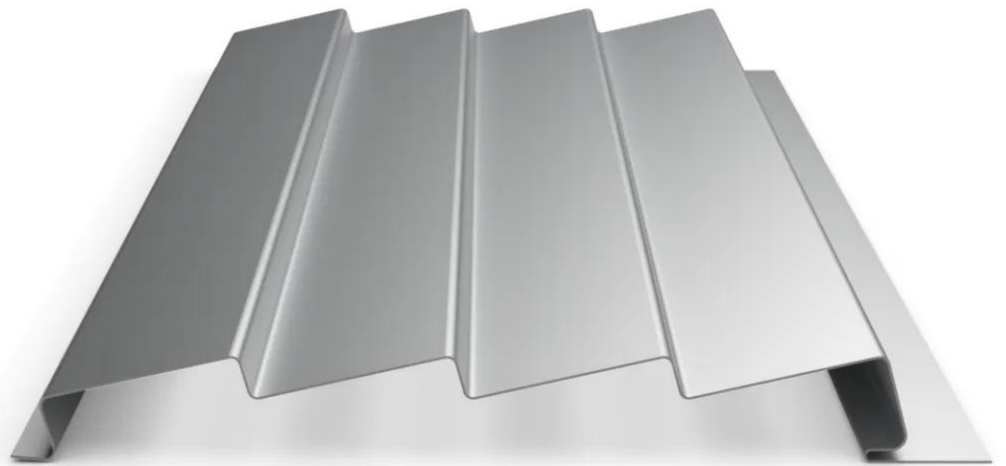


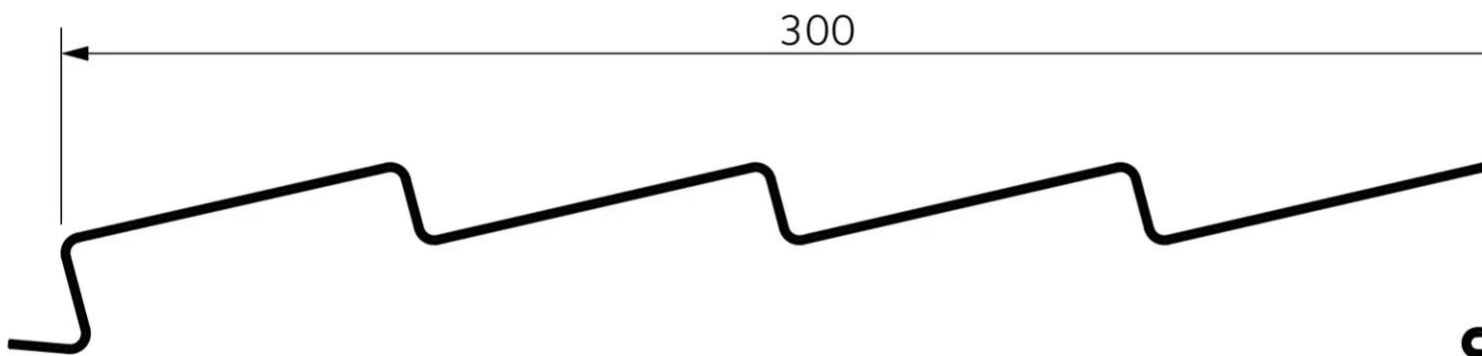
# Cailloc

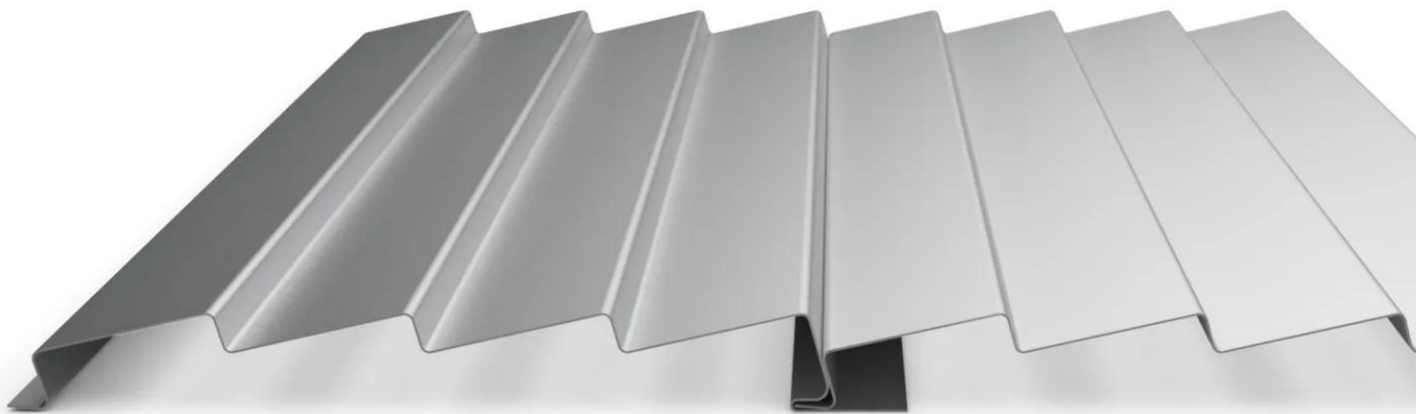
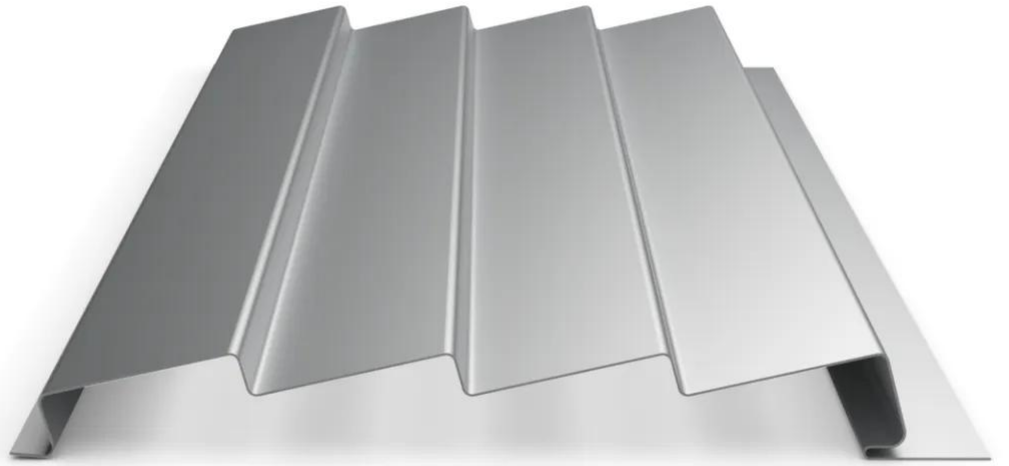
Cailloc is a metal facade and cladding siding. The geometry of the surface is dynamic thanks to the inclined folds. Combined with CRESCENDO sidings with small waves , Cailloc give a progressive rhythm to the facades.

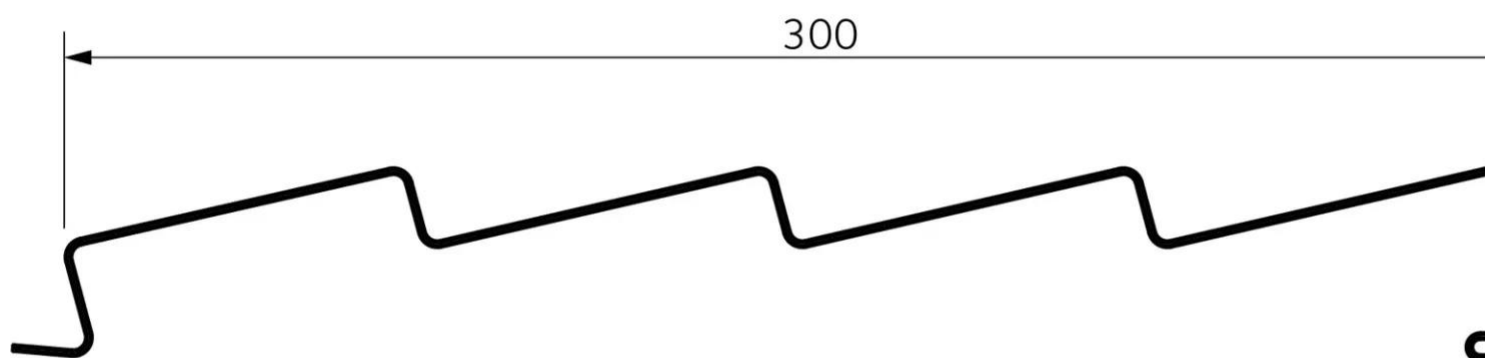
- Validated by CSTB, according "Cahier n°3747 May 2014"
- Materials: stainless or pre-painted galvanized steel 1 mm thick or pre-painted aluminium alloy 15/10 mm thick.
- Hidden fixations
- Width: 300 mm +/-1mm
- Height: 40 mm +/- 1mm
- Standard length: 1000mm to 4000mm maximum +0 / -3 mm
- Intended for wall cladding (vertical and horizontal) or double-skin external cladding walls ( vertical )
- Perforation on request
- Recommended maximum span is 1.50m between supports (steel material )

[Contact us](#)









## Properties

## Accessories

[Request informations](#)

## Related products

[Request informations](#)

## Technical documents

[Request informations](#)

## Technical & commercial documentation

[Request informations](#)