

## Trapeza® 5.183.39

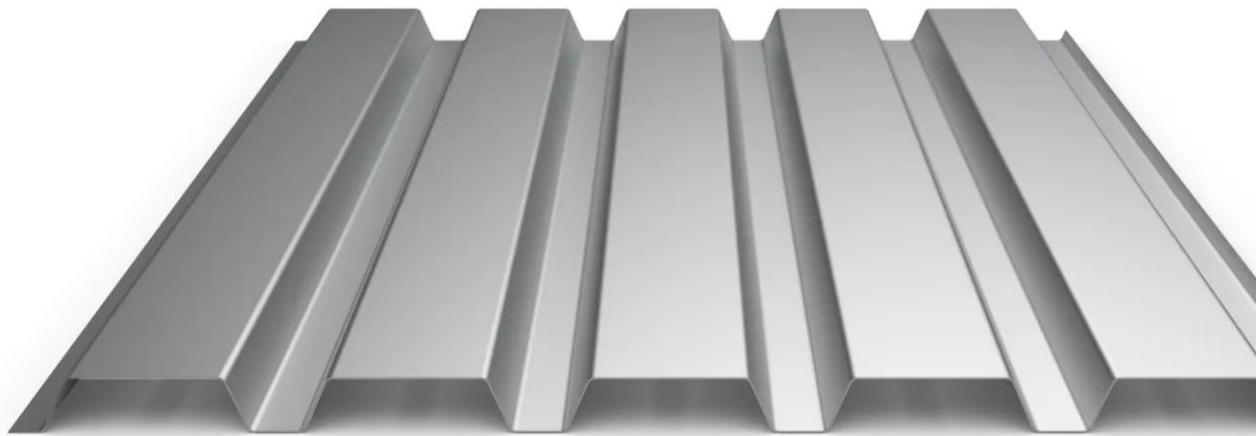
This wall trapezoidal profile has a cover width of 915 mm.

- Trapezoidal shape
- Vertical and horizontal installation
- 4 thicknesses available, from 0.63 to 1 mm
- Maximal length 16 000 mm
- Available in a wide range of colors and sustainable, design and technical organic coatings
- Realizable in Touch Gloss, Touch 2B & Touch Top stainless steel in thickness 0.80 mm and lengths from 2 m to 6.50 m
- Several types of perforation available for a use as sun screen: [contact us](#)
- Notch curving realizable in our workshop

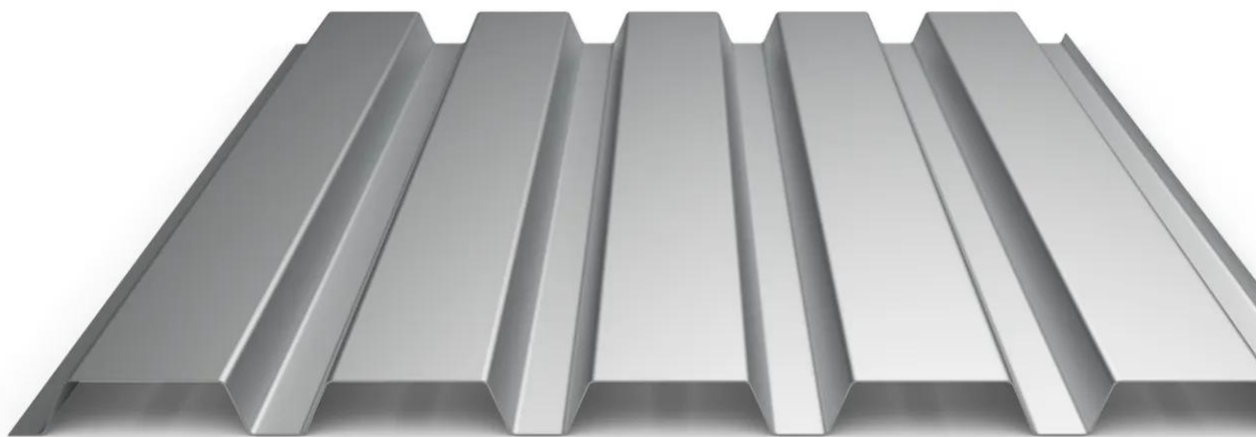
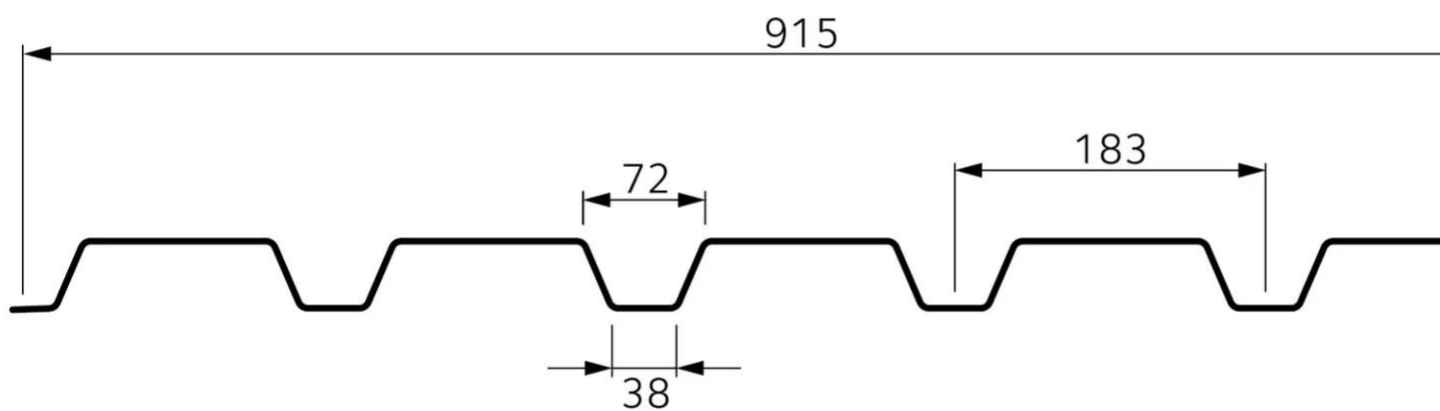
[Contact us](#)

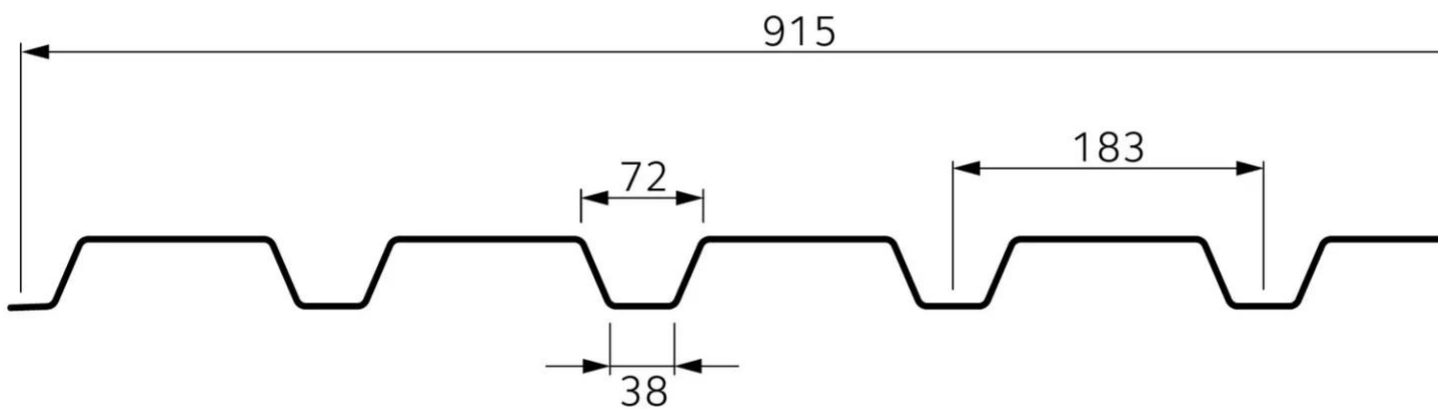


•



•





## Properties

## Accessories

[Request informations](#)

## Related products

[Request informations](#)

## Technical documents

[Request informations](#)

## Technical & commercial documentation

[Request informations](#)

## Related projects



# **ITER - Saint-Paul-lez-Durance**

Industrial & Logistic

France

St. Paul-lez-Durance

6722 Onyx & Touch gloss

Hairexcel® & stainless steel