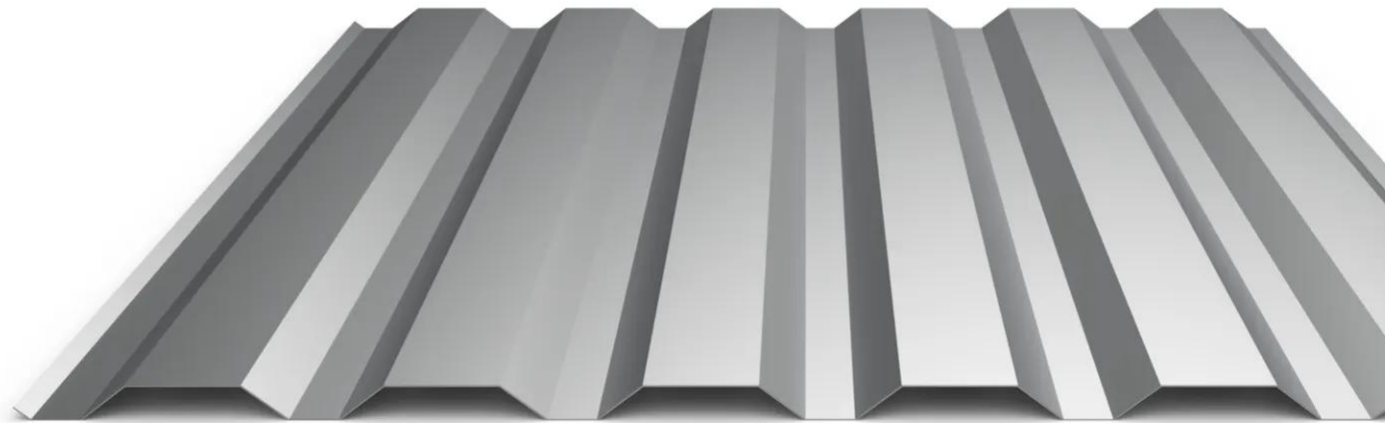


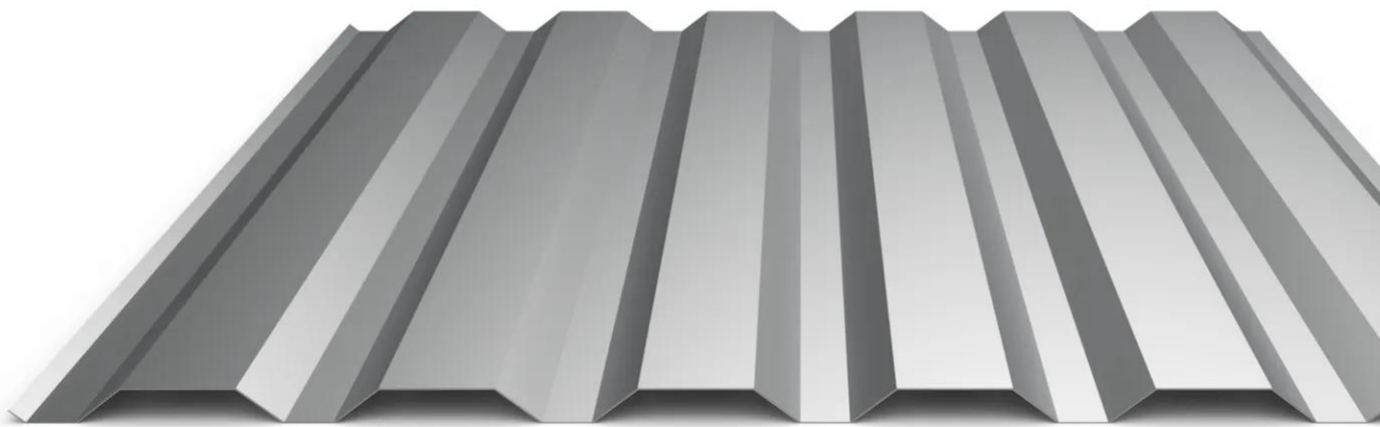
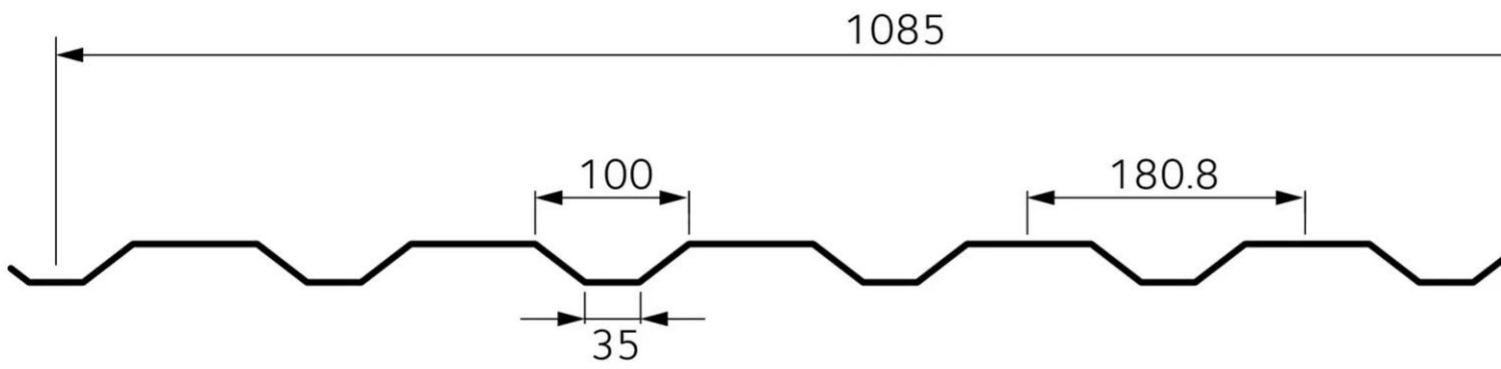
Trapeza® 6.180.25

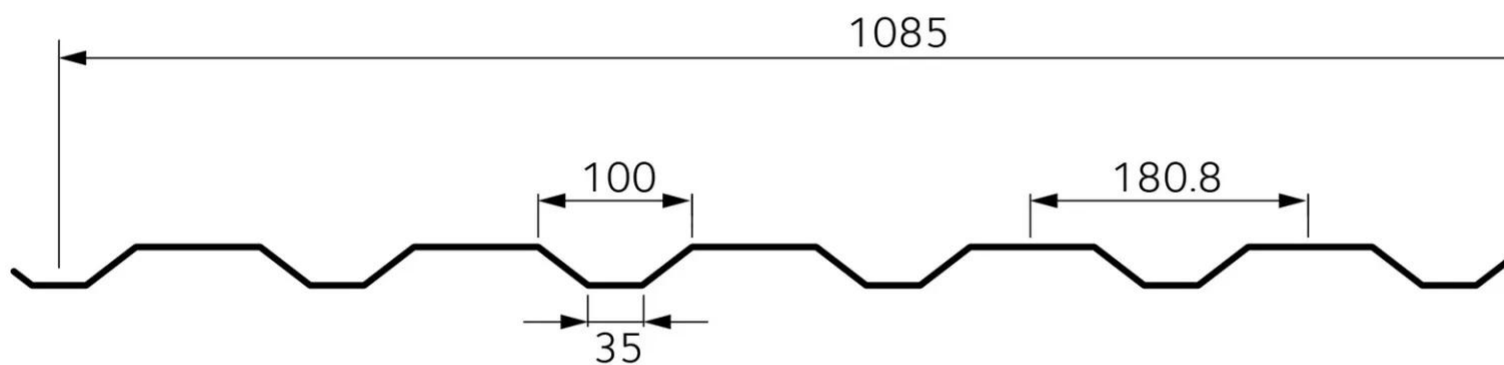
This wall trapezoidal profile has a cover width of 1 085 mm.

- Trapezoidal shape
- Vertical and horizontal installation
- 4 thicknesses available, from 0.63 to 1.00 mm
- Maximal length 13 000 mm
- Notch curving realizable in our workshop

[Contact us](#)







Properties

Accessories

[Request informations](#)

Related products

[Request informations](#)

Technical documents

[Request informations](#)

Technical & commercial documentation

[Request informations](#)