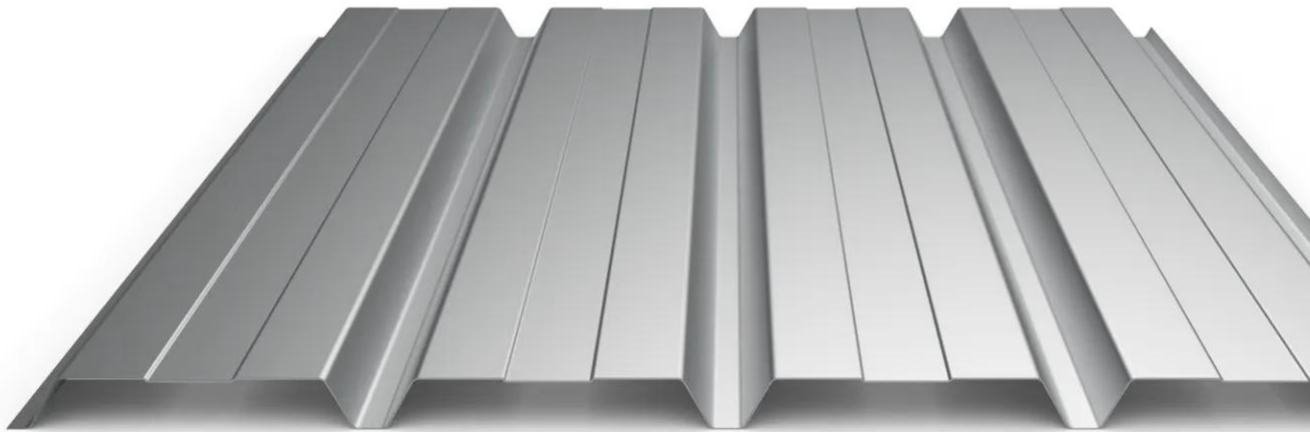


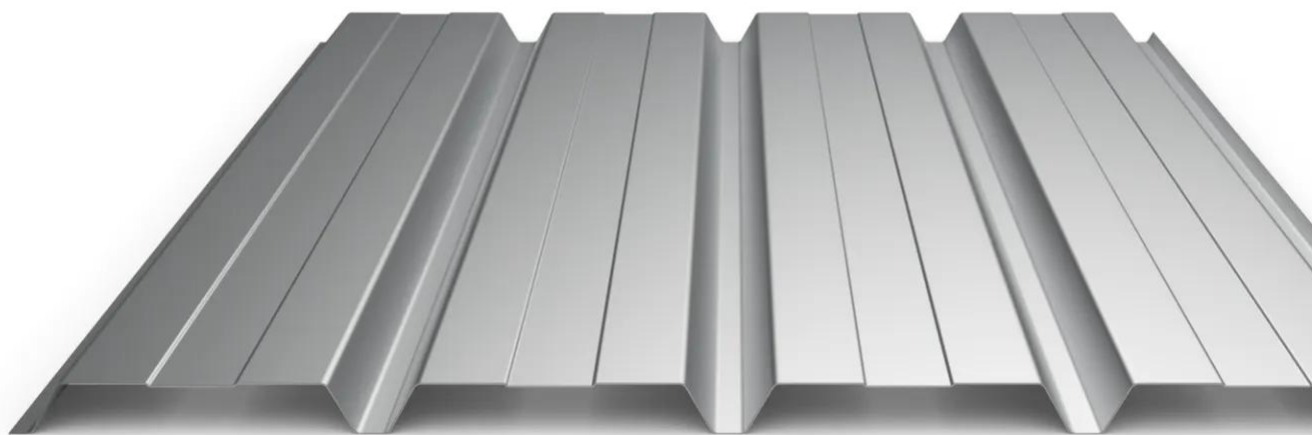
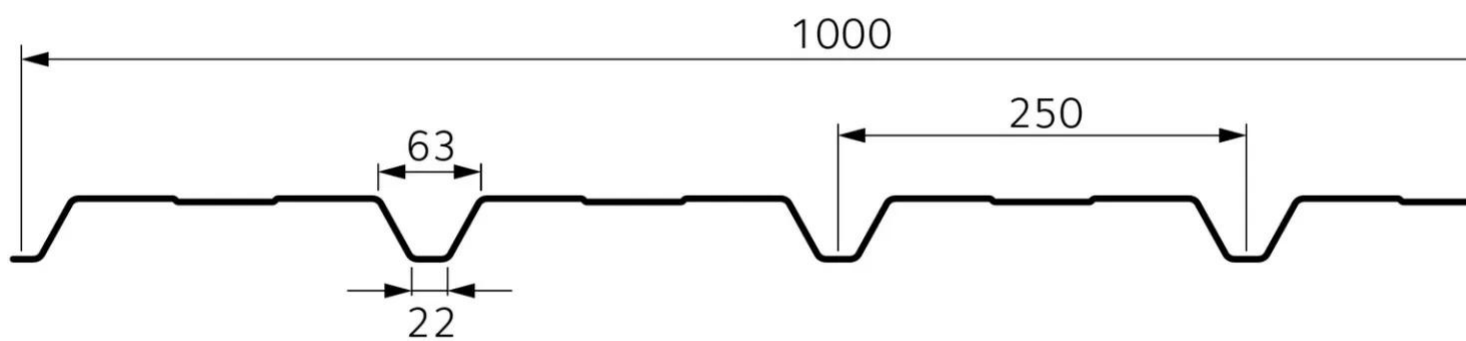
## Trapeza® 4.250.36

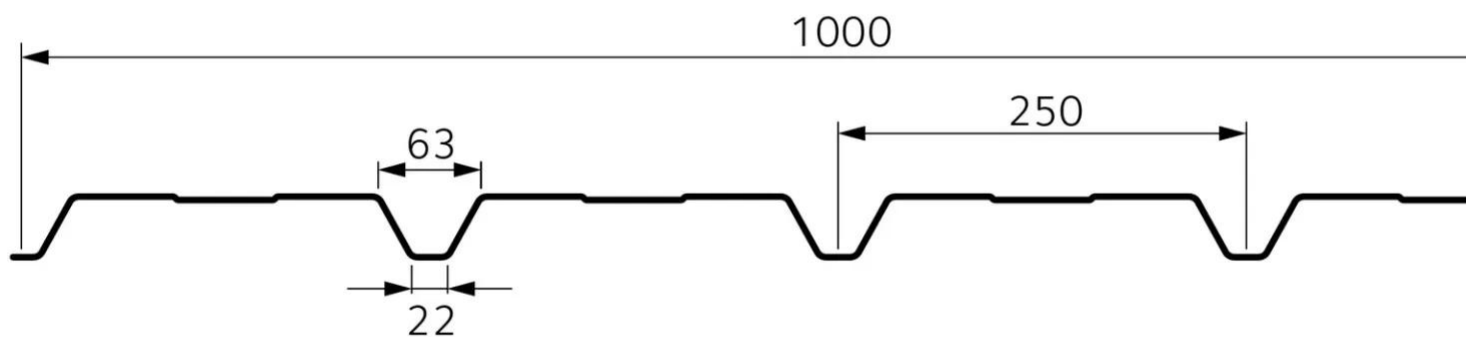
This wall trapezoidal profile has a cover width of 1 000 mm.

- Trapezoidal shape
- Vertical and horizontal installation
- 5 thicknesses available, from 0.63 to 1.25 mm
- Maximal length 13 000 mm
- Available in a wide range of colors and sustainable, design and technical organic coatings
- Realizable in Touch Gloss, Touch 2B & Touch Top stainless steel in thickness 0.80 mm and lengths from 2 m to 6.50 m
- Several types of perforation available for a use as sun screen: [contact us](#)

[Contact us](#)







## Properties

## Accessories

[Request informations](#)

## Related products

[Request informations](#)

## Technical documents

[Request informations](#)

## Technical & commercial documentation

[Request informations](#)