

## Frigotherm® iQ+

Frigotherm® iQ+ is a sandwich panel of iQ+ System® range committing to improving the performance of buildings and their environmental footprint. This insulated panel with a core made of polyisocyanurate foam iQ+ with enhanced thermal performance and prepainted steel facings is designed for refrigerated rooms or rooms with controlled atmosphere (-40°C /+ 40°C).

- Attractive lambda of 0.018W/m.K
- Heat transmission Uc: up to 0.09W/m².K
- Reaction to fire: B-s1,d0
- Steel/polyisocyanurate foam sandwich panels for non-load vertical walls and ceilings, delivered according to the desired length
- Several technical solutions for facings available according to applications and foodstuffs requirements (stainless steel, PET coating ...)
- The introduction of inserts, sheet removal or sheaths is possible
- The grouting finish provides all the desired performance for watertightness, airtightness, water vapor diffusion and is adapted to hygiene and cleaning requirements
- Width: 1000, 1100 or 1150mm

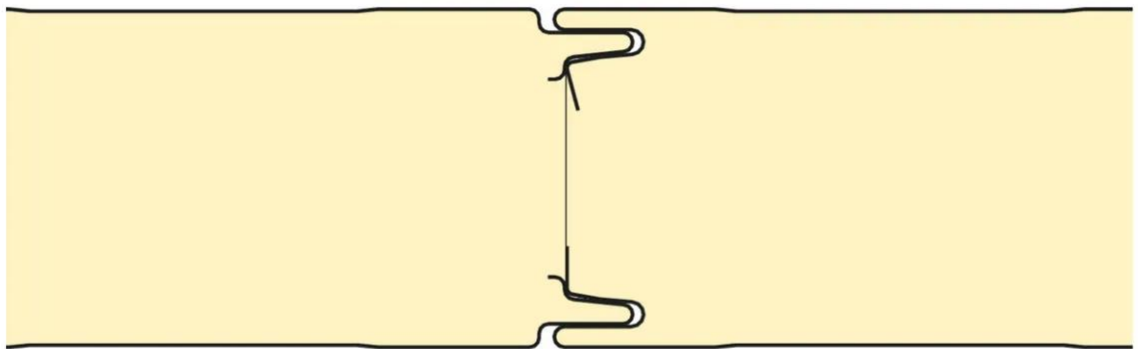
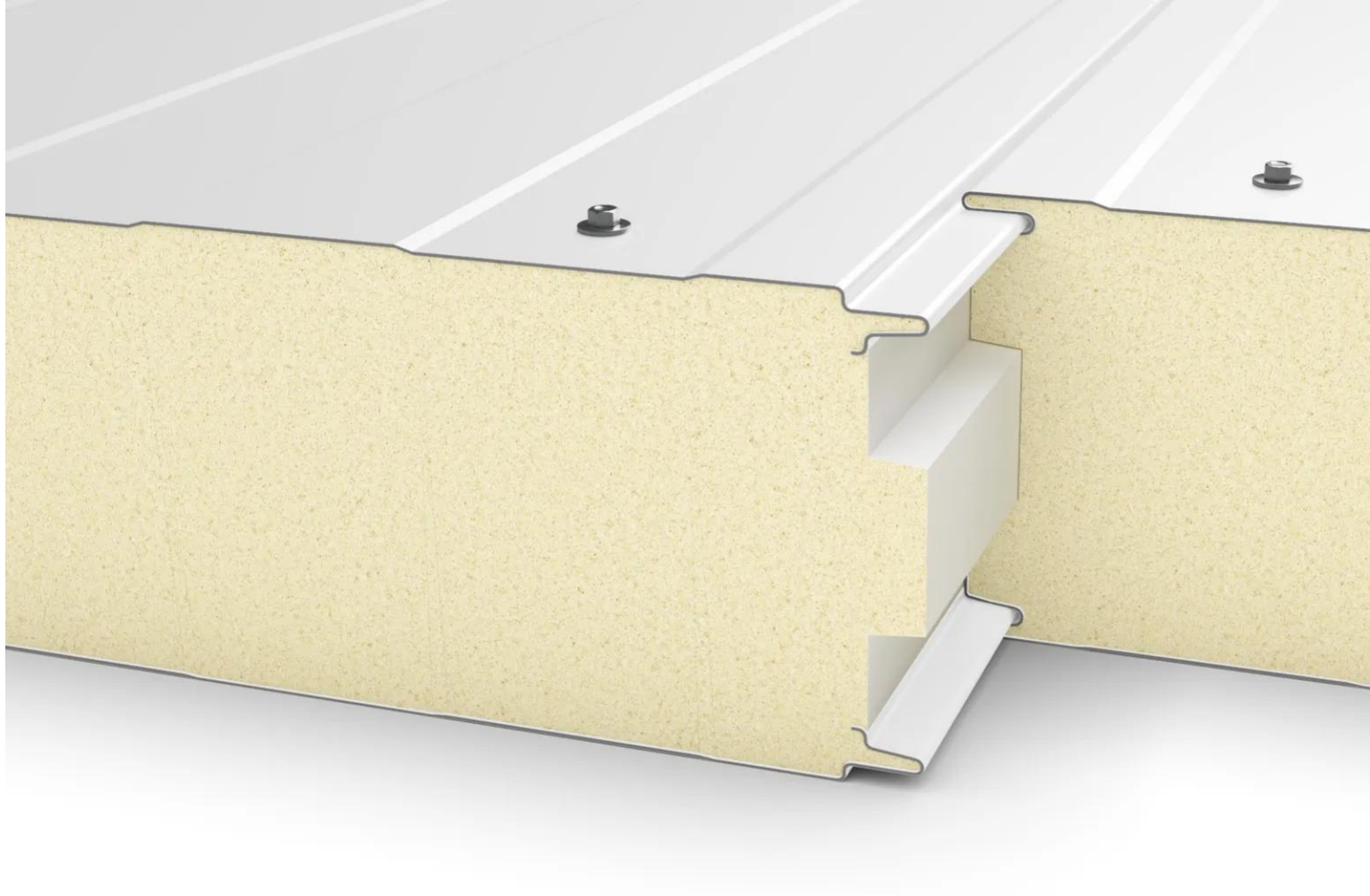
[Contact us](#)

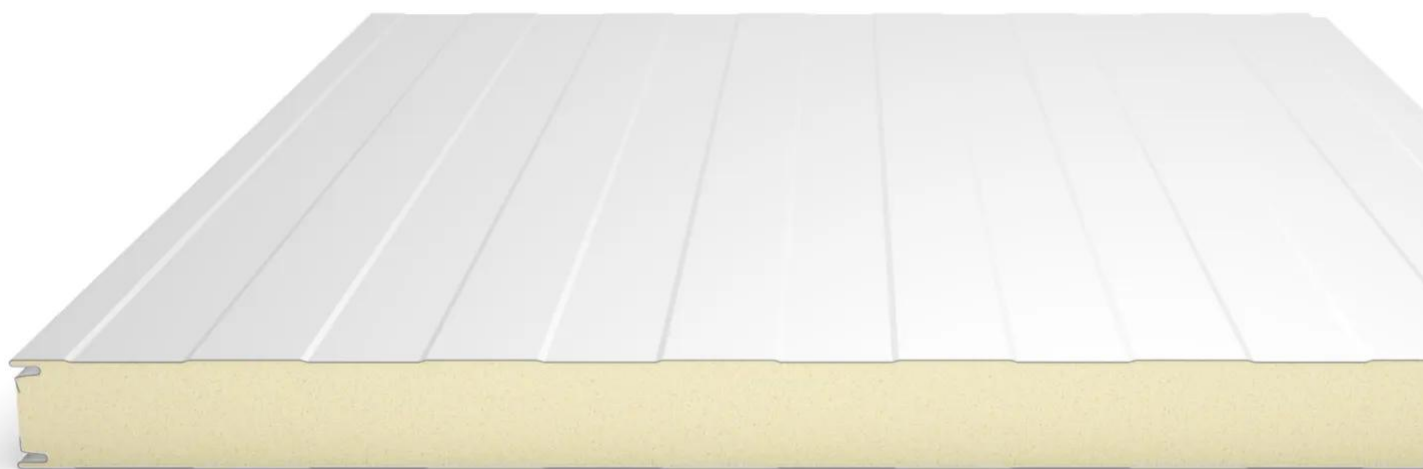


•



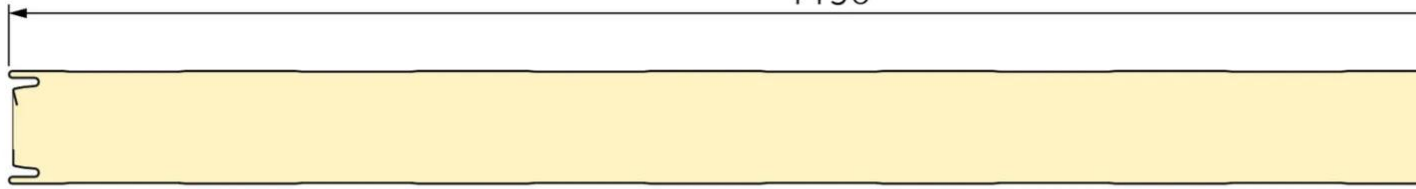
•





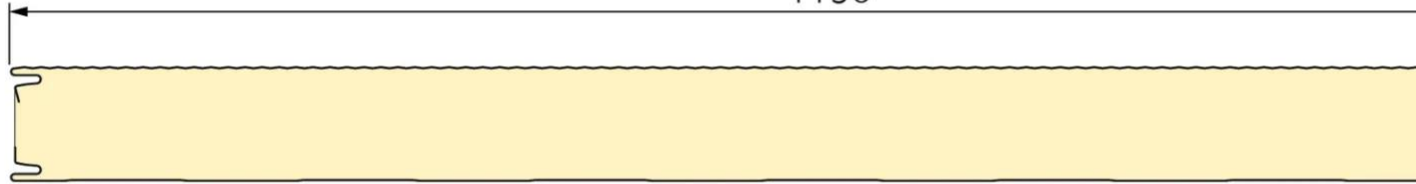
Frigothemr nervure

1150



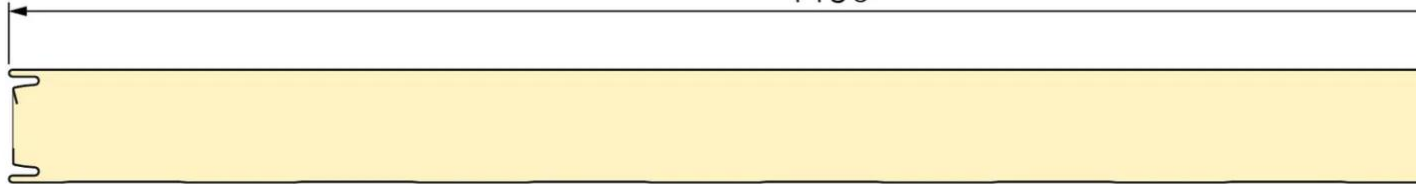
Frigothemr micronervure

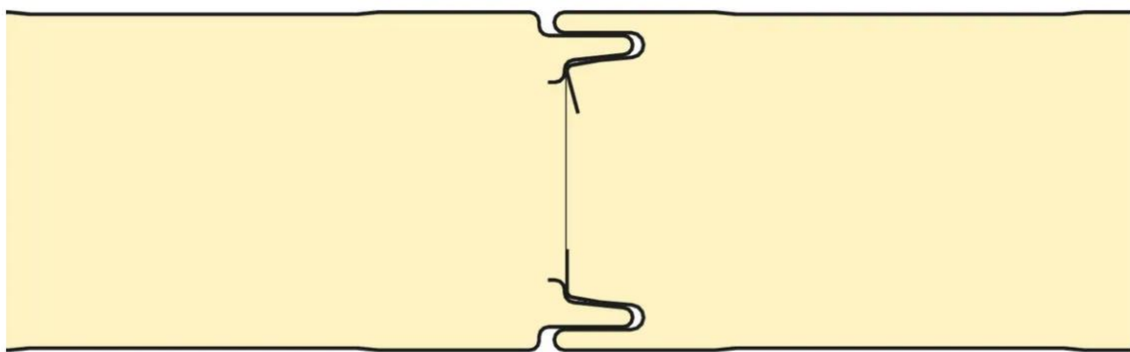
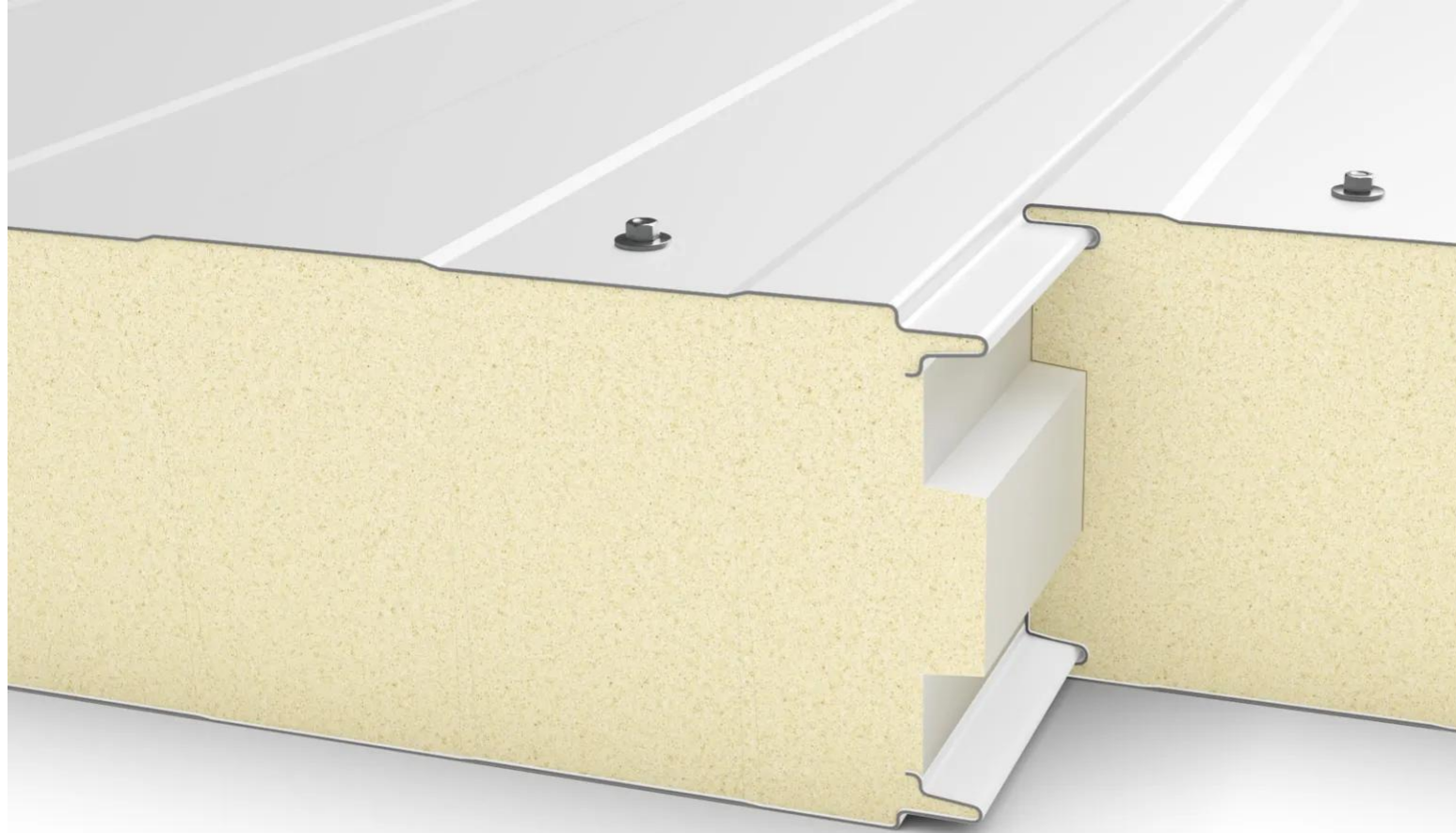
1150

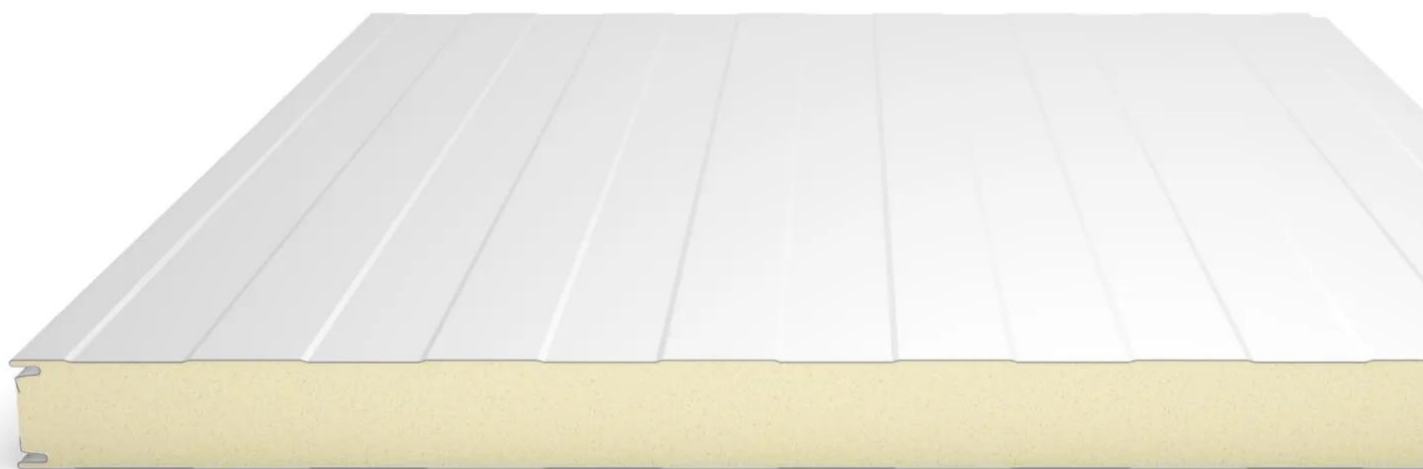


Frigothemr liss

1150



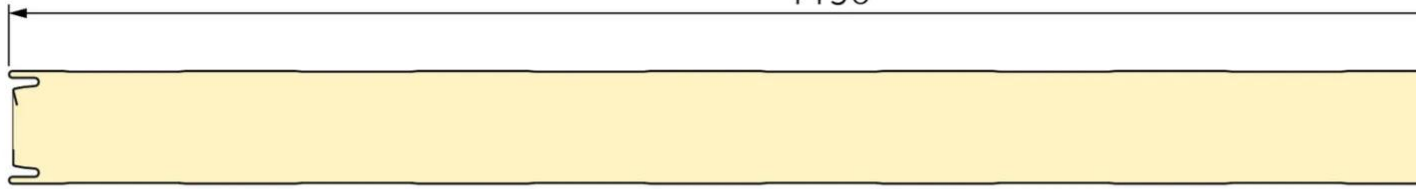






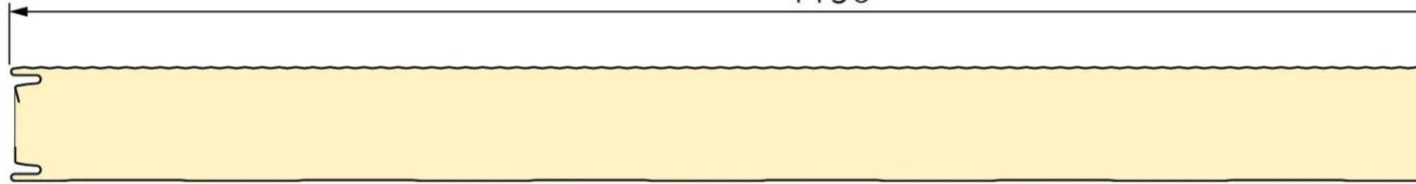
Frigotherm nervure

1150



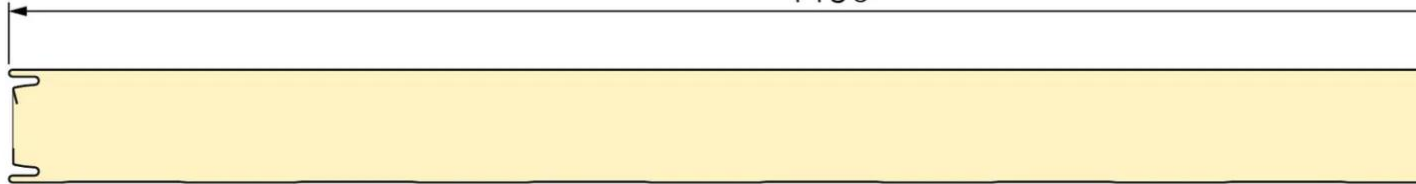
Frigotherm micronervure

1150



Frigotherm liss

1150



## Properties

## Accessories

[Request informations](#)

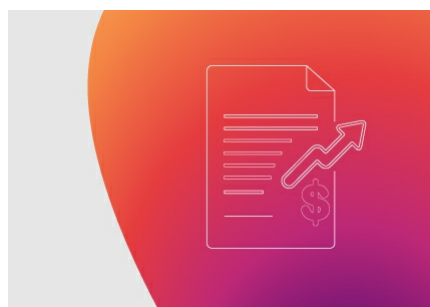
## Related products

[Request informations](#)

## Technical documents

[Request informations](#)

## Technical & commercial documentation



Frigotherm® & FrigoTherm® iQ+

[View document](#)