

Frigotherm®

Frigotherm® is a visible fixings insulated composite panel with a core made of polyisocyanurate PIR and prepainted steel facings for refrigerated rooms or rooms with controlled atmosphere (-40°C /+ 40°C).

- Steel/polyisocyanurate foam sandwich panels for non-load vertical walls and ceilings, delivered according to the desired length
- Several technical solutions for facings available according to applications and foodstuffs requirements (stainless steel, PET coating ...)
- The introduction of inserts, sheet removal or sheaths is possible
- The grouting finish provides all the desired performance for watertightness, airtightness, water vapor diffusion and is adapted to hygiene and cleaning requirements
- Heat transmission U_c : up to $0.11W/m^2.K$
- ACERMI certification
- Reaction to fire B-s1,d0
- FM Certification 4880 & 4881
- Width: 1000, 1100 or 1150mm
- Double joints system for thicknesses up to 100 mm
- BIM object available [here](#)

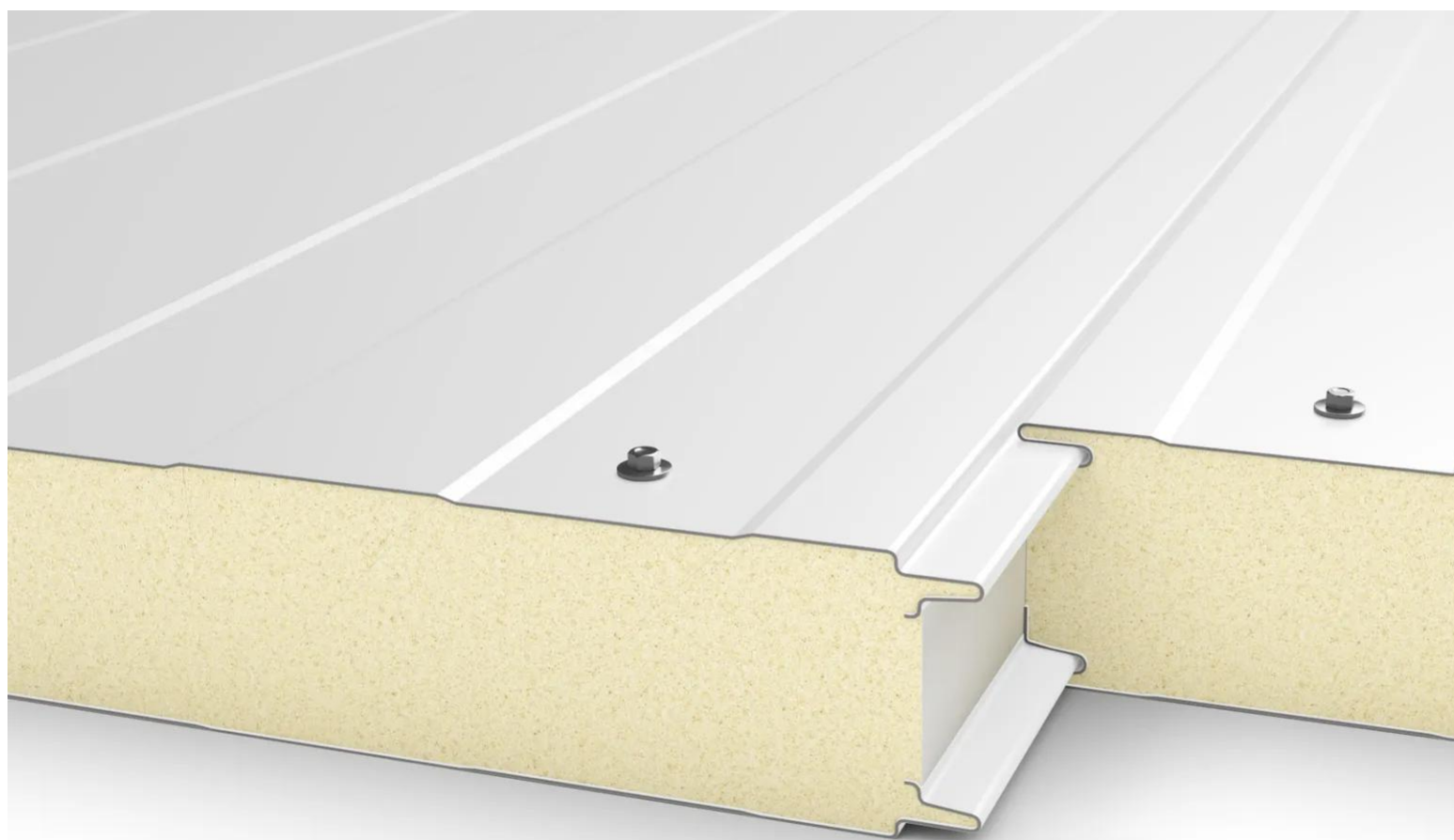
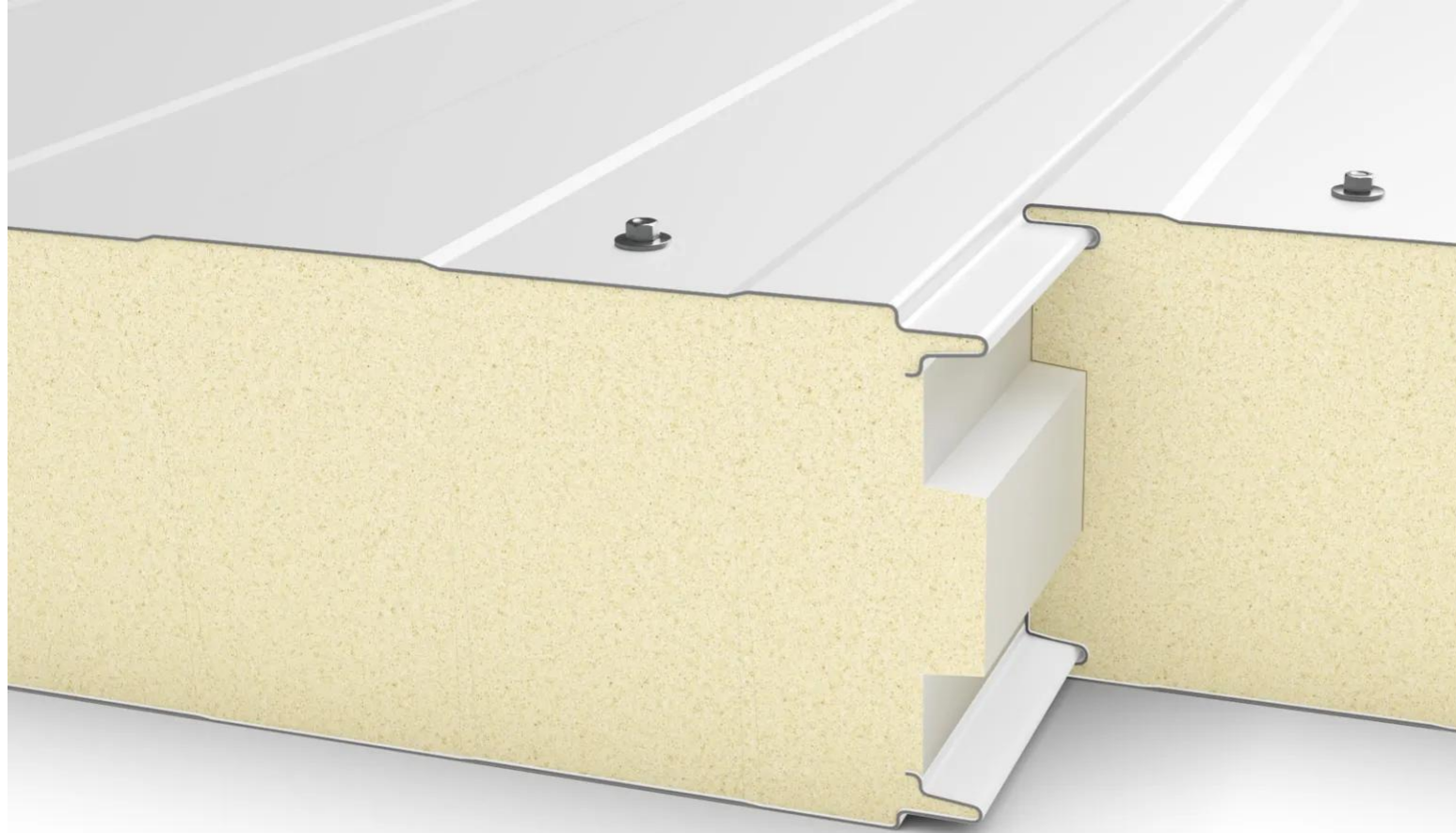
[Contact us](#)

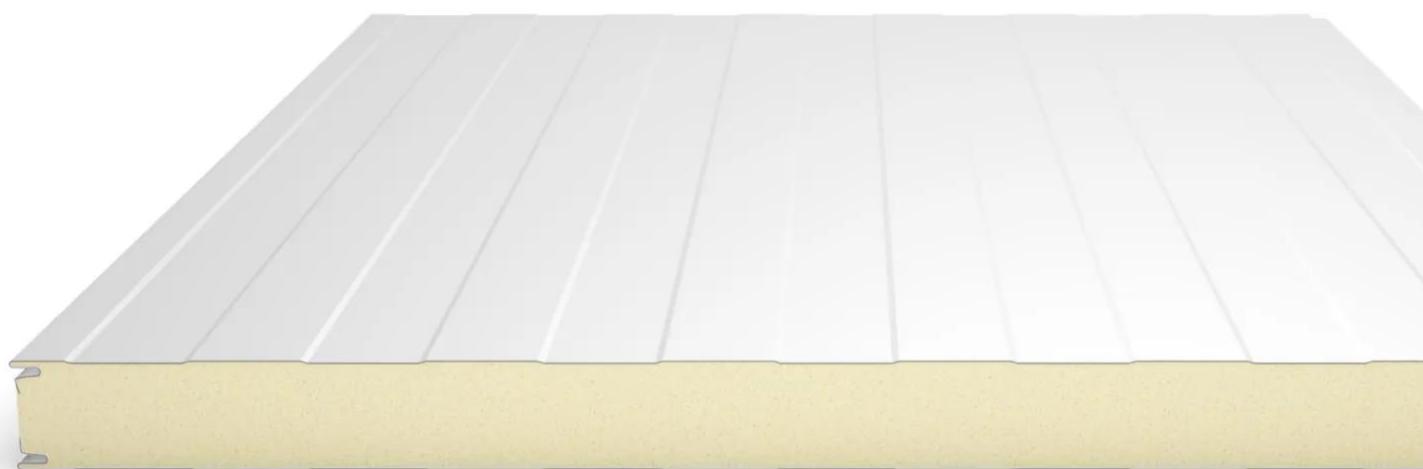
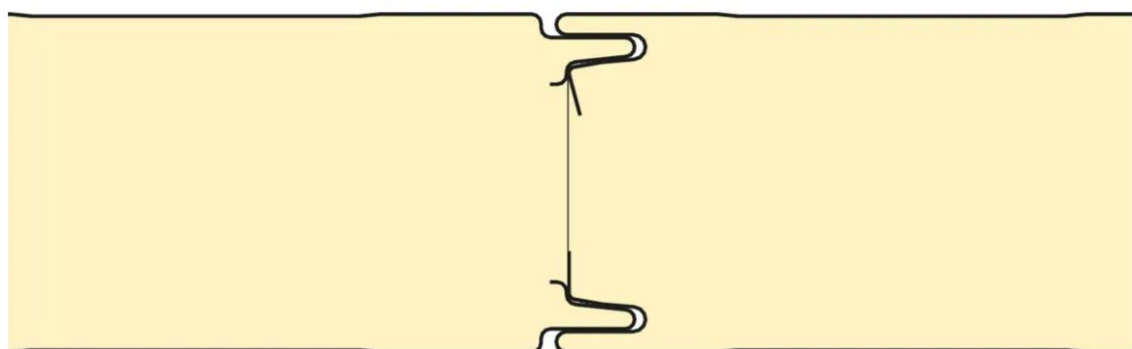


•

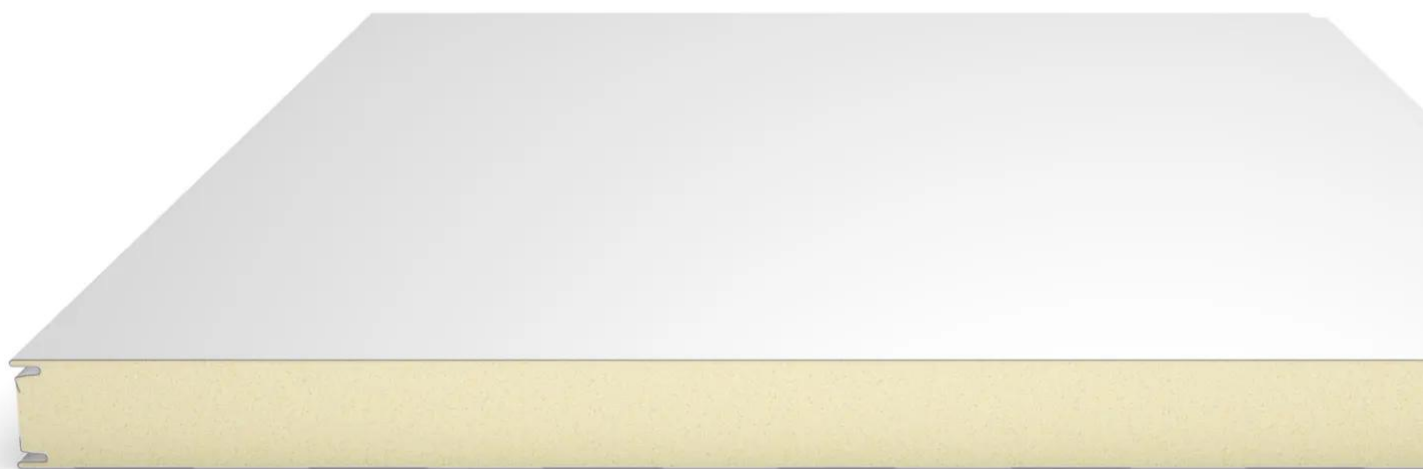


•



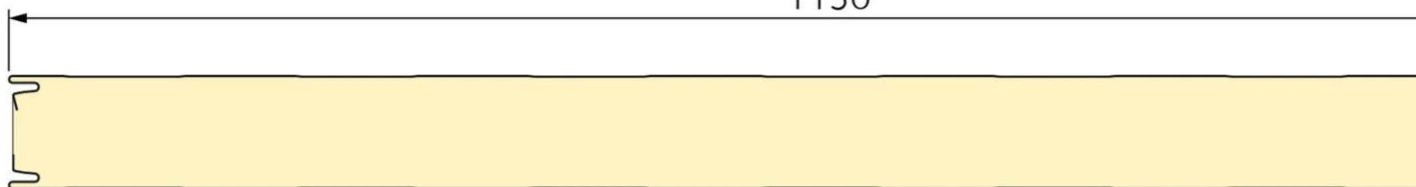






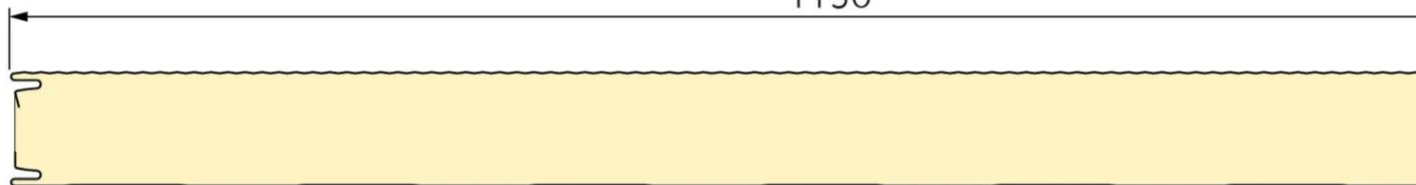
Frigotherrm nervure

1150



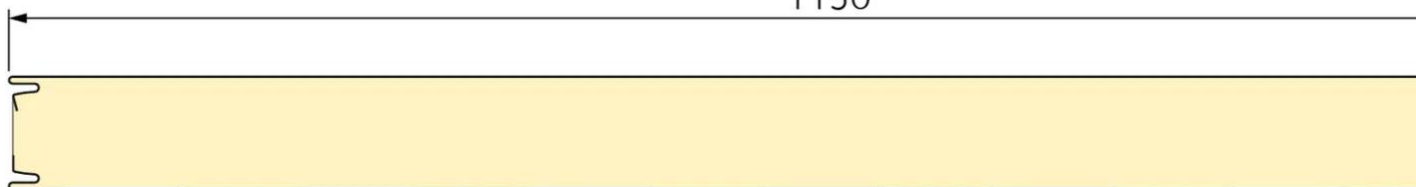
Frigotherrm micronervure

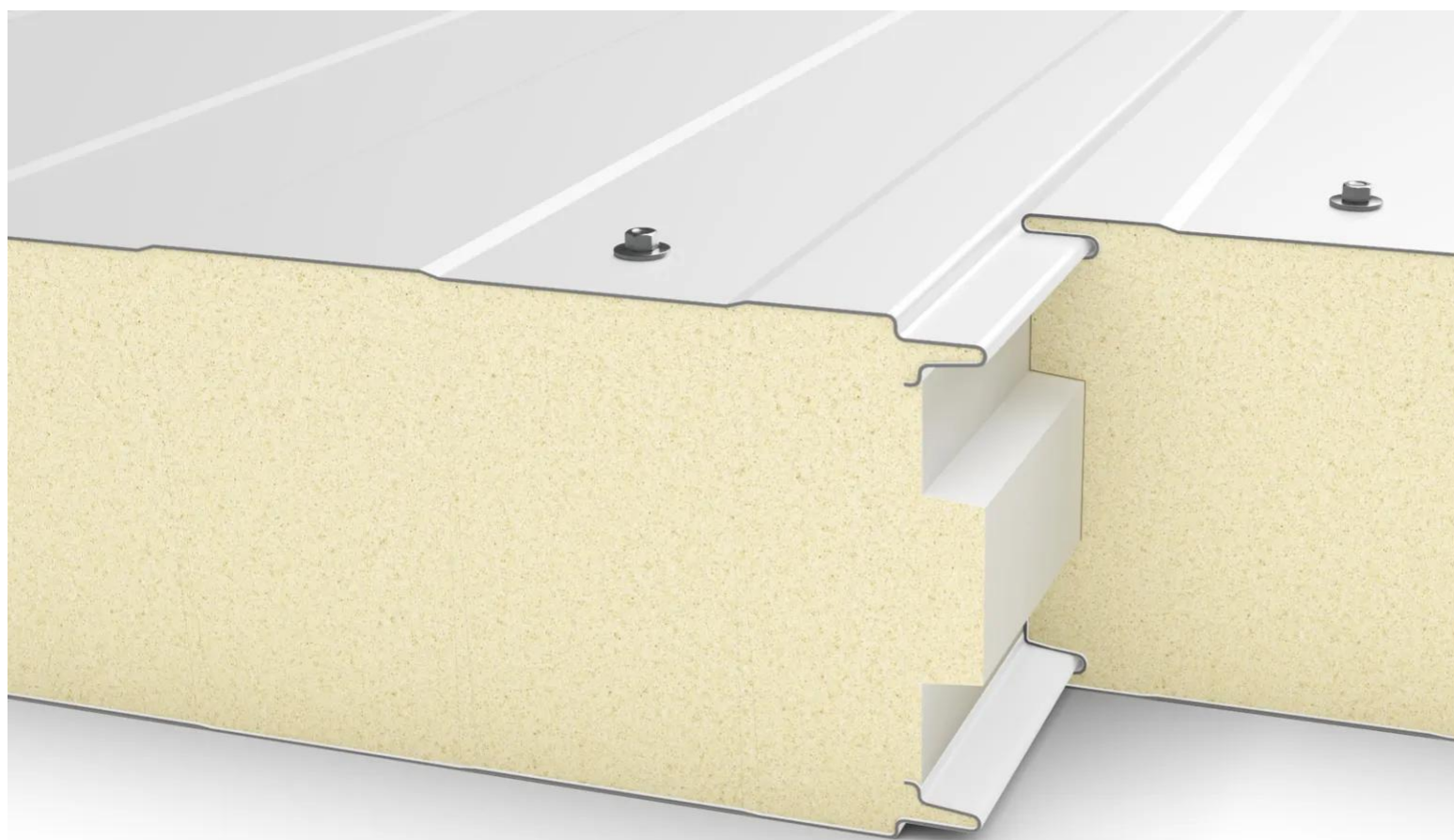
1150

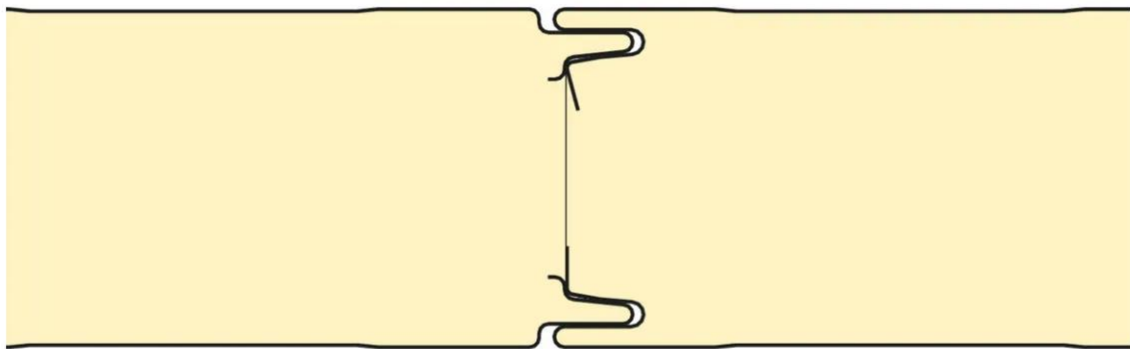
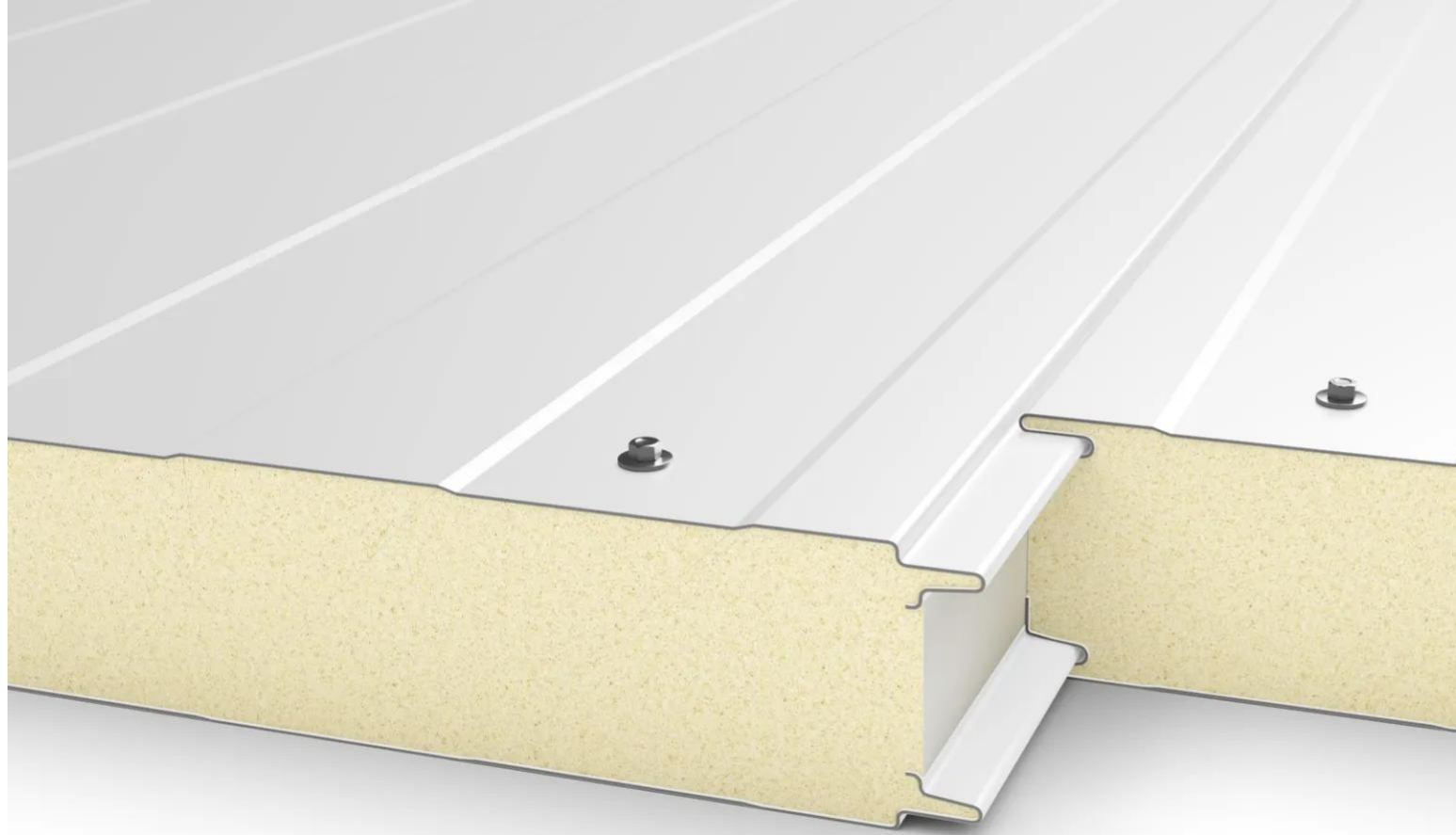


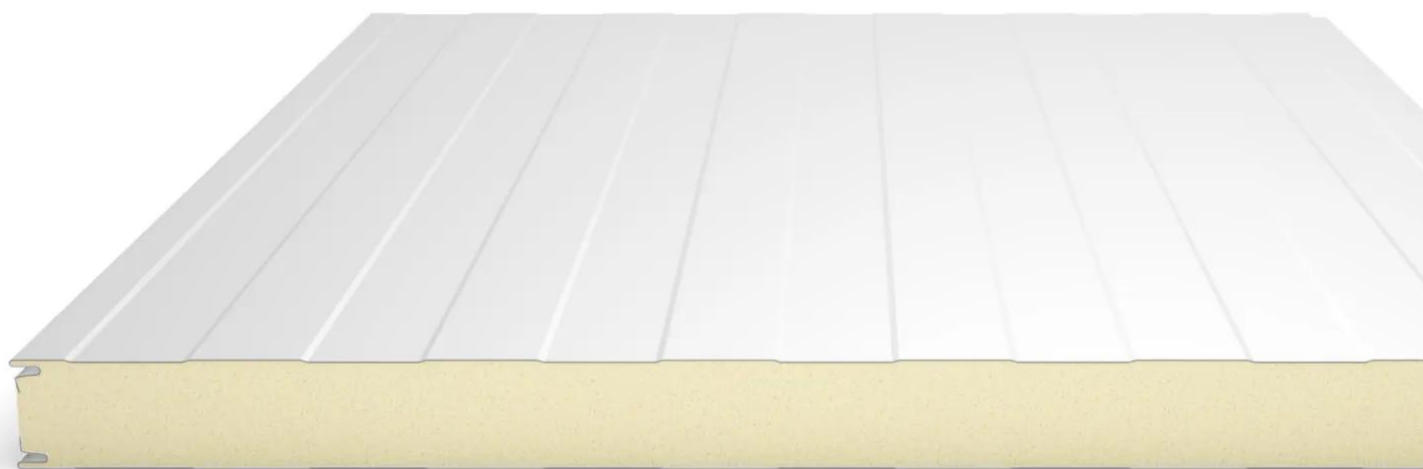
Frigotherrm liss

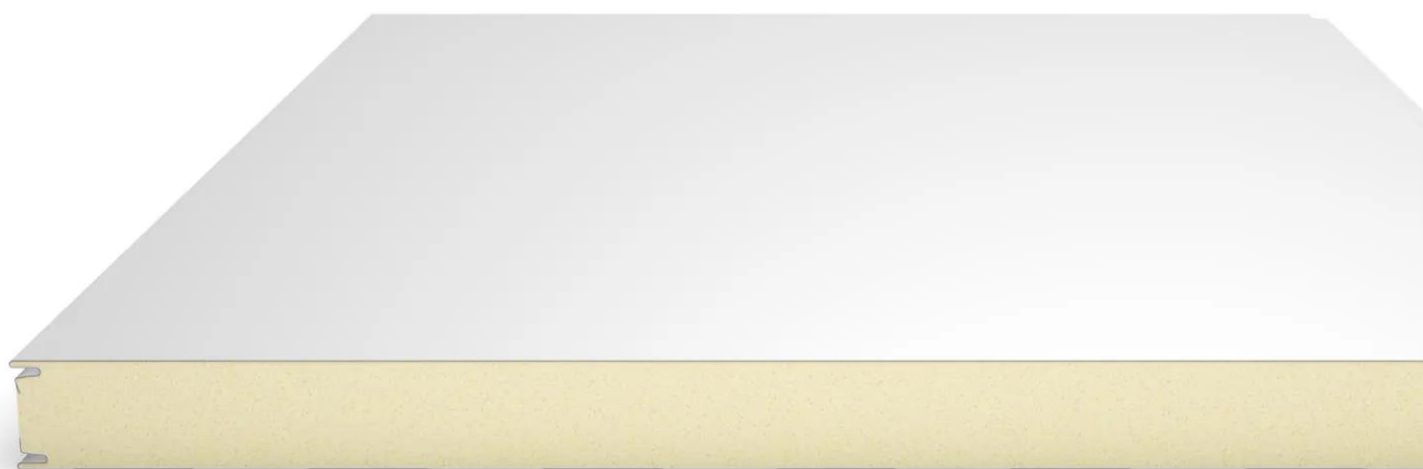
1150





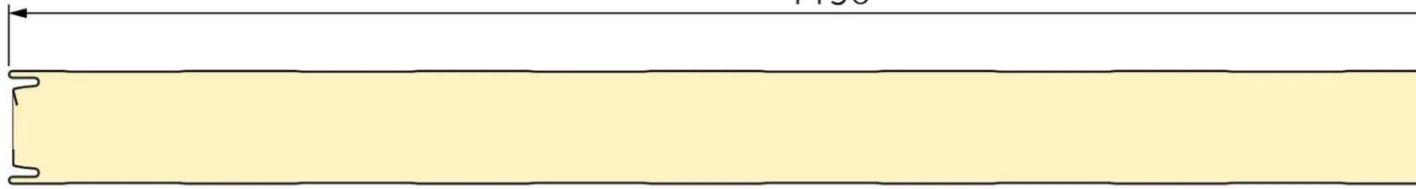






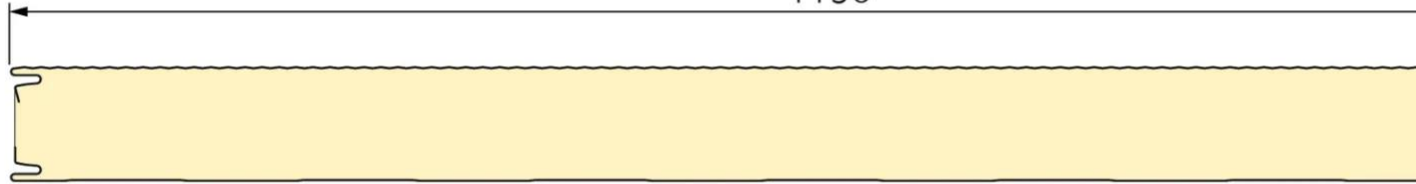
Frigotherm nervure

1150



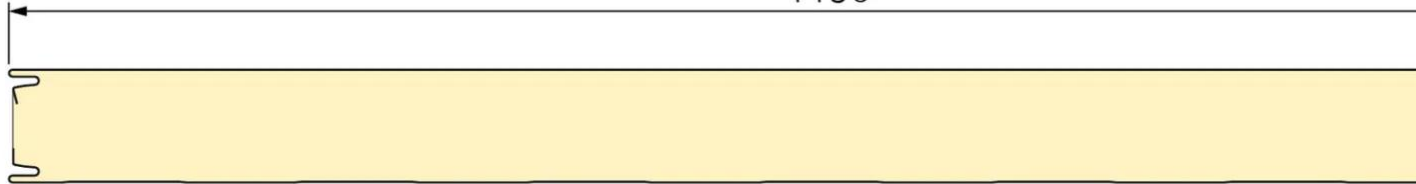
Frigotherm micronervure

1150



Frigotherm liss

1150



Properties

Accessories

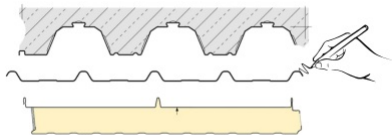
[Request informations](#)

Related products

[Request informations](#)

Technical documents

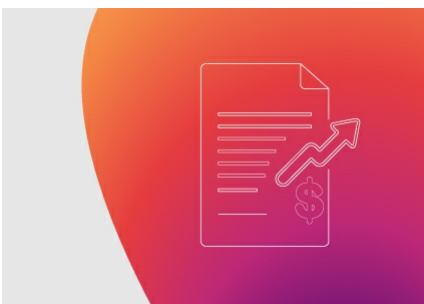
Documents



2D DWG Frigotherm

[View document](#)

Technical & commercial documentation



Frigotherm® & Frigotherm® iQ+

[View document](#)

Related projects



[Cerelia](#)

[Cold store](#)

[France](#)

[Saint-Laurent-Blangy](#)

[Hairplus® Solfilm \(PET 55 µ\)](#)



[Three King Cherries](#)

[Cold store](#)

[New Zealand](#)

[Waikerikeri](#)



[Clarebout](#)

[Cold store](#)

[Belgium](#)

[Comines-Warneton](#)

[Hairplus®](#)