

Promirock® S

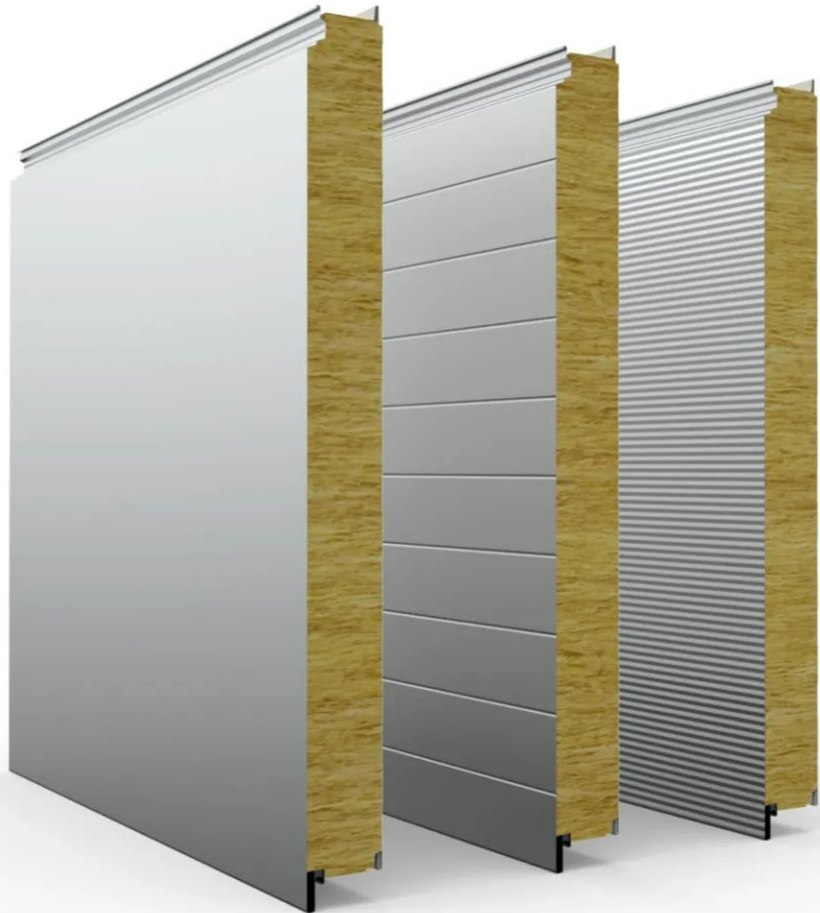
Promirock S is a wall hidden fixing insulating sandwich panel that perfectly meets the non-combustibility requirements of public and logistics buildings. Made of a mineral wool core and two prepainted steel facings, its aesthetic is enhanced by hidden fixings and its external facing available in different finishes such as ribbed, micro-ribbed, smooth,

- Standard cover width: 1 000 mm
- Thermal transmittance U_c down to $0.215 \text{ W/m}^2 \cdot \text{K}$ in thickness 200 mm
- Reaction to fire A2-s1,d0 (equivalent M0)
- Validated for use in Public Access Buildings (ERP)
- Standard thickness of facings: External side 0.63 mm/Internal side 0.50 mm
- 8 thicknesses of insulation core available, from 60 to 300 mm
- Vertical or horizontal installation
- Hidden fixings

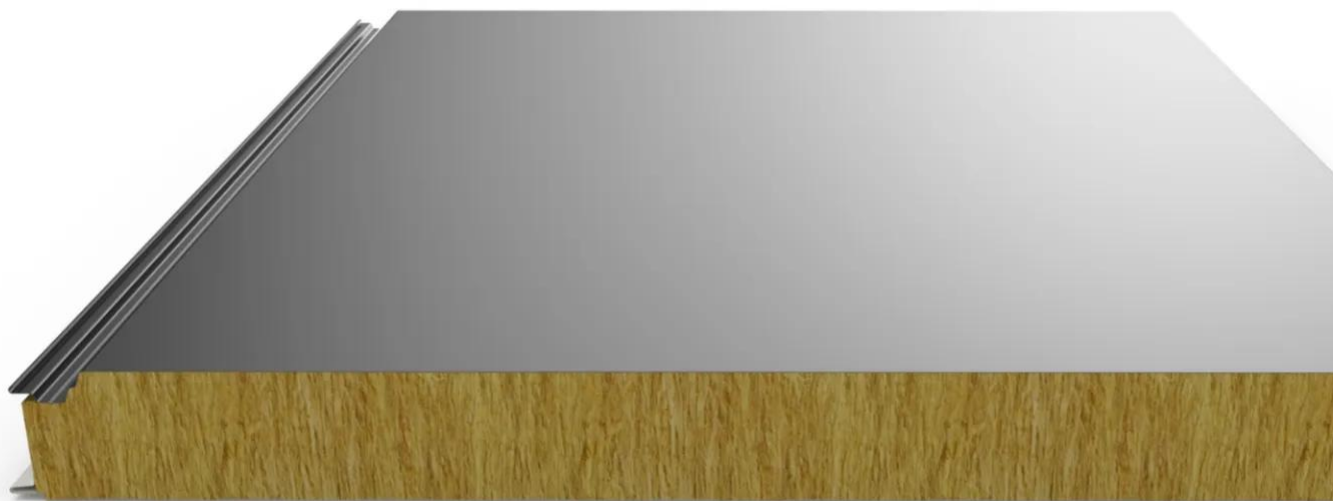
[Contact us](#)

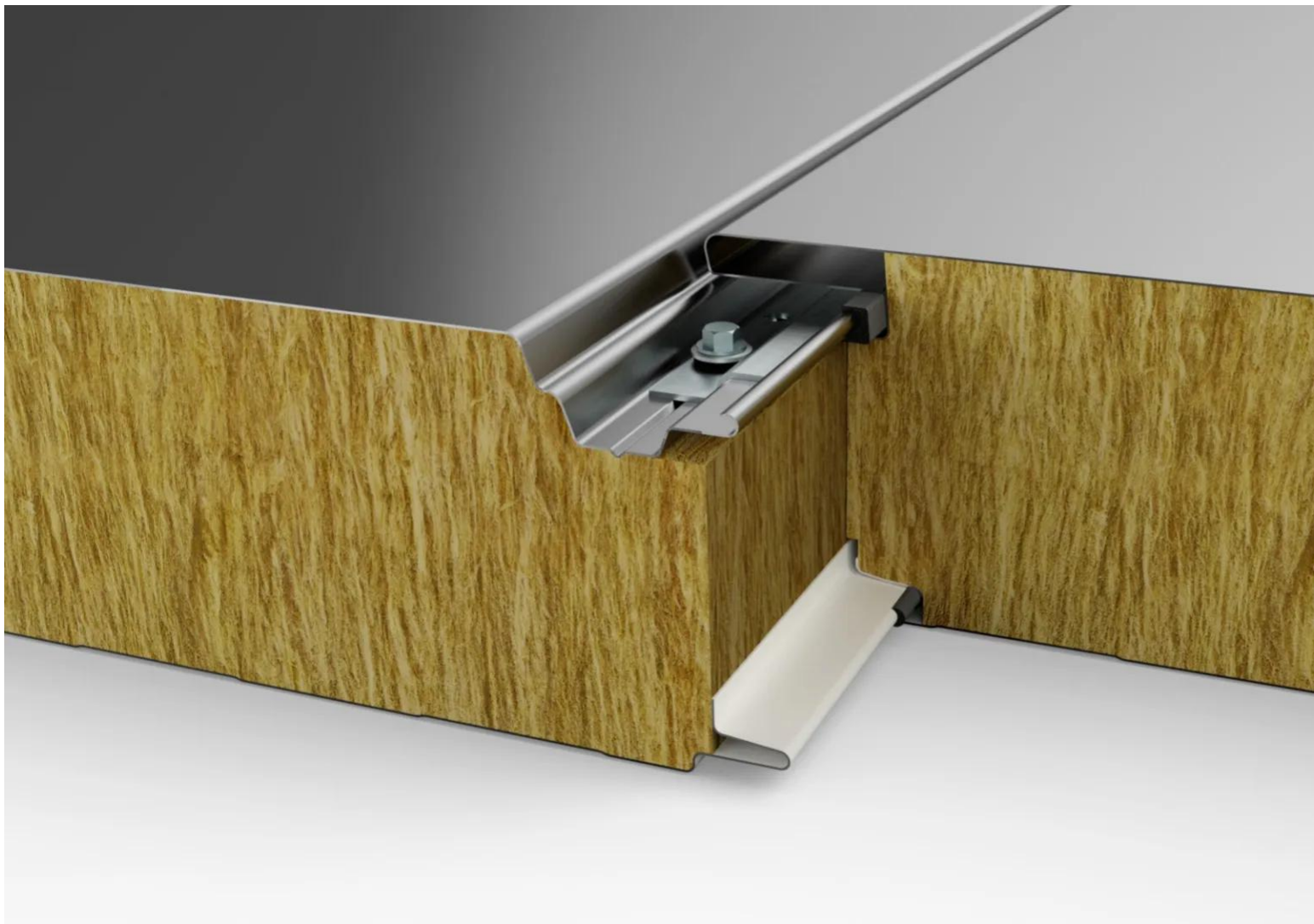


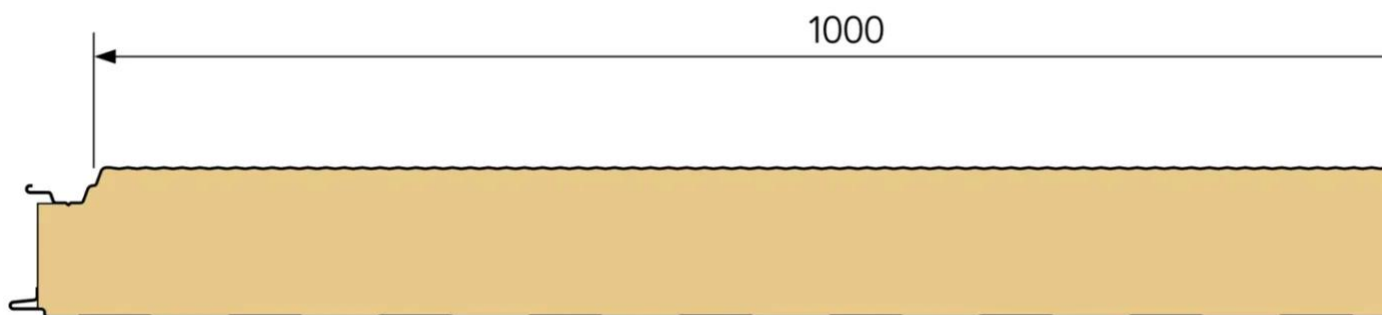
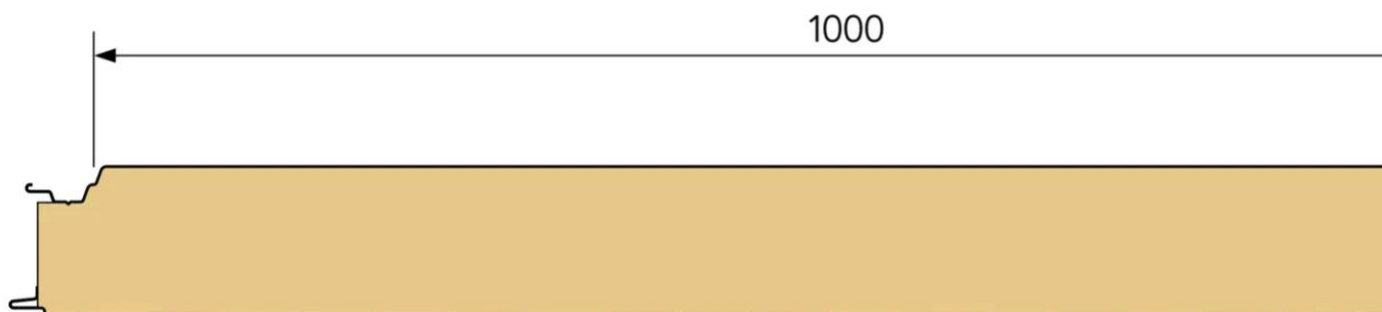
•

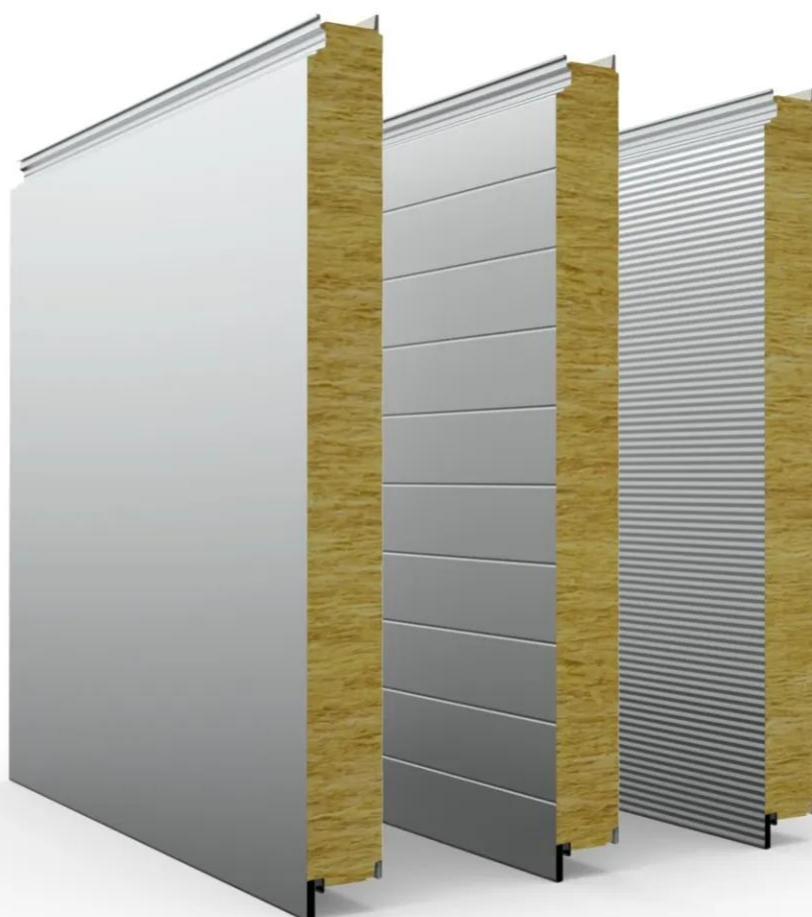
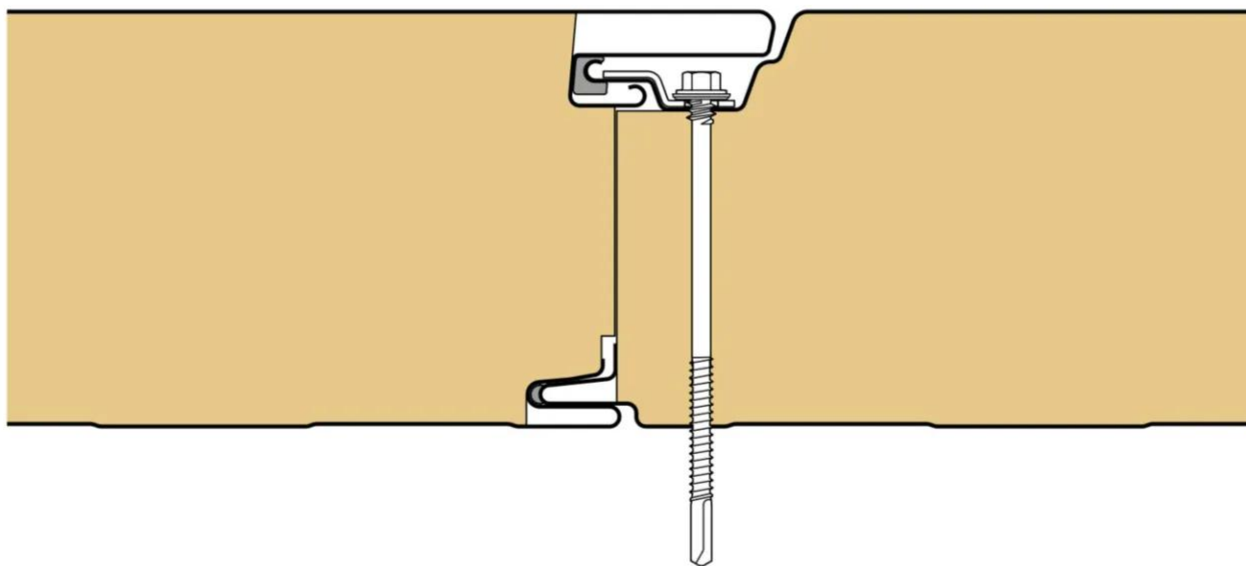


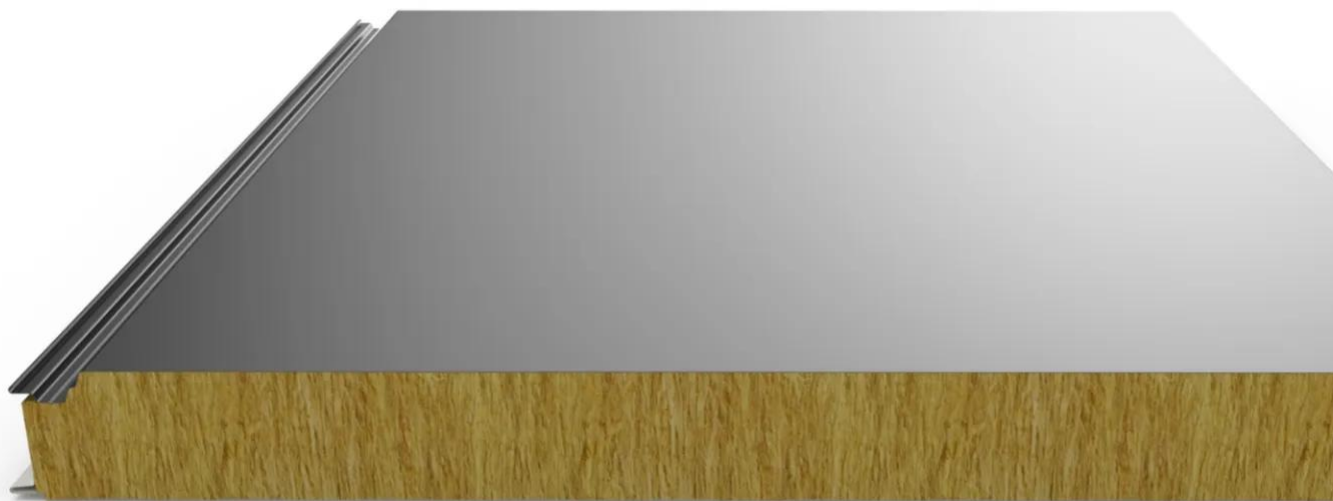
•

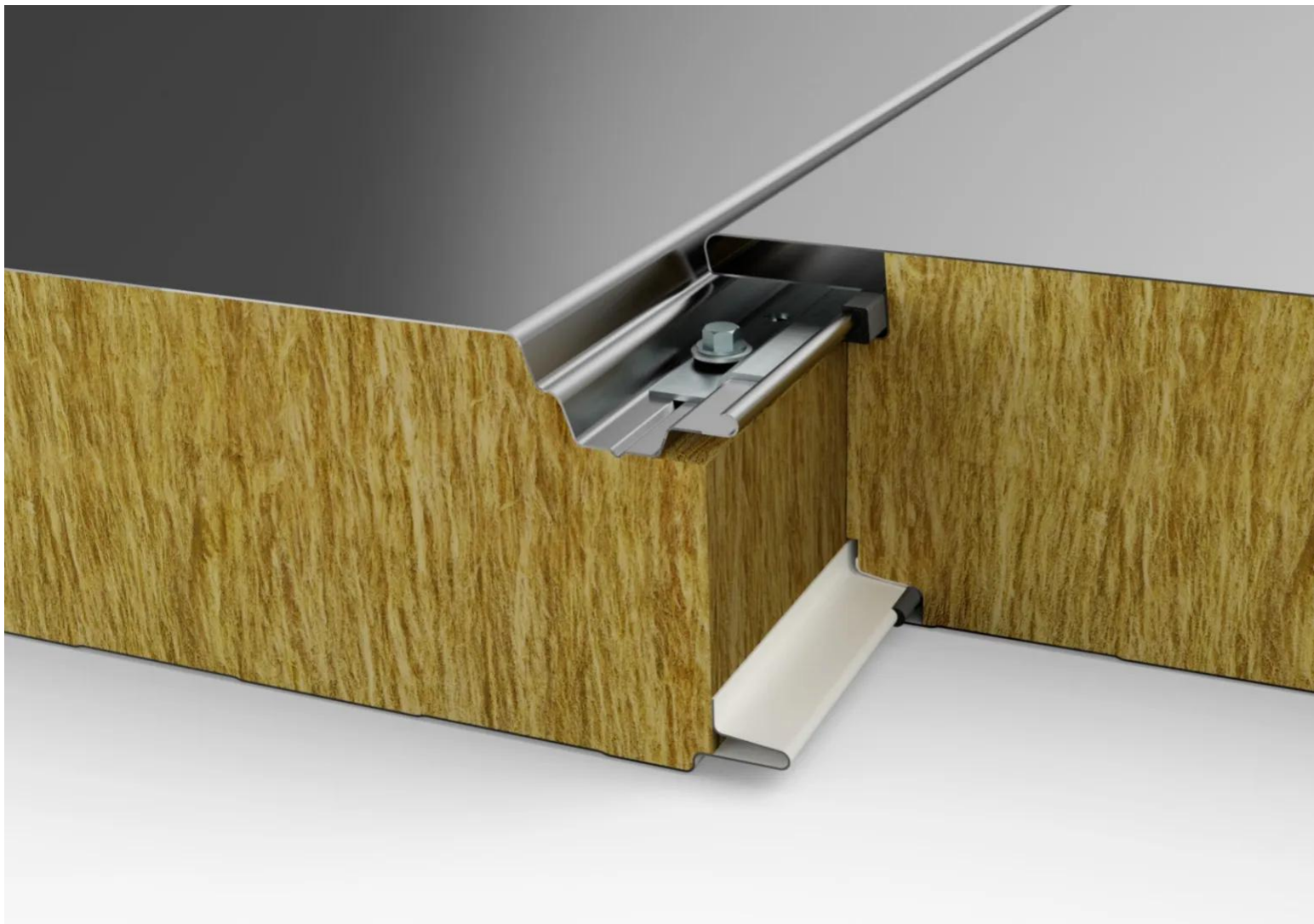
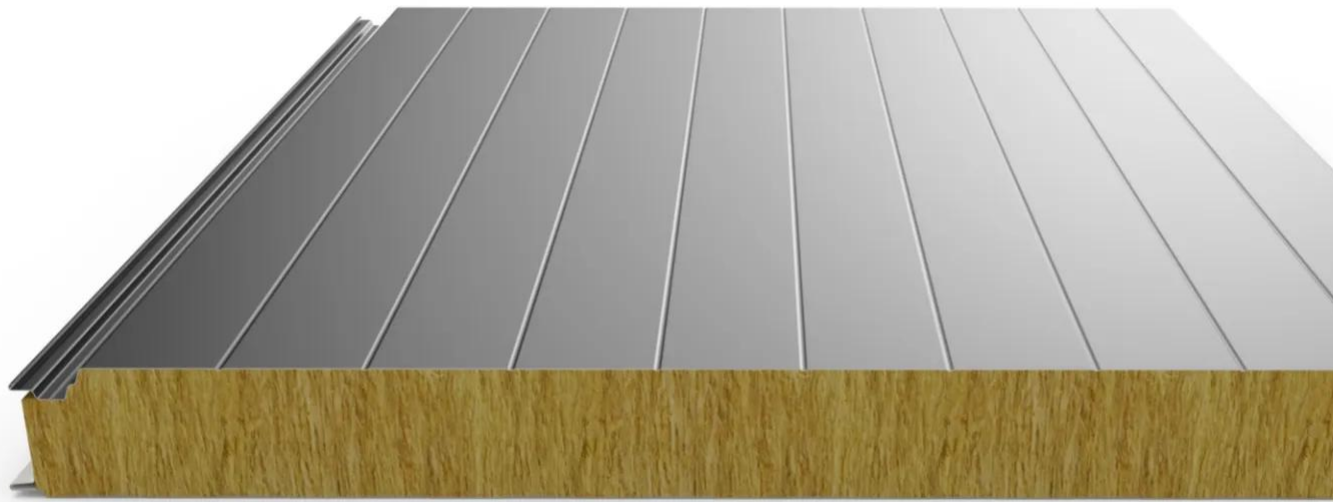


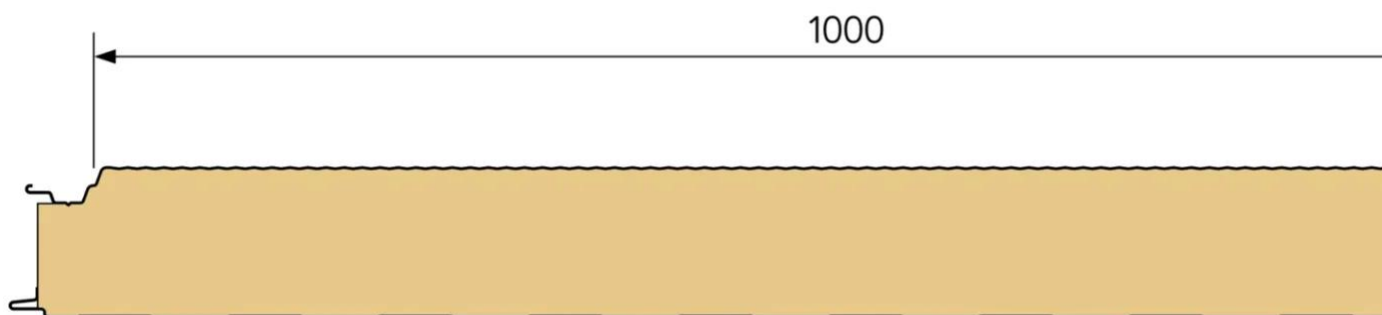
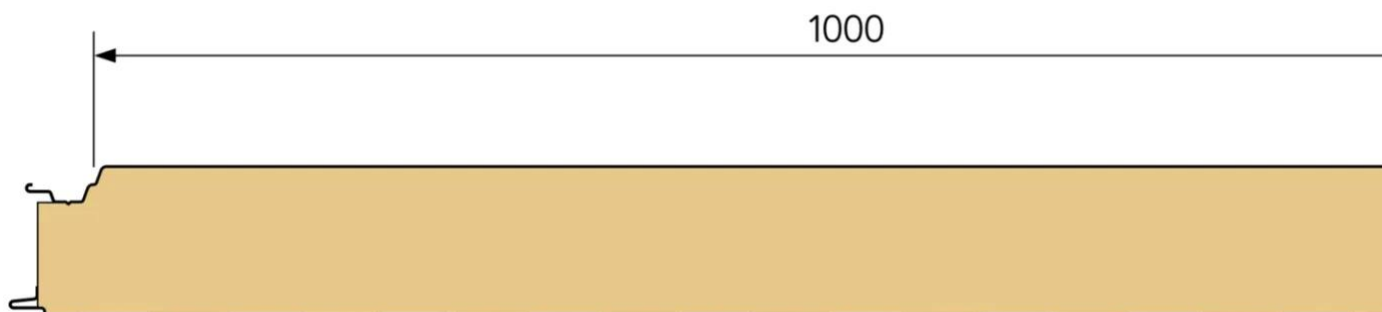


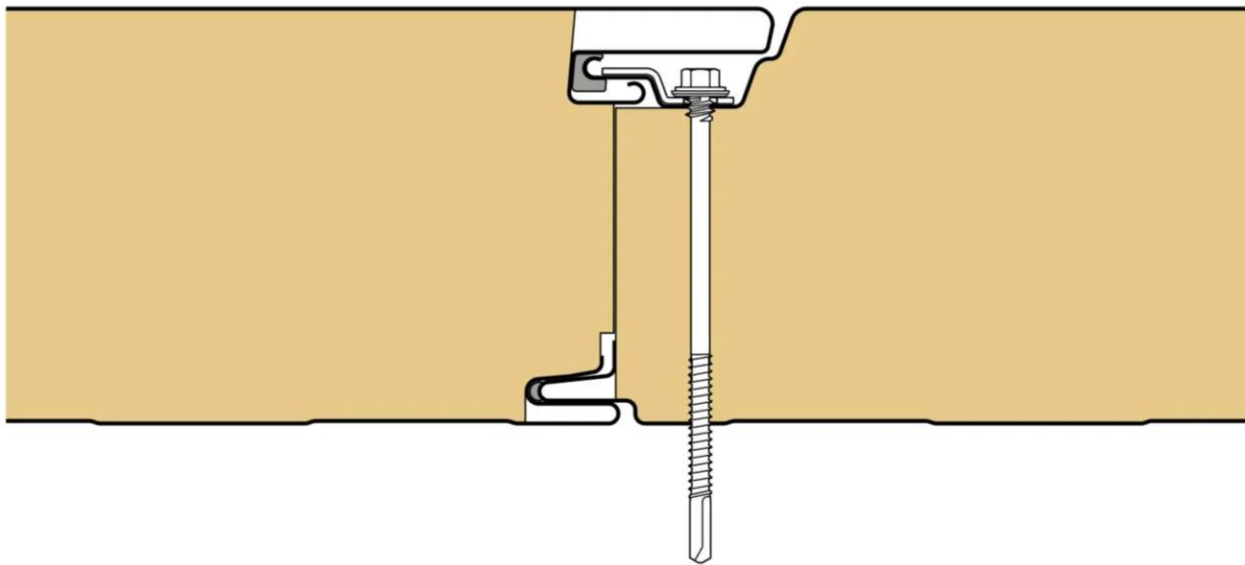












Properties

Accessories

[Request informations](#)

Related products

[Request informations](#)

Technical documents

[Request informations](#)

Technical & commercial documentation

[Request informations](#)