

Hacierco® 1.400.90

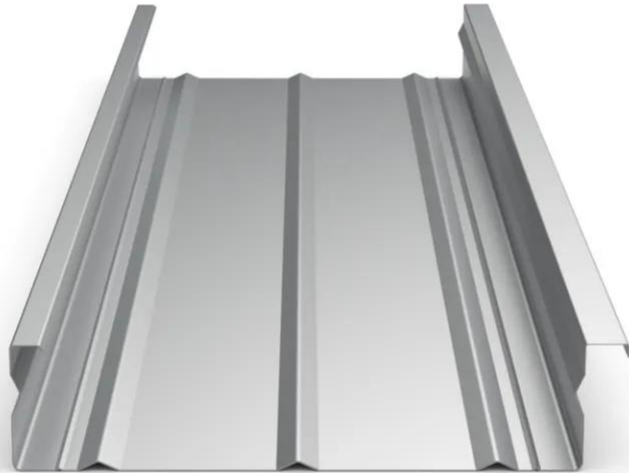
Hacierco 1.400.90, 90C and 90P are roof trays used in our double skin roof system GLOBALROOF. They make it possible to adapt the solutions both to the regulatory requirements and the architectural constraints of your projects thanks to the aesthetic aspect of the tray.

- Can be used as structural or non-structural tray
- Neat planar inner surface
- 2 options : classical perforation type P (ø 5mm. EA 12,5mm with a pattern open area of 15% or perforation punctured C “crevé”
- When the tray is perforated and used in our globalroof systems, very good acoustic performances can be achieved (see our sloped roof systems)

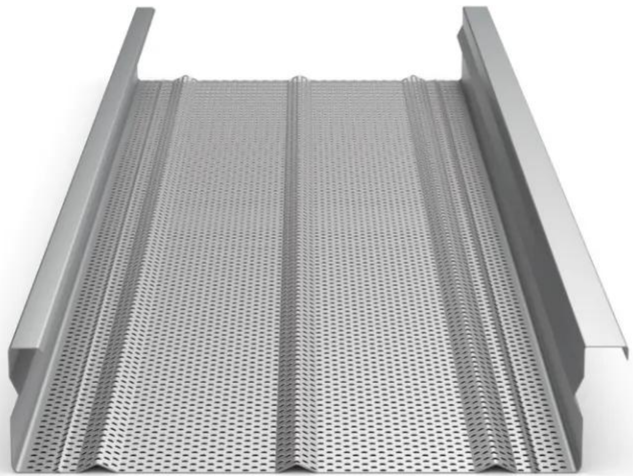
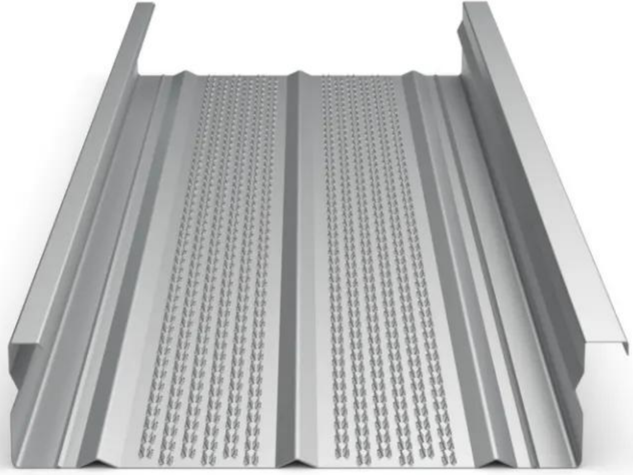
[Contact us](#)

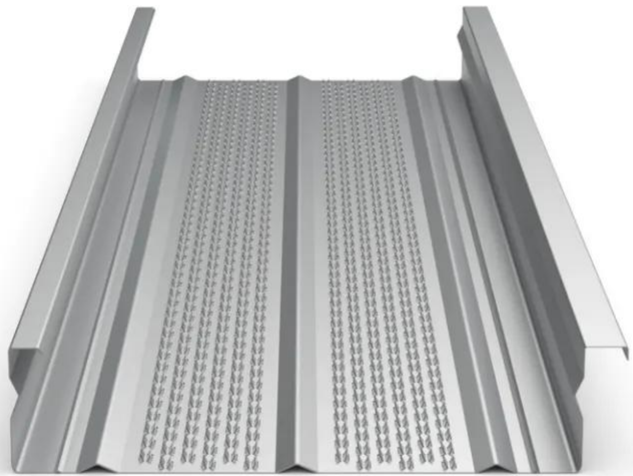
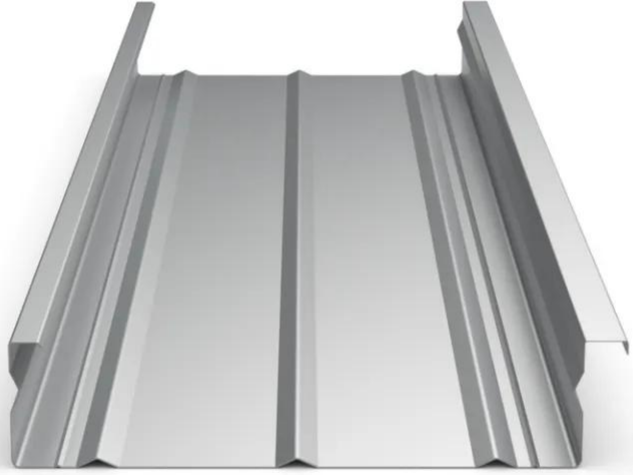


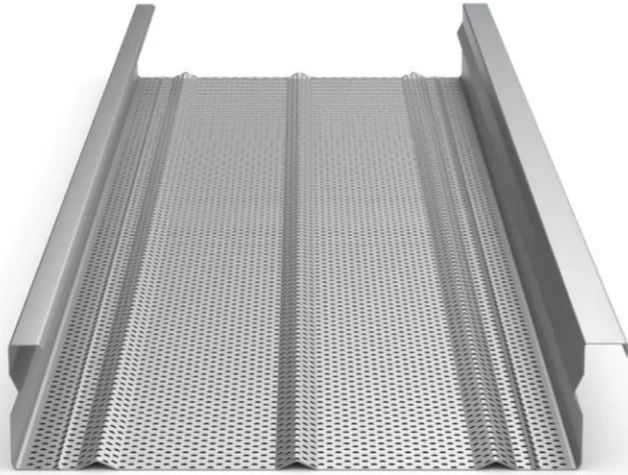
•



•







Properties

Accessories

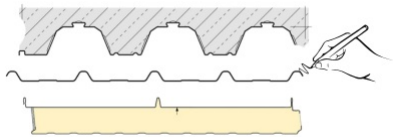
[Request informations](#)

Related products

[Request informations](#)

Technical documents

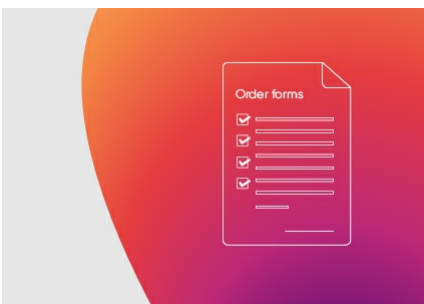
Documents



2D DWG Hacierco® 1.400.90

[View document](#)

Technical & commercial documentation



Questionnaire needed to determine bearing or non-bearing roofing trays

[View document](#)