

Globalroof® SE 25

SE 25 is a flat roof system made on roof steel deck.

Composition :

- Roof deck Hacierco (thickness according to span and loads)
- Mineral wool 170mm total thickness ($\lambda = 0.037\text{W/m.K}$ maximum)
- Multilayer Bituminous or PVC warterproof membrane

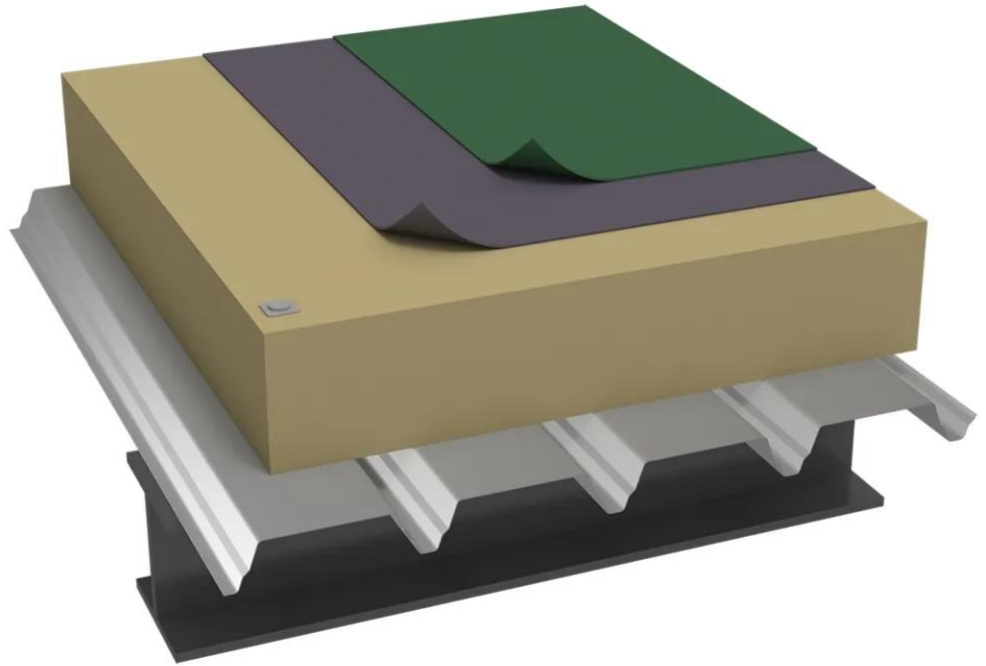
Thermal performance :

- Thermal transmittance $U_p = 0.25\text{W/m}^2.\text{K}$ estimated for 5 fixations/m²

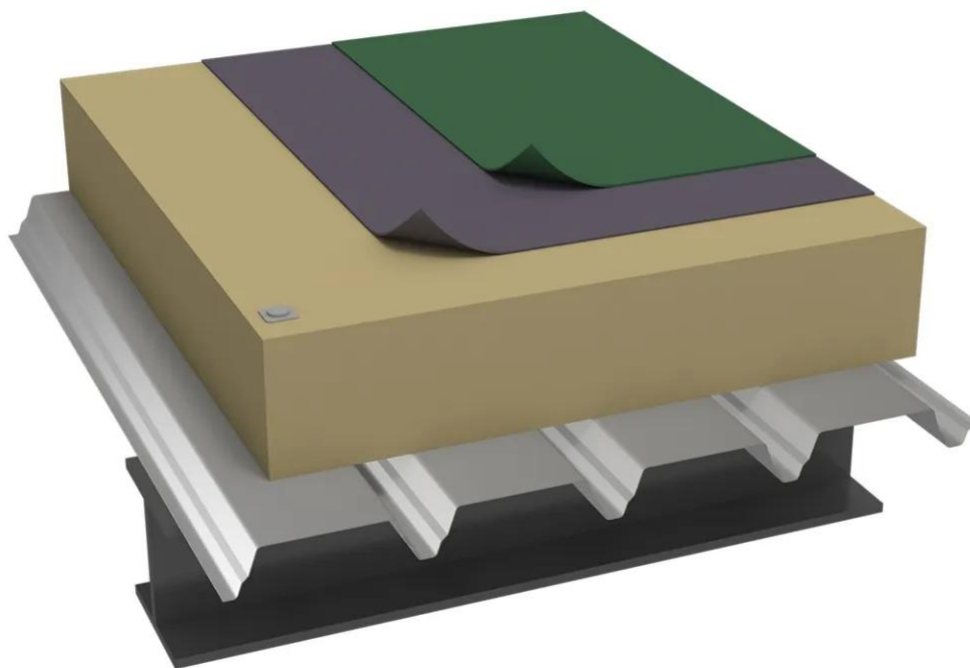
[Contact us](#)



-



-



Properties

Accessories

[Request informations](#)

Related products

[Request informations](#)

Technical documents

[Request informations](#)

Technical & commercial documentation

[Request informations](#)