

Globalroof® CIN 324PR

Flat roof system made of roof steel deck and an inner face of perforated structural trays providing excellent acoustic absorption and good sound insulation.The system is recommended for a nice ceiling appearance.

1- Non load bearing tray Hacierco C 500.90 P perforated P

- Thickness 0.75mm

2- Cleats or steel spacer

3- Mineral wool Sorock

- Thickness 90mm (black glass veil)

4- Vapor barrier

5- Multibeam purlin

6- Mineral wool Torock

- Thickness 120mm (Rockwool)

7- Roof deck Hacierco 40 SR

- thickness 0.75 mm

8- Mineral wool Rockacier

- Thickness 120mm (Rockwool)

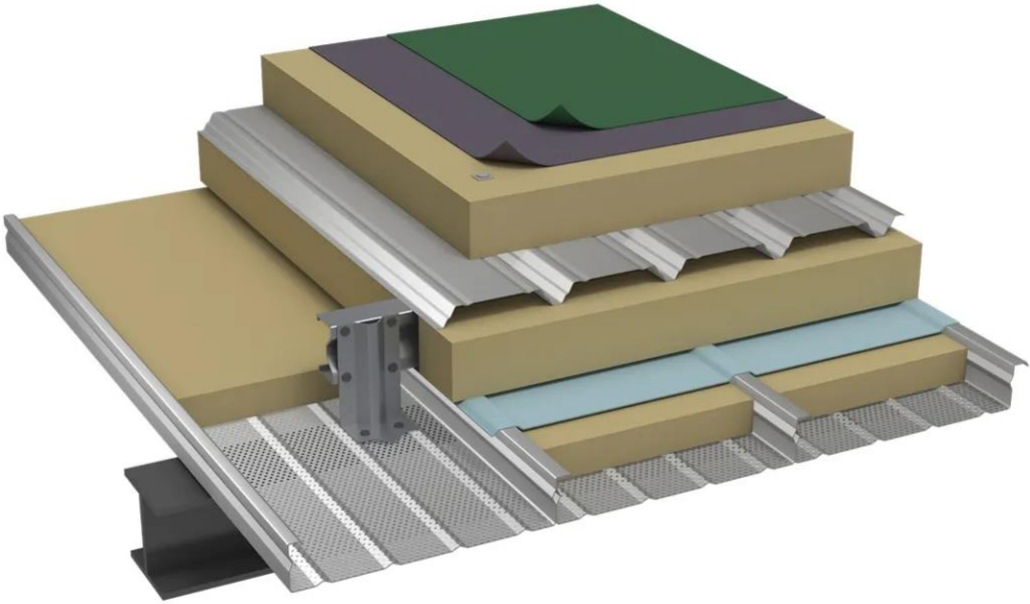
9- Multi layer bituminous waterproof membrane

- Sound reduction index $R_w(C;Ctr) = 49(-4;-11)$ dB
- Acoustic absorption $\alpha_w = 0.95$
- Thermal transmittance $Up = 0.15W/m^2.K$ estimated
- Weight: 56kg/m²
- Spacing: 43cm

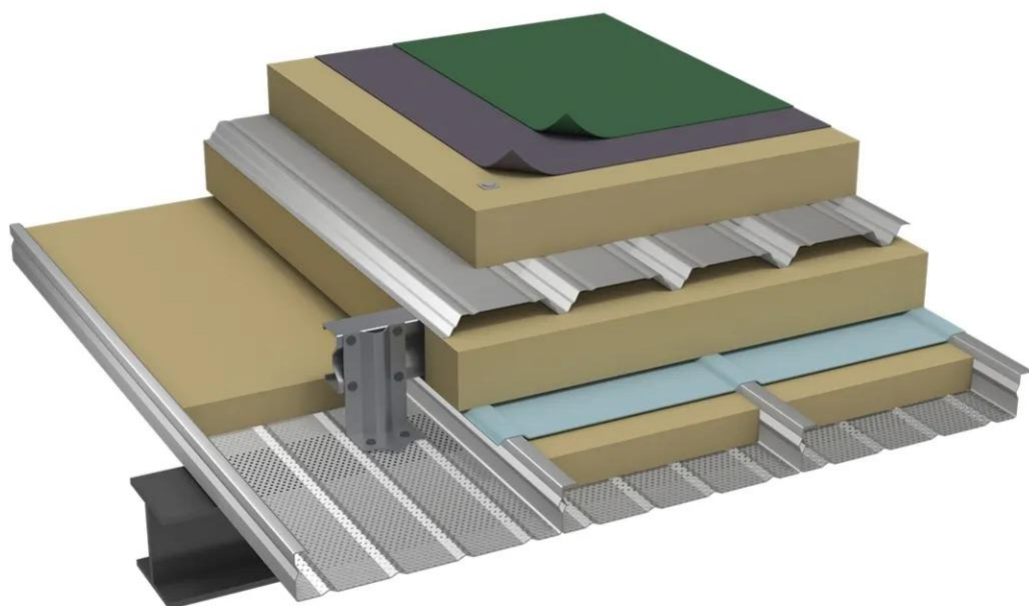
[Contact us](#)



-



-



Properties

Accessories

[Request informations](#)

Related products

[Request informations](#)

Technical documents

[Request informations](#)

Technical & commercial documentation

[Request informations](#)