

Globalroof® Toptherm 15 Ondarock® T

Globalroof Top Therm 15 Ondastyl T is a double skin system for slooped roof consisting in a structural tray Hacierco® as inner facing and a insulated sandwich panel Ondastyl® as wheather facing. The system offer an estimated thermal performance of Up 0.15W/m².K.

Composition

- Non load-bearing Tray Hacierco C 500.90 non perforated or perforated type P, thickness according to the span
- Glass wool or mineral wool, thickness 90mm (in the bottom of the tray)
- Airtight vapor barrier foil
- Purlin Multibeam on cleats
- Glass wool or mineral wool thickness 140mm (unrolled between purlins)
- Sandwich panel Ondastyl T 120mm

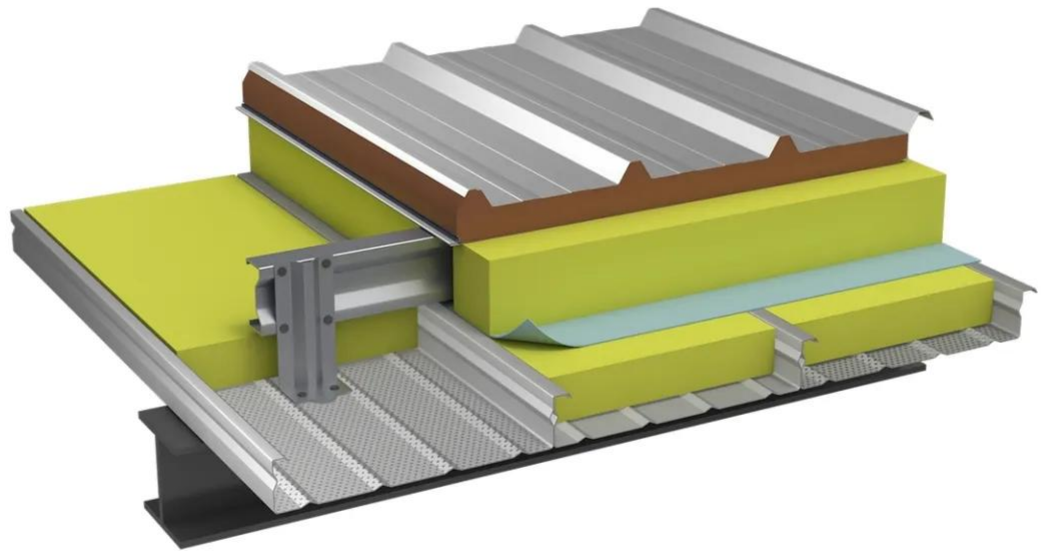
Performance and characteristics :

- Thermal transmittance Up = 0.15W/m².K

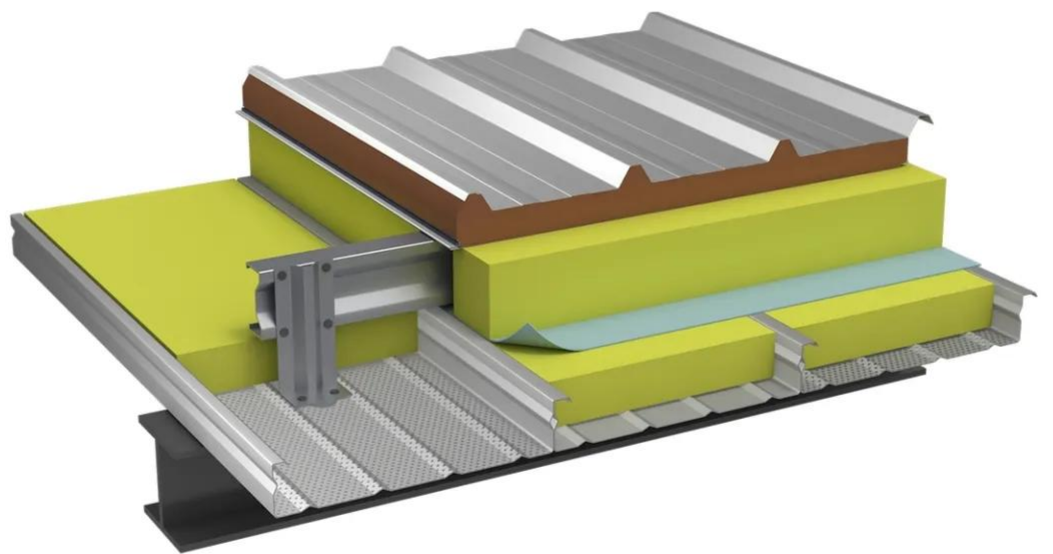
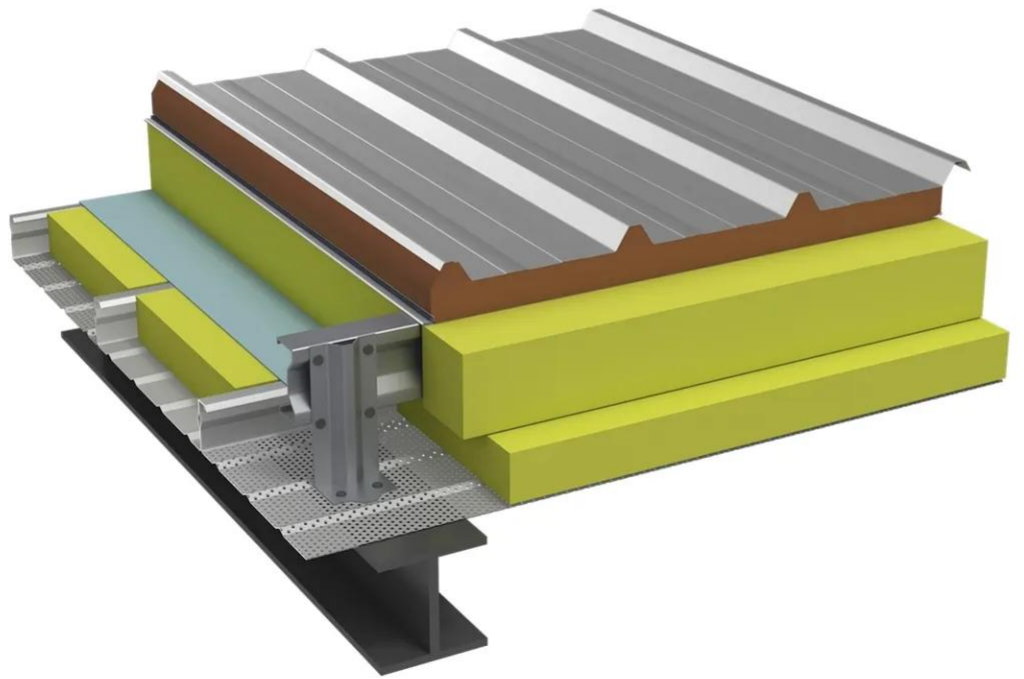
[Contact us](#)

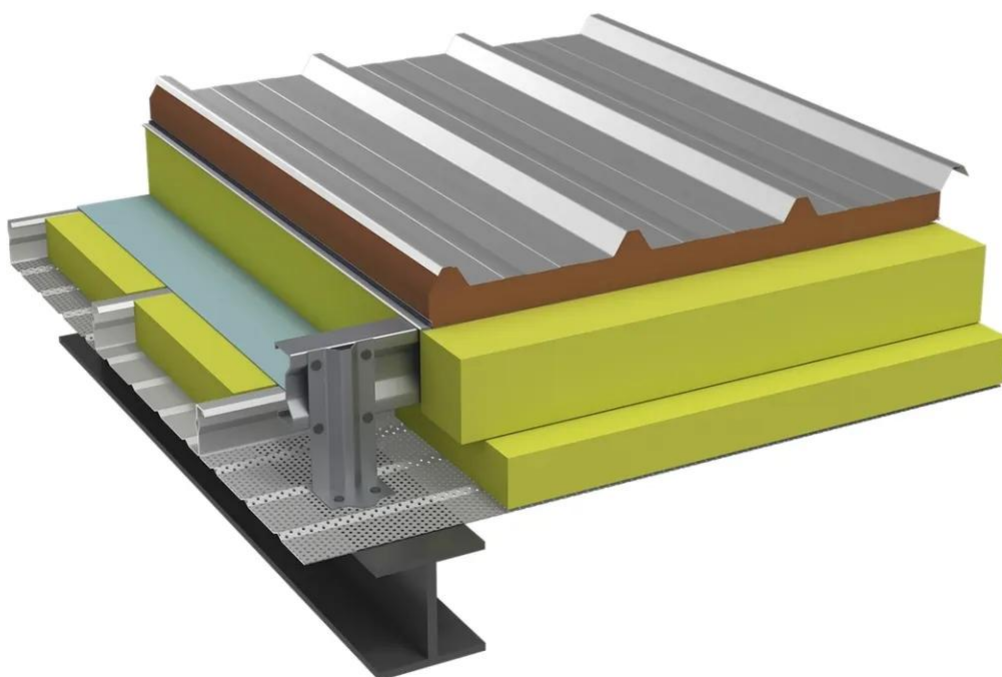


-



-





Properties

Accessories

[Request informations](#)

Related products

[Request informations](#)

Technical documents

[Request informations](#)

Technical & commercial documentation

[Request informations](#)