

Globalroof® Toptherm 15 Ondatherm® T

Toptherm 15 is a double skin system for slooped roof consisting of a structural tray Hacierco® as inner facing and a insulated sandwich panel Ondatherm® as wheather facing. The system offers a thermal performance of Up 0.15W/m².K.

Composition :

- Non load-bearing Tray Hacierco C 500.90 non perforated or perforated type P , thickness according to the span
- Glass wool or mineral wool 90mm thick in the bottom of the tray
- Airtight vapor barrier film
- Purlin Multibeam on cleats
- Glass wool or mineral wool 140mm thick unrolled between purlins
- Sandwich panel Ondatherm® T 80mm

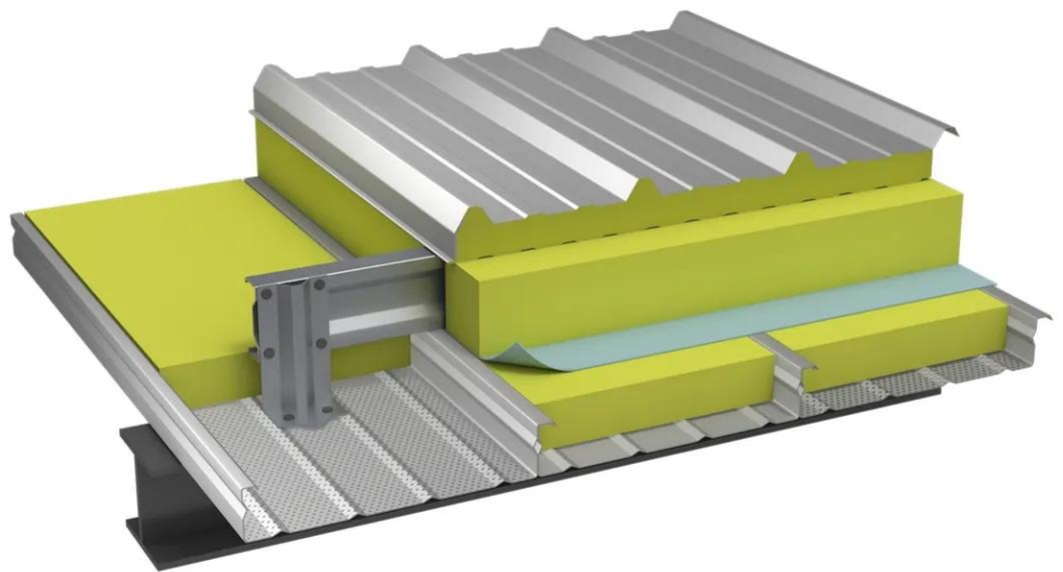
Performances :

- Thermal transmittance Up = 0.15W/m².K

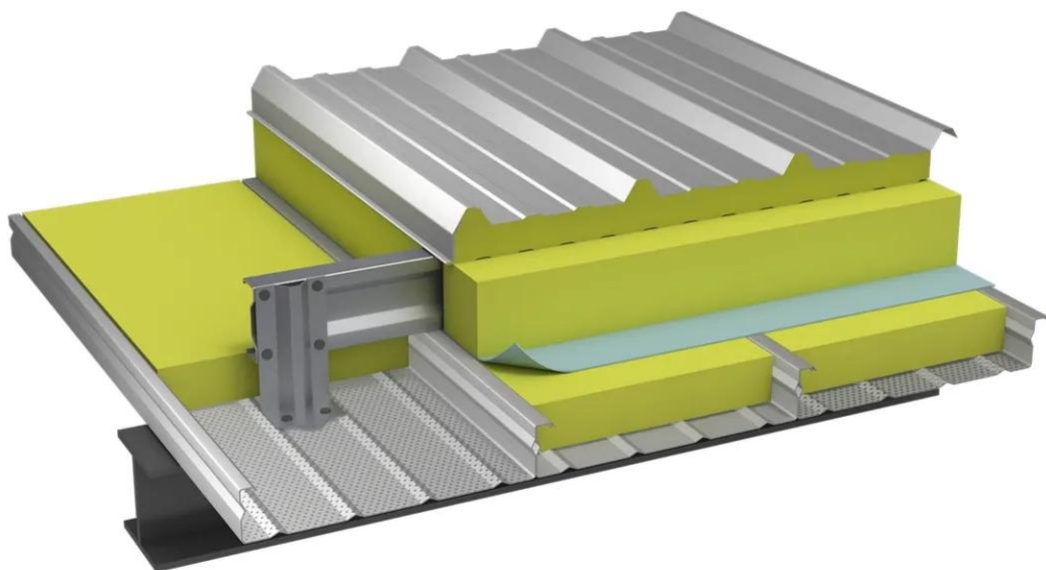
[Contact us](#)



-



-



Properties

Accessories

[Request informations](#)

Related products

[Request informations](#)

Technical documents

[Request informations](#)

Technical & commercial documentation

[Request informations](#)