

Globalroof® DPP 15

DPP 15 is a double skin system for slooped roof consisting of a structural tray as inner facing and a trapezoidal steel sheet as wheather facing,the system offers a thermal performance of Up 0.15W/m².K.

Composition :

- Non load-bearing Tray Hacierco C 450.70 non perforated or perforated type P with a thickness according to the span
- Glass wool or mineral wool 70mm thick (in the bottom of the tray ($\lambda = 0.040\text{W/m.K}$ maximum)
- Airtight vapor barrier film
- Purlin Multibeam on cleats
- Glass wool or mineral wool 150mm thick unrolled between purlins ($\lambda = 0.040\text{W/m.K}$
- Glass wool or mineral wool 120mm thick unrolled and nipped between purlins ($\lambda = 0.040\text{W/m.K}$)
- Glass wool 60mm thick unrolled and nipped on the purlin
- Roof profile Trapeza, Frequence or Authentique

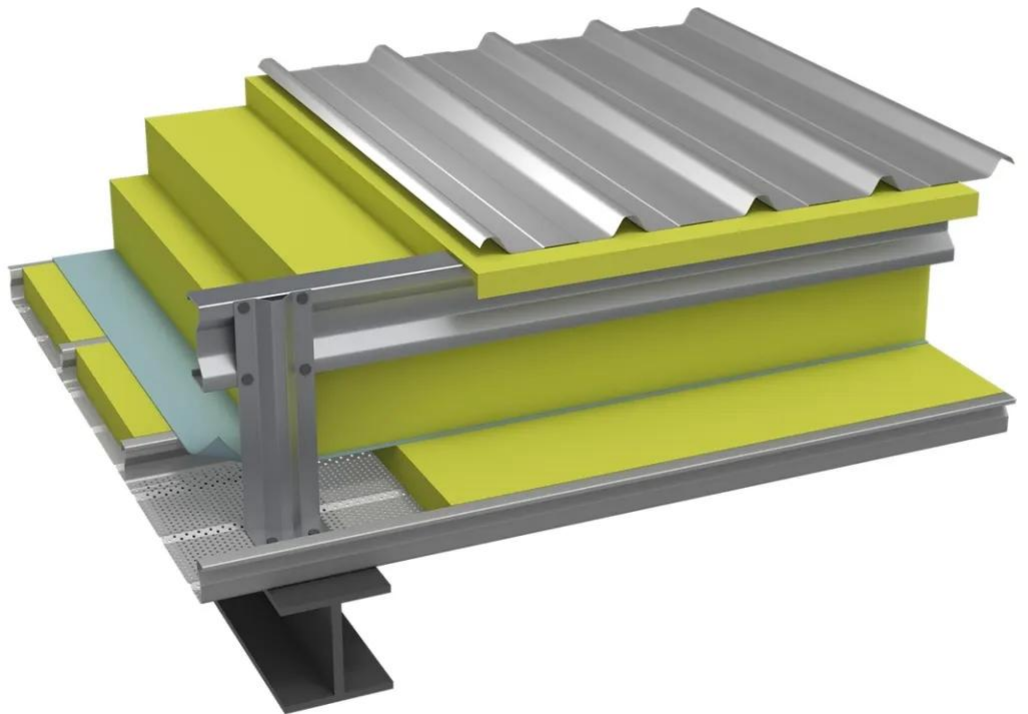
Performance :

- Thermal transmittance Up = 0.15W/m².K

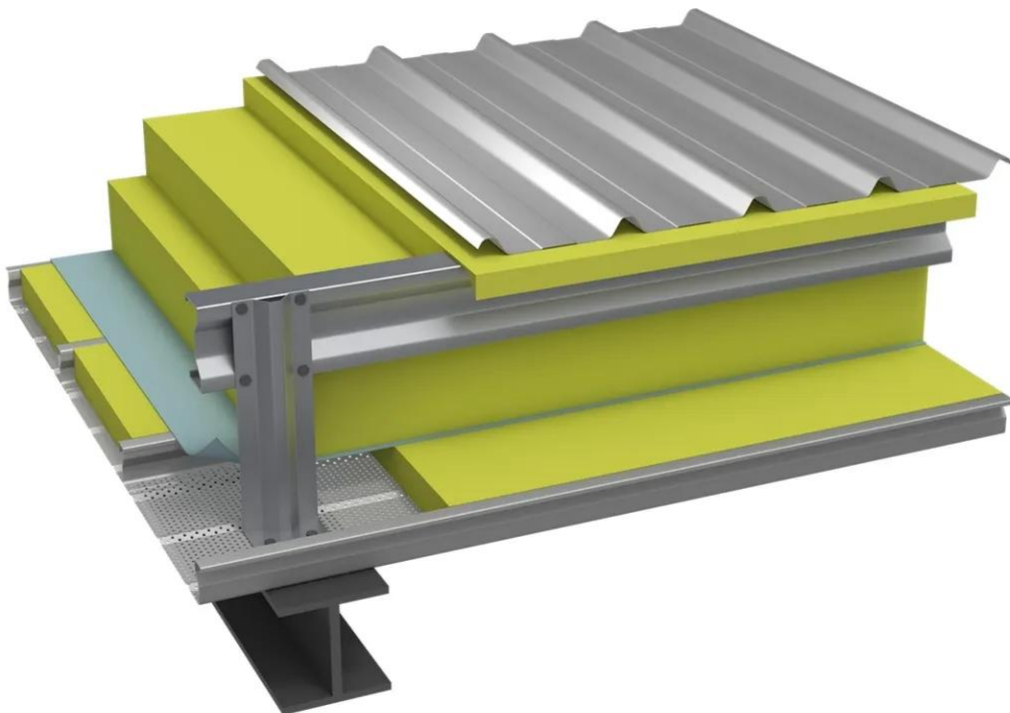
[Contact us](#)



-



-



Properties

Accessories

[Request informations](#)

Related products

[Request informations](#)

Technical documents

[Request informations](#)

Technical & commercial documentation

[Request informations](#)