

## Globalroof® DPN 41

DPN 41 double skin system for slooped roof consisting of a trapezoidal profile as inner facing and a trapezoidal steel sheet as wheather facing, the system provides Up value of 0.30W/m².K.

Composition :

- Roof profile Trapeza
- Glass wool or mineral wool 60mm thick ( $\lambda = 0.040\text{W/m.K}$  maximum)
- Cleats or steel spacer
- Purlin
- Glass wool 60 mm tick nipped on the purlin ( $\lambda = 0.040\text{W/m.K}$  maximum)
- Roof profile Frequence, Trapeza or Authentique

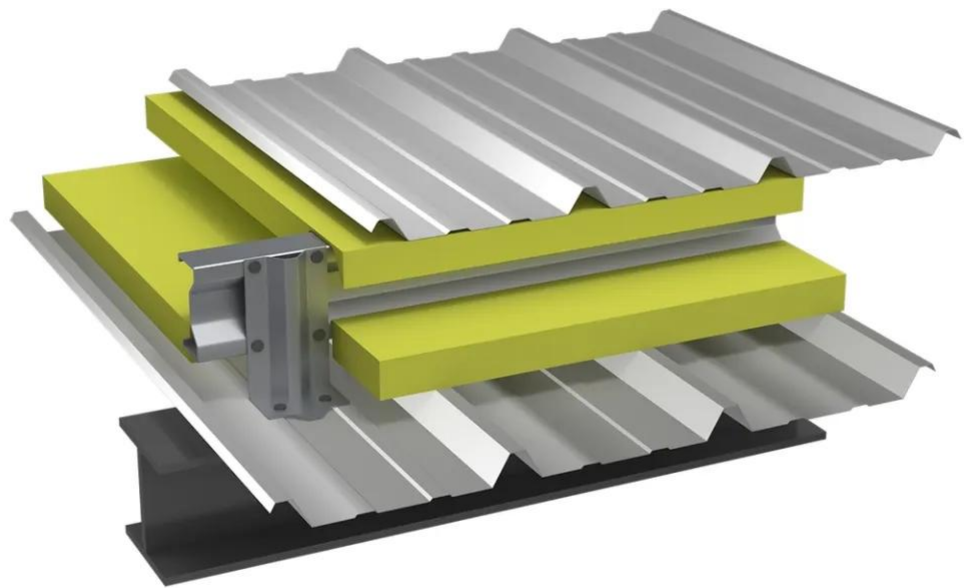
Performance :

- Thermal transmittance  $U_p = 0.41\text{W/m}^2.\text{K}$

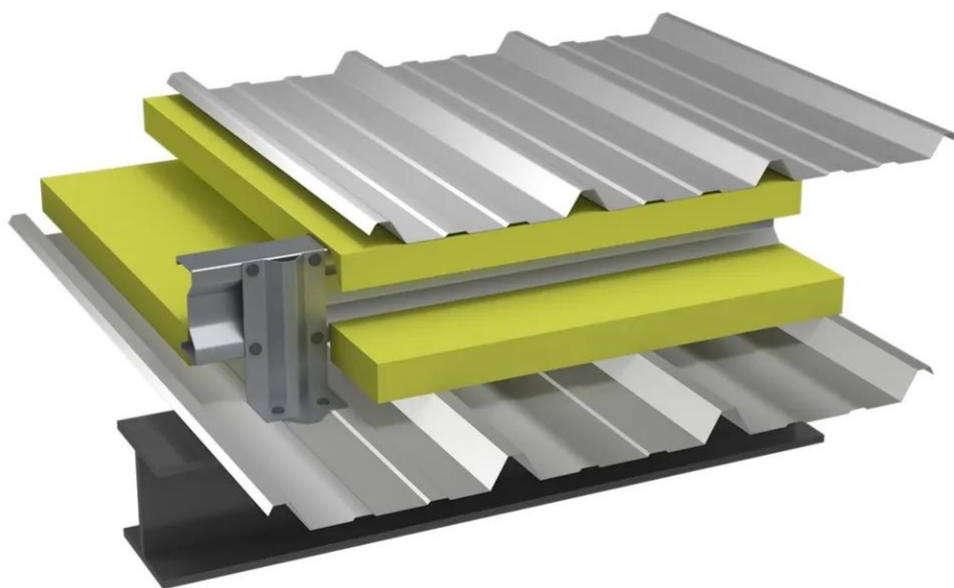
[Contact us](#)



•



•



## **Properties**

## **Accessories**

[Request informations](#)

## **Related products**

[Request informations](#)

## **Technical documents**

[Request informations](#)

## **Technical & commercial documentation**

[Request informations](#)