

## Globalroof® DPN 25

DPN 25 is a double skin system for slooped roof consisting of trapezoidal profile as inner facing and a trapezoidal steel sheet as wheather facing providing a Up value of 0.25W/m².K.

Composition :

- Roof profile Trapeza
- Glass wool or mineral wool 160mm thick unrolled between purlins ( $\lambda = 0.040\text{W/m.K}$  maximum)
- Cleats or steel spacer
- Purlin
- Glass wool 60mm thick nipped on the purlin( $\lambda = 0.040\text{W/m.K}$  maximum)
- Roof profile Frequence.Trapeza or Authentique

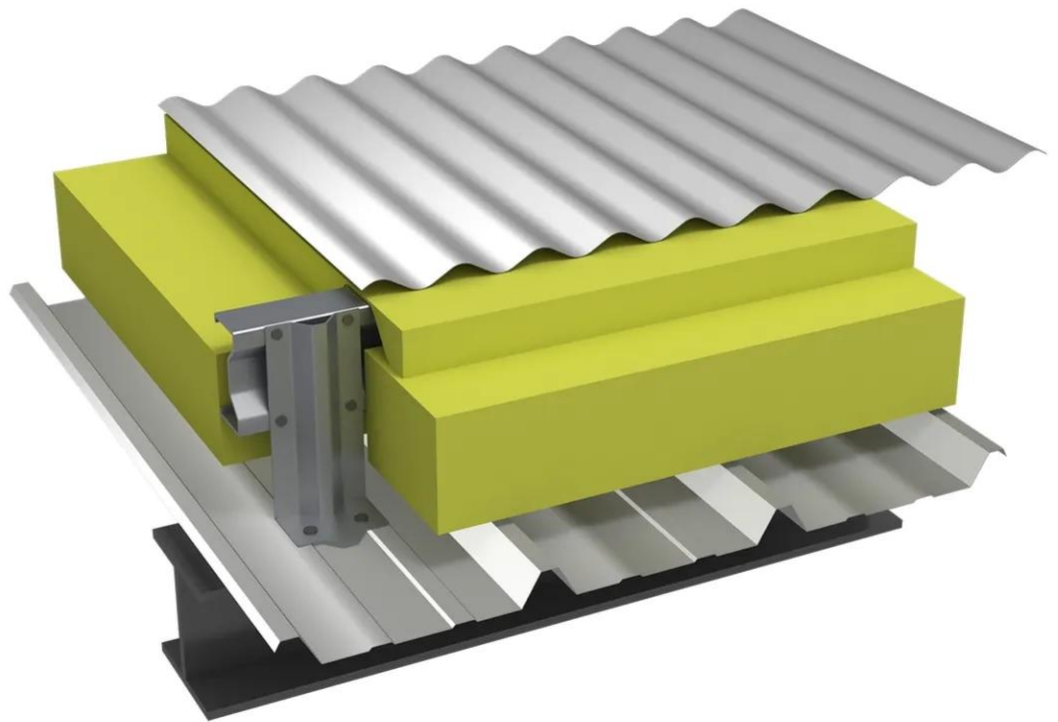
Performances :

- Thermal transmittance Up = 0.25W/m².K

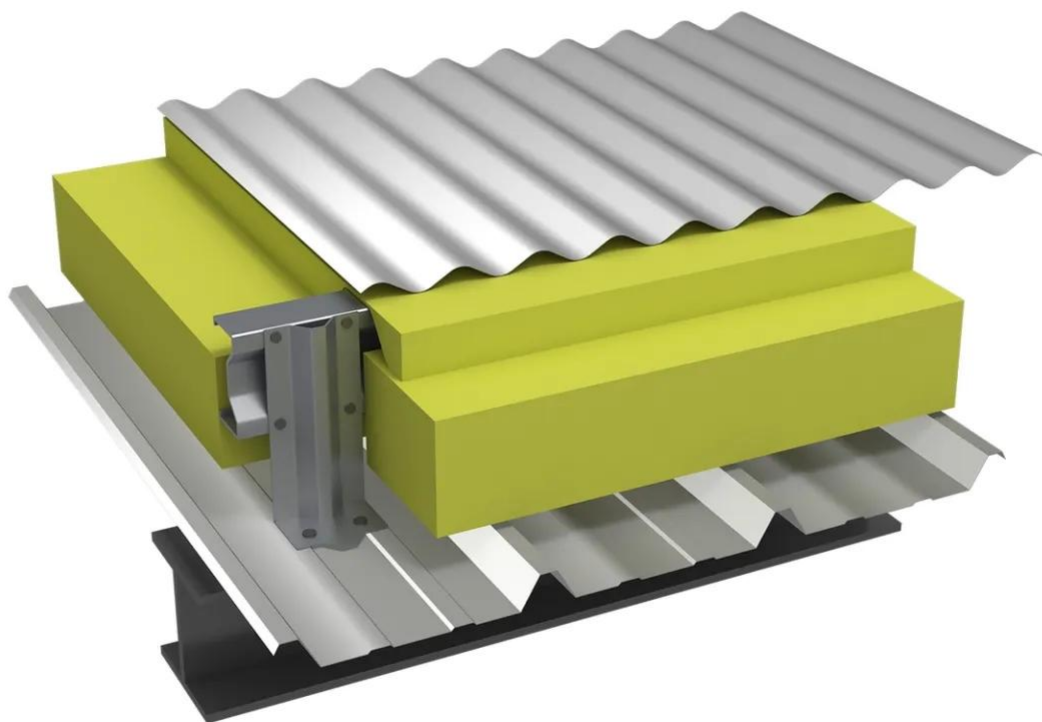
[Contact us](#)



•



•



## Properties

## Accessories

[Request informations](#)

## Related products

[Request informations](#)

## Technical documents

[Request informations](#)

## Technical & commercial documentation

[Request informations](#)