

Globalroof® CIN 338T

CIN 338 T is a double skin system with an inner structural perforated tray and an external steel profile with a minimum thickness of 0.75mm. The system offers good level of sound insulation and good acoustic absorption.

Composition :

- Non load-bearing tray Hacierco C 450.70 perforated P in thickness 0.75mm
- Cleats or steel spacer
- Panolene cladding 50mm thick (Isover) (black glass veil)
- Profile Trapeza with a thickness of 1mm
- Flexible glass wool for cladding covered with reinforced glass veil 100mm thick
- Purlin Multibeam to get 220mm between the profiles
- Additionnal glass wool insulation nipped on the purlin to fill the air gap
- Profile Frequence. Authentique or Trapeza in thickness 0.75mm

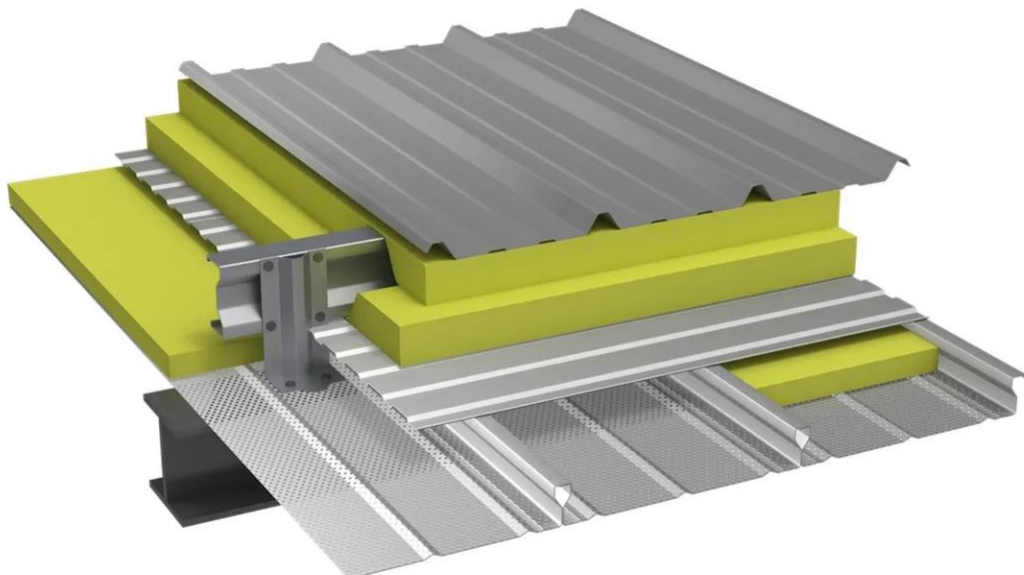
Performances and characteristics :

- Sound reduction index $R_w(C;Ctr) = 48(-2;-8)$ dB
- Acoustic absorption $\alpha_w = 0.85$
- Thermal transmittance $U_p = 0.40W/m^2.K$ estimated
- Weight: $31kg/m^2$
- Spacing: 26cm. not including the height of the external weather profile

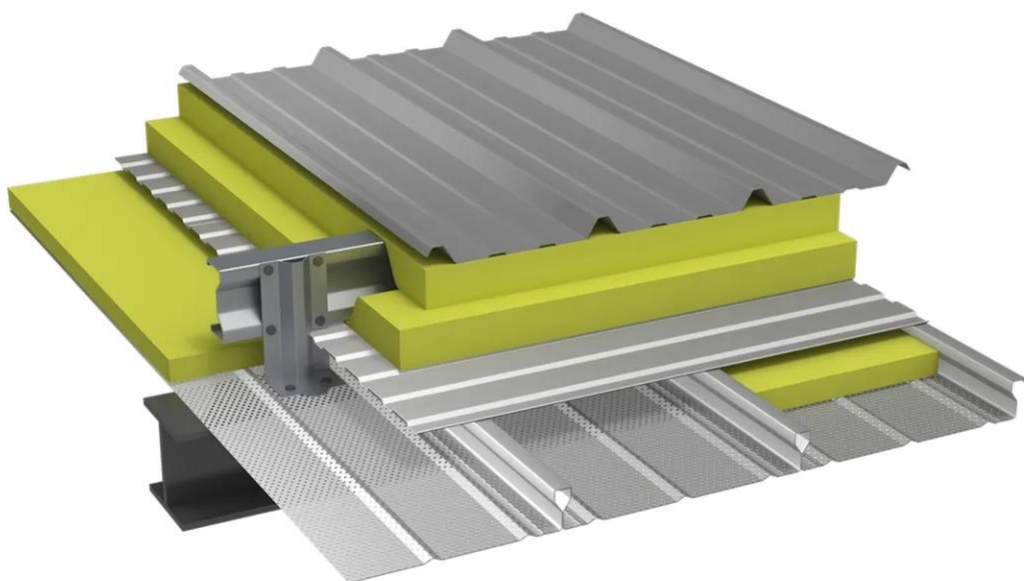
[Contact us](#)



•



•



Properties

Accessories

[Request informations](#)

Related products

[Request informations](#)

Technical documents

[Request informations](#)

Technical & commercial documentation

[Request informations](#)