

Globalroof® CIN 328TP

CIN 328 TP is a double skin system with an inner structural perforated tray and an external steel profile with a very high level of acoustic absorption and sound insulation. Its thermal transmission is Up 15W/m².K.

Composition :

- Non load-bearing Tray Hacierco C 450.70 perforated P in thickness 0.75mm
- Cleats or steel spacer
- Cladipan 32, 110mm thick
- Vapor barrier (Alu foil + glass veil)
- Isofaçade 32, 140mm thick
- Isofaçade 32, 80mm thick
- Purlin Multibeam
- Additionnal glass wool insulation clamped on purlin to fill the air gap
- Profile Frequence. Authentique or Trapeza in
- thickness 0.75mm

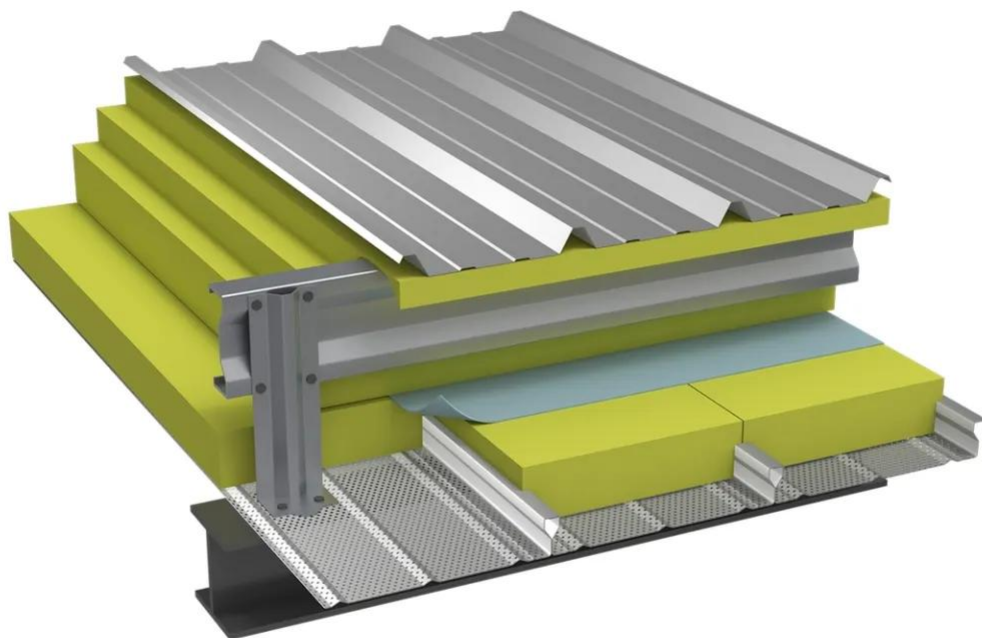
Performances and characteristics :

- Sound reduction index $R_w(C;Ctr) = 47(-5;-13)$ dB
- Acoustic absorption $\alpha_w = 1.00$
- Thermal transmittance $U_p = 0.15\text{W/m}^2\cdot\text{K}$ estimated
- Weight: 30kg/m²
- Spacing: 33cm. not including the height of the external weather profile

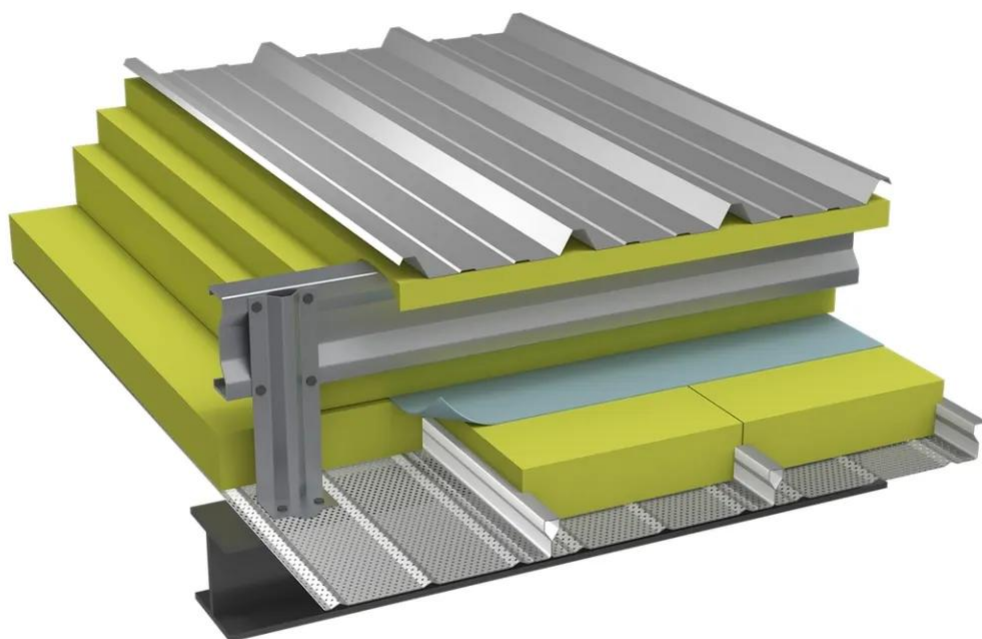
[Contact us](#)



-



-



Properties

Accessories

[Request informations](#)

Related products

[Request informations](#)

Technical documents

[Request informations](#)

Technical & commercial documentation

[Request informations](#)