

Globalroof® CIN 329TP

CIN 329 TP is a double skin system with an inner structural perforated tray and an external steel profile with a minimum tickness of 0.75mm. The system provides a very high level of sound insulation and exceptional acoustic absorption. The system has an estimated thermal performance Up of 0.15W/m².K.

Composition :

- Non load-bearing tray Hacierco C 450.70 perforated P in thickness 0.75mm
- Cleats or steel spacer
- Cladipan 32, 110mm thick
- Vapor barrier (Alu foil + glass veil)
- Isofaçade 32, 140mm thick
- Isofaçade 32, 80mm thick
- Purlin Multibeam
- Additionnal glass wool insulation nipped on the purlin to fill the air gap
- Profil Trapeza in thickness 1.25mm

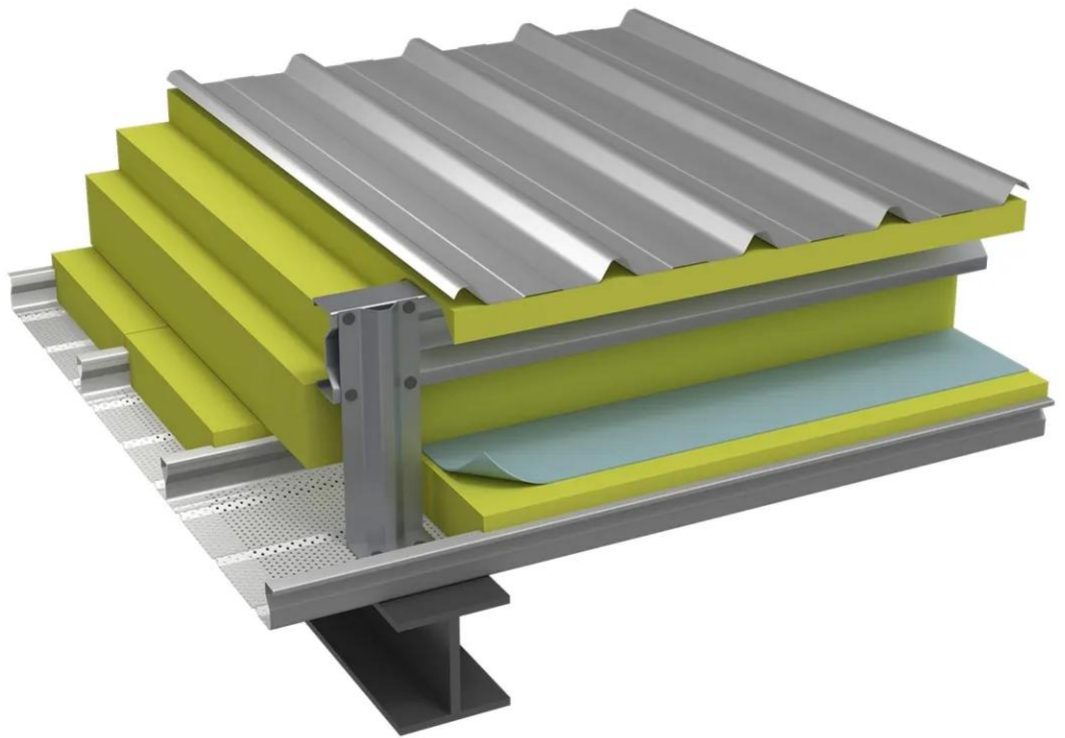
Performances and characteristics :

- Sound reduction index $R_w(C;Ctr) = 51(-5;-13)$ dB
- Acoustic absorption $\alpha_w = 1.00$
- Thermal transmittance $U_p = 0.15W/m^2.K$ estimated
- Weight: 35kg/m²
- Spacing: 33cm .not including the height of the external weather profile

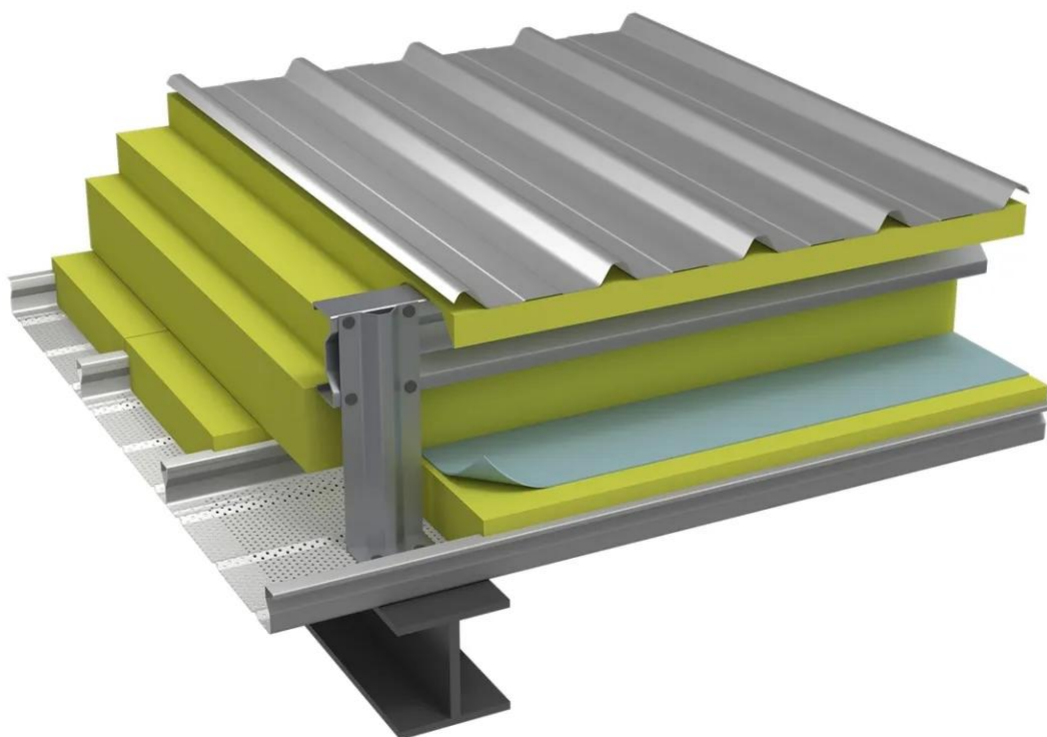
[Contact us](#)



•



•



Properties

Accessories

[Request informations](#)

Related products

[Request informations](#)

Technical documents

[Request informations](#)

Technical & commercial documentation

[Request informations](#)