

## Trapeza® 7.96.54T

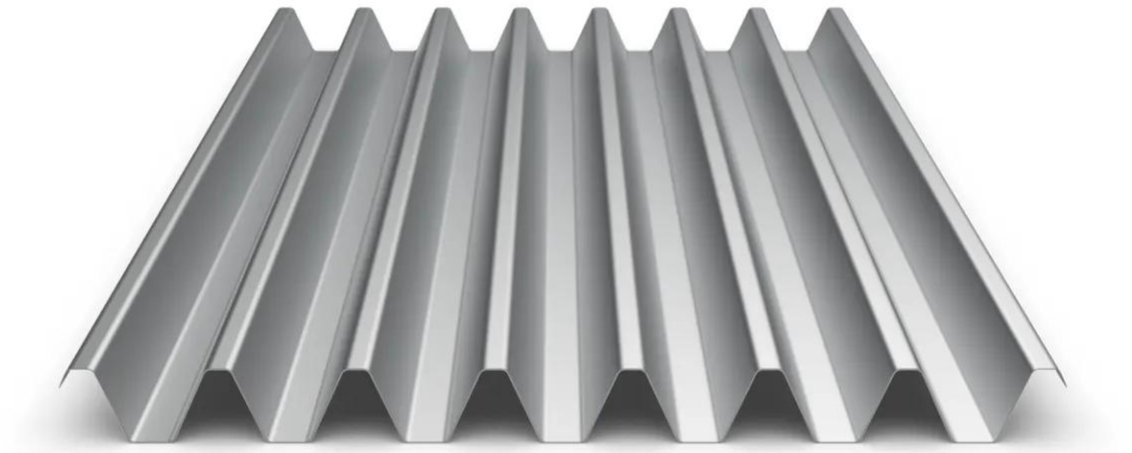
This trapezoidal roofing profile has a cover width of 672 mm and sets itself apart through its narrow and deep waves.

- Atypical and rythmical design
- Unique thickness 0.75 mm
- Maximum length 12 000 mm
- Available with Haircotherm 150 condensation regulator
- Minimal slope of 10 %
- Realizable in Touch Gloss & Touch 2B stainless steel in thickness 0.80 mm and lengths from 2 m to 6.50 m

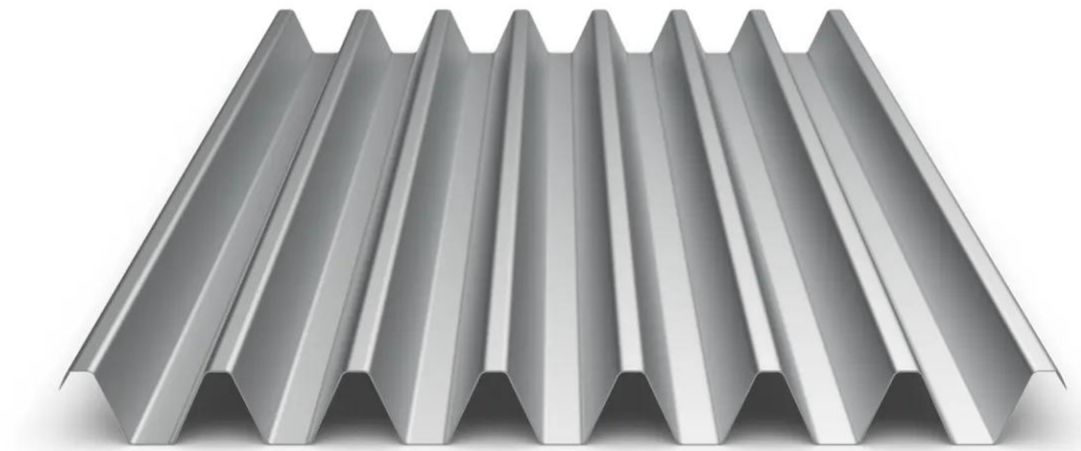
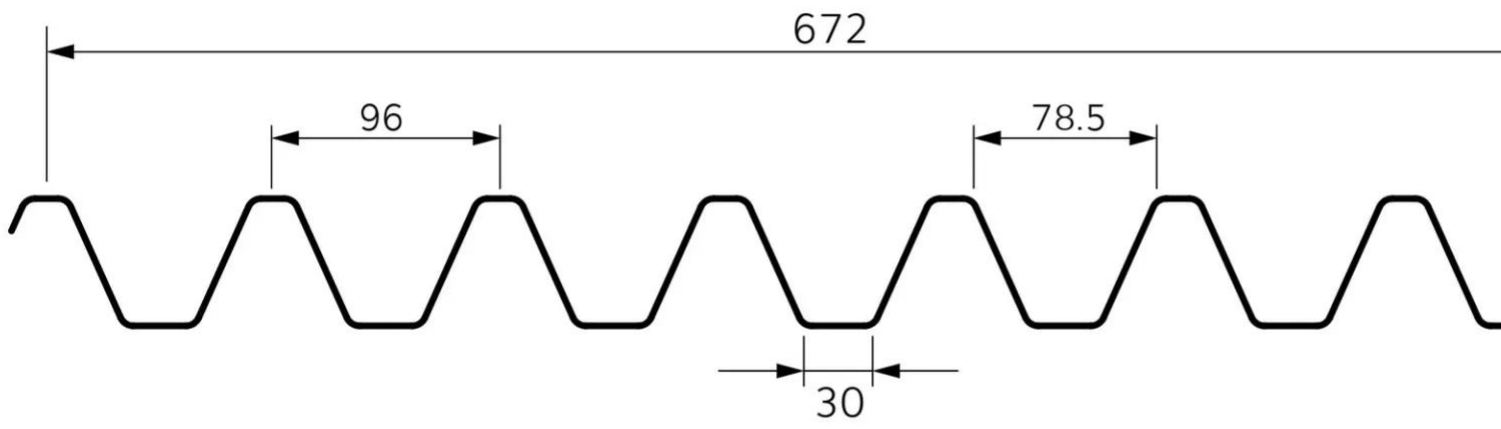
[Contact us](#)

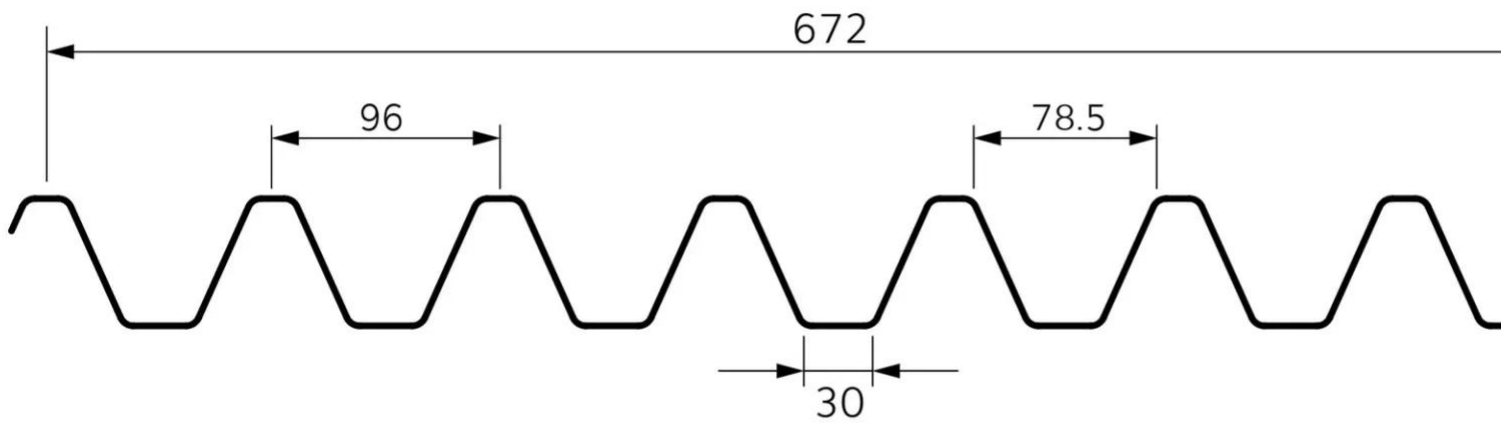


•



•





## Properties

## Accessories

[Request informations](#)

## Related products

[Request informations](#)

## Technical documents

[Request informations](#)

## Technical & commercial documentation

[Request informations](#)