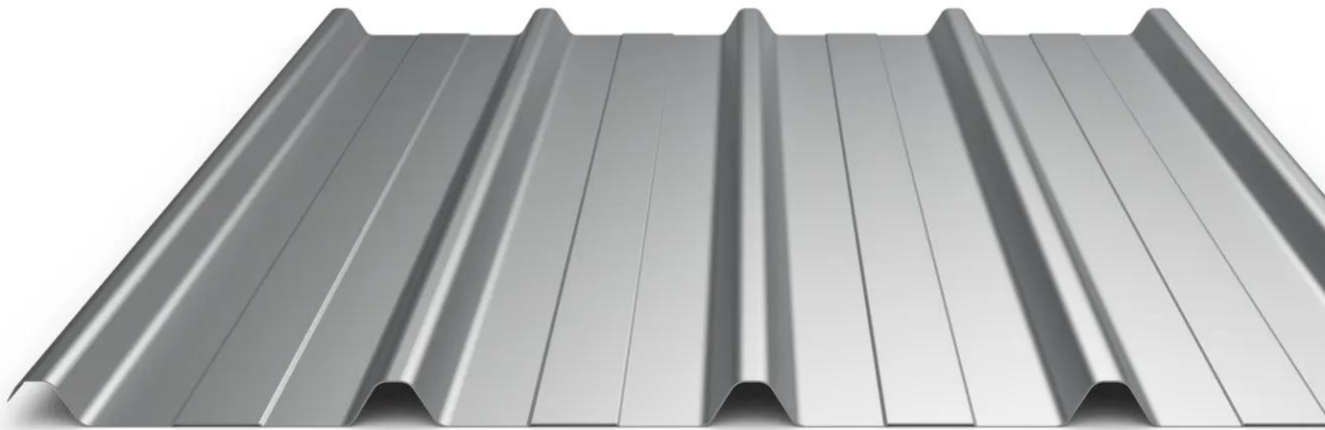


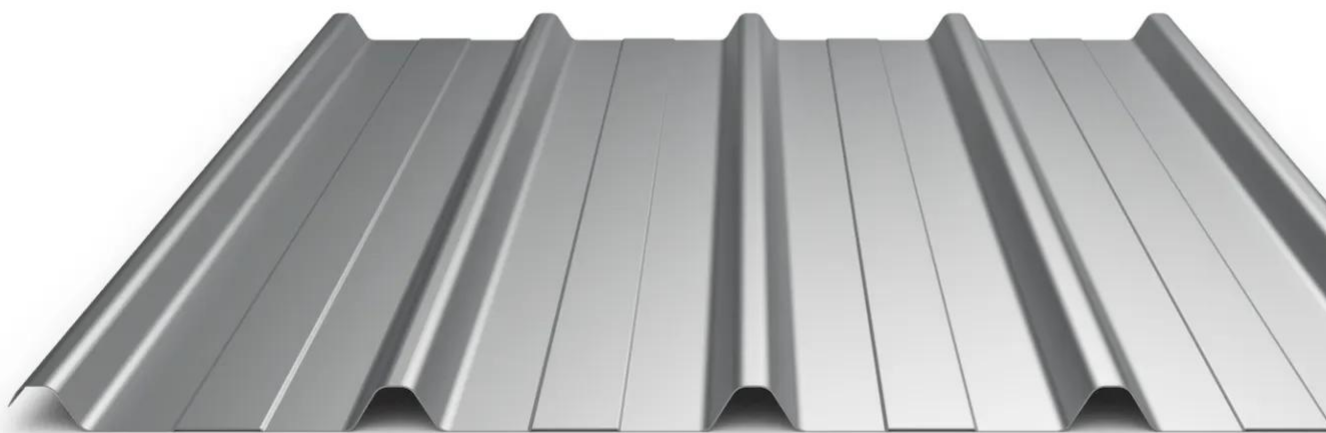
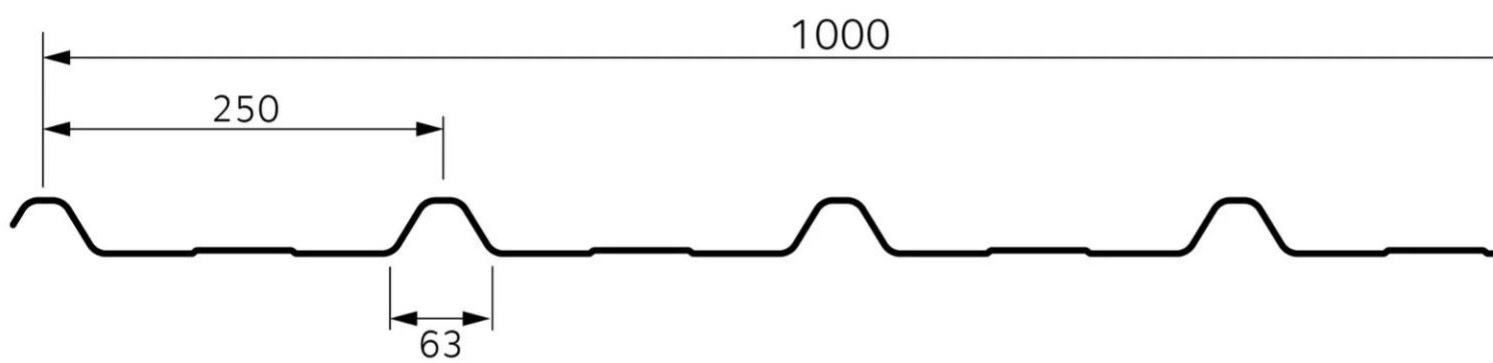
Authentique 4.250.35T

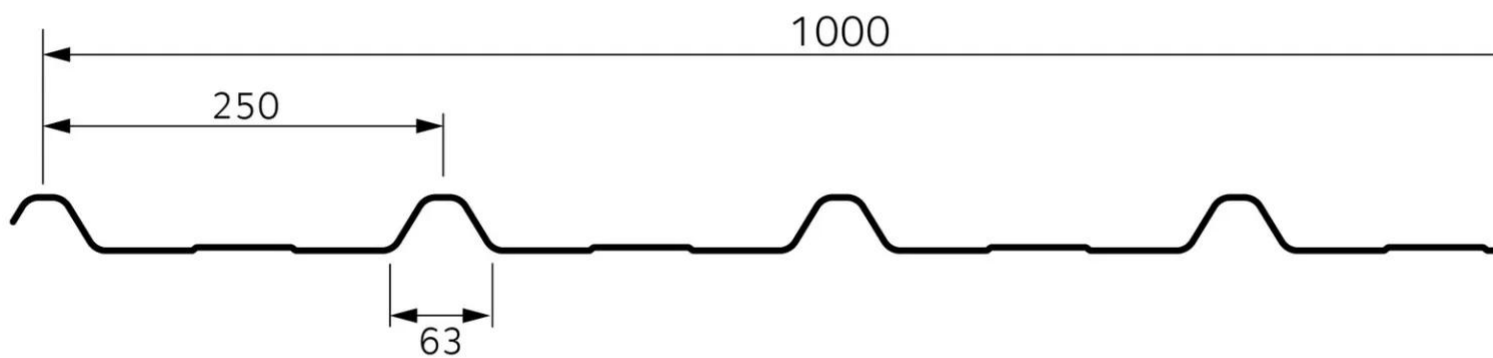
Trapeza 4.250.35T is a steel prepainted roof cladding profile with a trapezoidal shape and a height of 35mm.

- Width: 1,000 mm
- Minimum length: 1 800 mm / maximum length: 12 800 mm, for lengths less than 1 800 mm, please contact us
- Available in solution with condensation regulator
- Notched bending in option
- Suitable for high loads

[Contact us](#)







Properties

Accessories

[Request informations](#)

Related products

[Request informations](#)

Technical documents

[Request informations](#)

Technical & commercial documentation

[Request informations](#)